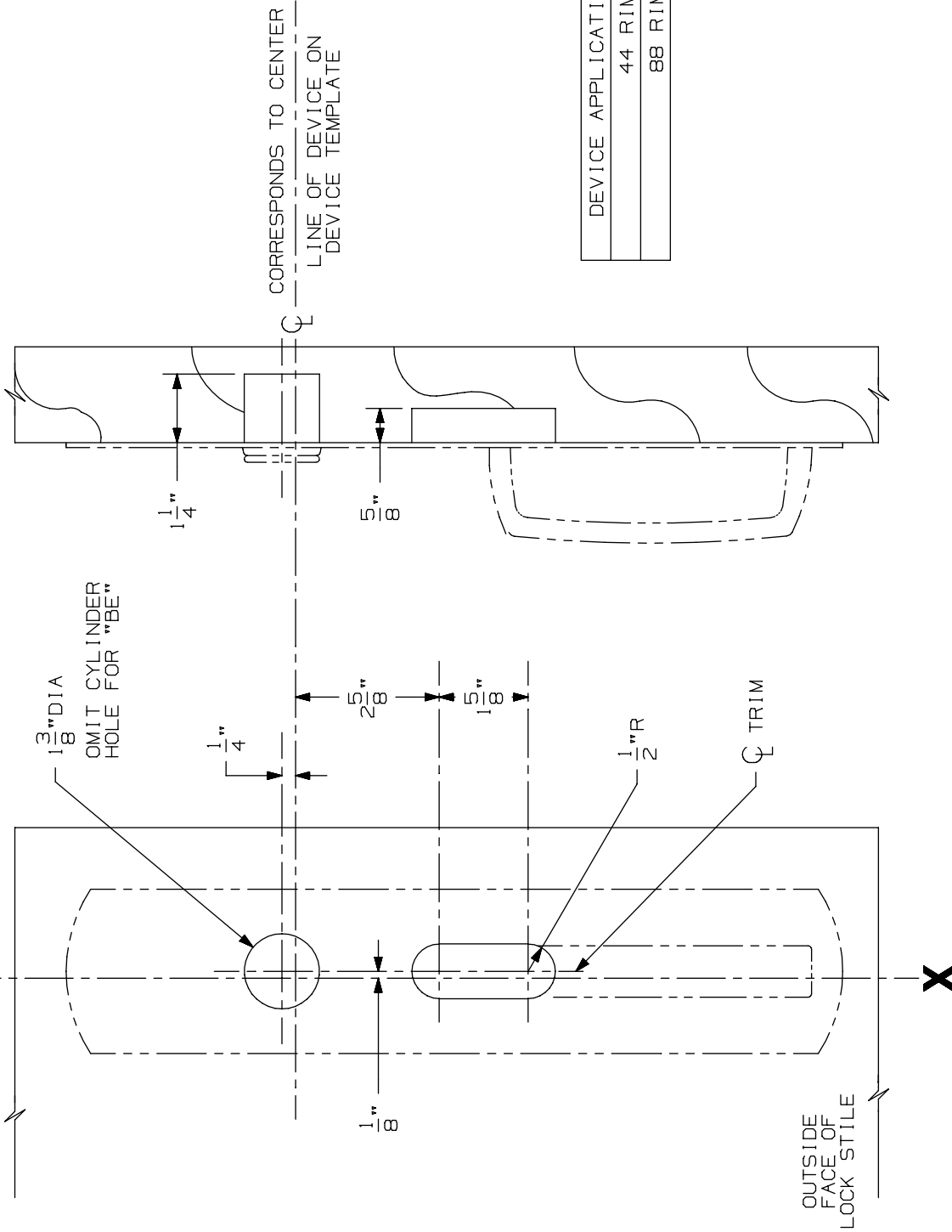


LINE X-X CORRESPONDS TO  
LINE X-X ON DEVICE TEMPLATE



DEVICE APPLICATION SCHEDULE
44 RIM
88 RIM

LHR SHOWN  
RHR OPPOSITE

FOR CUTOUTS ON INSIDE FACE OF DOOR  
SEE DEVICE TEMPLATE.

NOTE: MOUNTING HOLES TO BE PREPARED  
AT INSTALLATION ON DOOR.

880TP & TP-BE Trim (Wood Door)

**VON DUPRIN**®

NOTES: SEE MASTER SHEET #10001 FOR SUGGESTED REINFORCING

TEMPLATE NUMBER:

W20253\_a

DATE:  
05-29-13