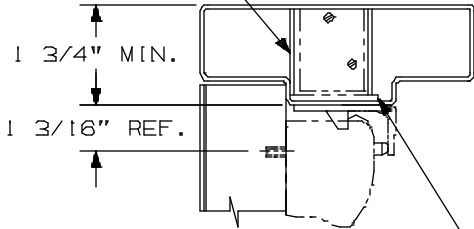


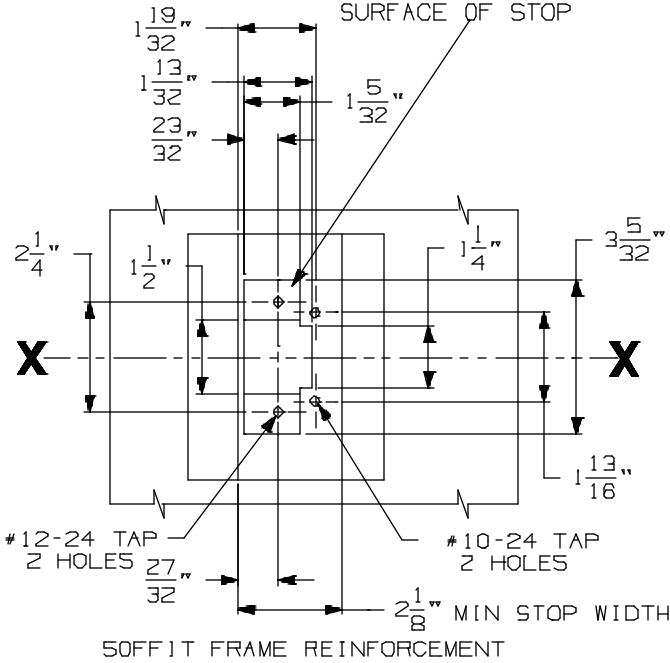
DEVICE INSTALLATION SCHEDULE	
VERT. ROD & MORT. DEVICE	2 3/4"
TWO VERT. ROD DEVICES	2 3/4"
SINGLE DOOR	2 3/4"
WHEN SURFACE APPLIED COORDINATOR IS USED, BACKSET OF VERTICAL ROD DEVICE MUST BE	2 3/4"

NOTE: MORTAR GUARD SHOULD BE PROVIDED TO PROTECT SOFFIT LATCH BOLT ASSEMBLY



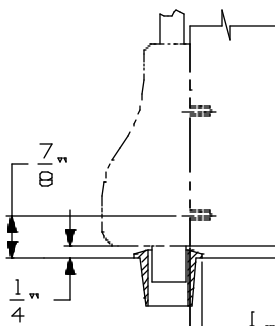
LHR SHOWN
RHR OPPOSITE

REINFORCING REQUIRED FOR SOFFIT LATCH MUST BE RECESSED 1/8" FROM TOP SURFACE OF STOP



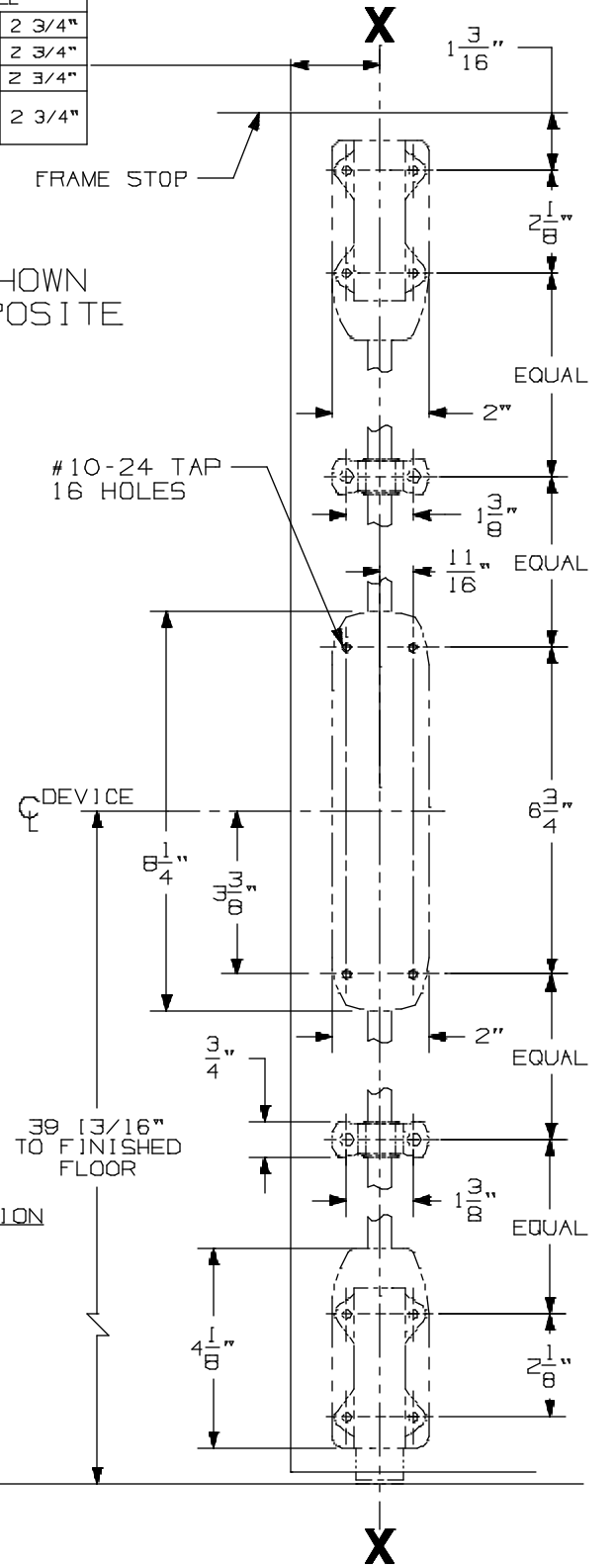
SOFFIT FRAME REINFORCEMENT

304L STRIKE APPLICATION



CROSSBAR 36 13/16" FROM FINISHED FLOOR

FOR OUTSIDE TRIM PREPARATION, WHEN REQUIRED, SEE ADDITIONAL TRIM TEMPLATE.



INSIDE FACE OF LOCK STILE
LHR DOOR

8827-F & 8827TL-F Surface Applied Device

VON DUPRIN®

NOTES: SEE MASTER SHEET #10001 FOR SUGGESTED REINFORCING

TEMPLATE NUMBER:

10164_a

DATE:
05-15-13