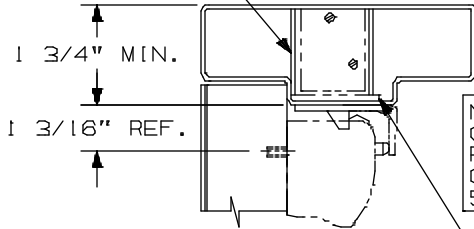


DEVICE INSTALLATION SCHEDULE	
VERT. ROD & MORT. DEVICE	2 3/4"
TWO VERT. ROD DEVICES	2 3/4"
SINGLE DOOR	2 3/4"
WHEN SURFACE APPLIED COORDINATOR IS USED, BACKSET OF VERTICAL ROD DEVICE MUST BE	

NOTE: MORTAR GUARD SHOULD BE PROVIDED TO PROTECT SOFFIT LATCH BOLT ASSEMBLY

LHR SHOWN  
RHR OPPOSITE

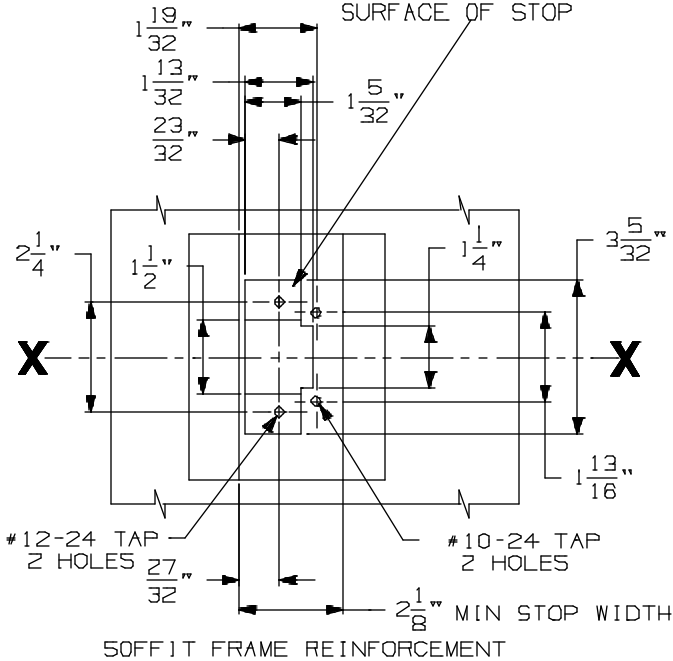


NOTE: OMIT CYLINDER PREPARATION IF CONTROL IS SPECIFIED

REINFORCING REQUIRED FOR SOFFIT LATCH MUST BE RECESSED 1/8" FROM TOP SURFACE OF STOP

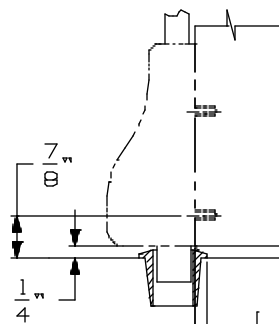
#10-24 TAP  
16 HOLES

CYLINDER SCHEDULE	HOLE SIZE
SCHLAGE	8
CORBIN	
RUSSWIN	1 5/16"
LOCKWOOD	
YALE	
SARGENT	1 3/8"



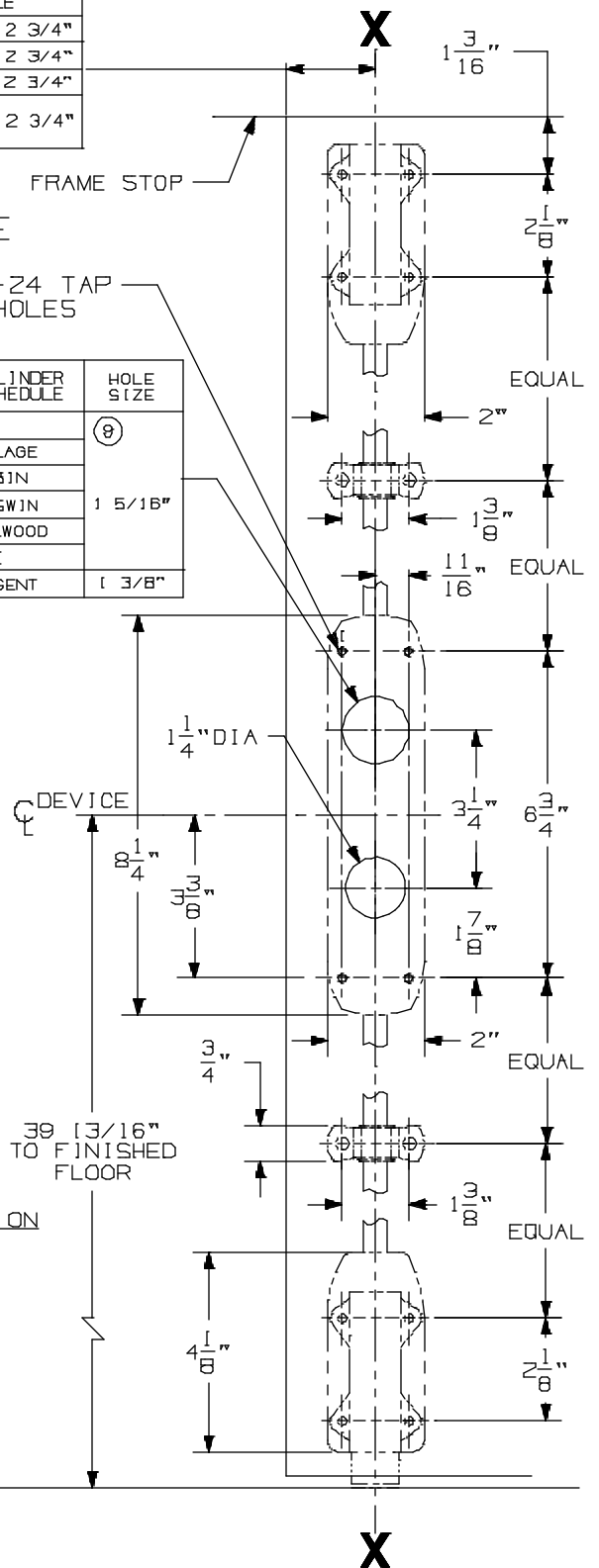
SOFFIT FRAME REINFORCEMENT

304L STRIKE APPLICATION



CROSSBAR 36 13/16" FROM FINISHED FLOOR

FOR OUTSIDE TRIM PREPARATION, SEE ADDITIONAL TRIM TEMPLATE.



39 13/16" TO FINISHED FLOOR

INSIDE FACE OF LOCK STILE  
LHR DOOR

# 8827K/L-F Surface Applied Device



NOTES: SEE MASTER SHEET #10001 FOR SUGGESTED REINFORCING

TEMPLATE NUMBER:

10166\_a

DATE:  
05-15-13