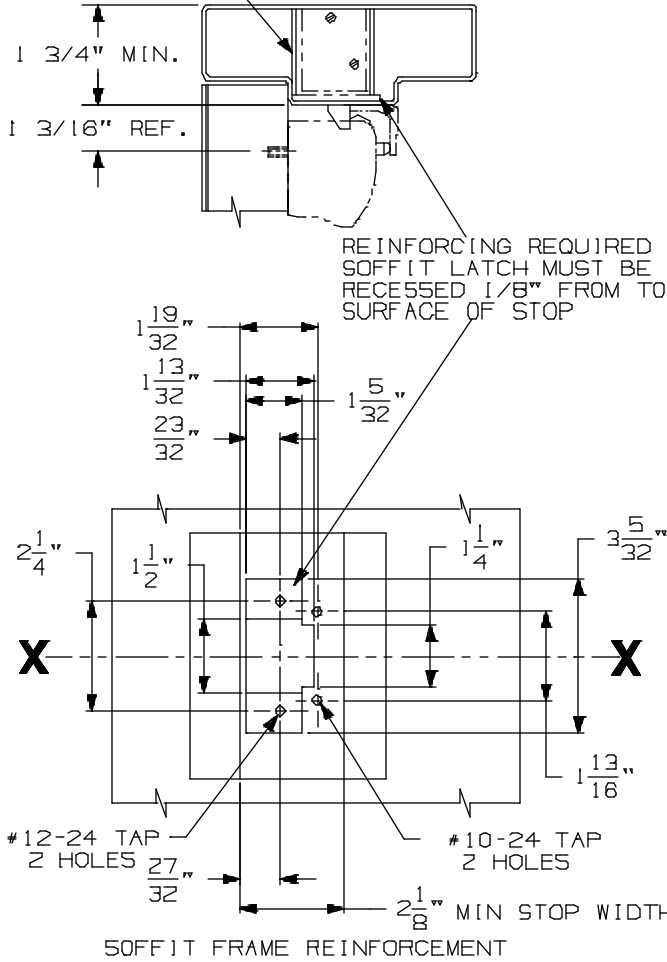


DEVICE INSTALLATION SCHEDULE	
VERT. ROD & MORT. DEVICE	2 3/4"
TWO VERT. ROD DEVICES	2 3/4"
SINGLE DOOR	2 3/4"
WHEN SURFACE APPLIED COORDINATOR IS USED, BACKSET OF VERTICAL ROD DEVICE MUST BE	

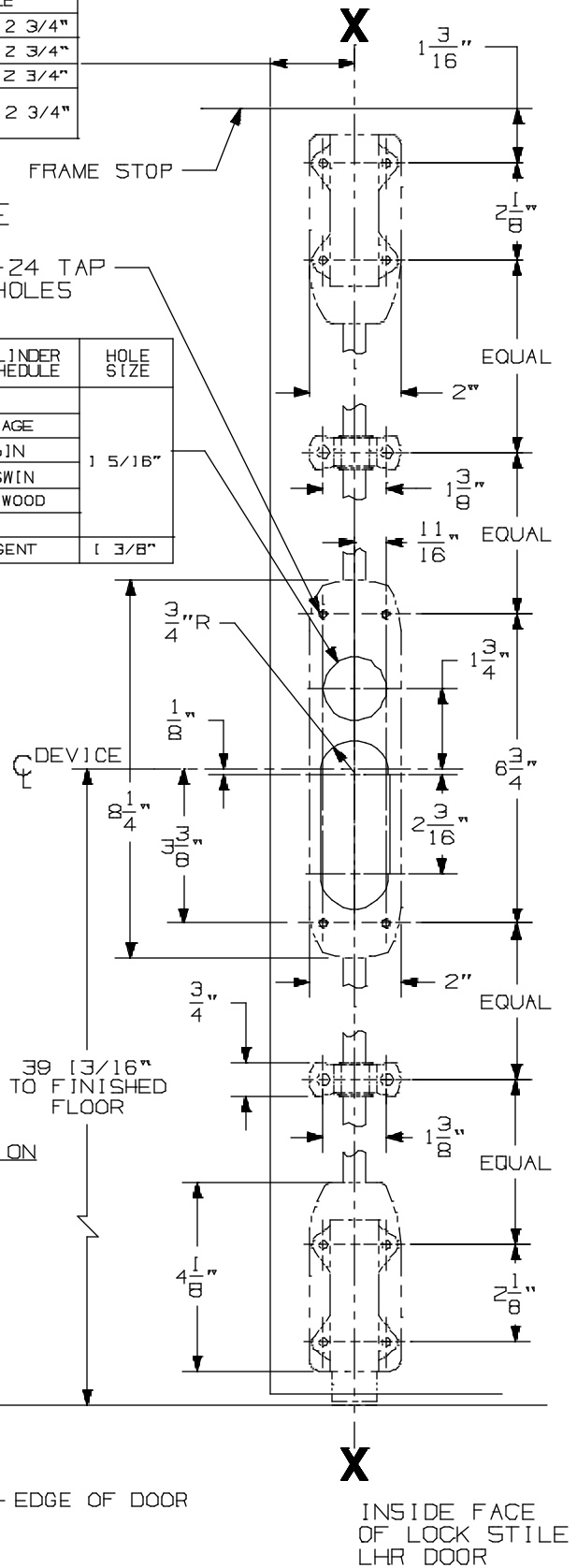
NOTE: MORTAR GUARD SHOULD BE PROVIDED TO PROTECT SOFFIT LATCH BOLT ASSEMBLY

LHR SHOWN
RHR OPPOSITE



#10-24 TAP
16 HOLES

CYLINDER SCHEDULE	HOLE SIZE
SCHLAGE	1 5/16"
CORBIN	
RUSSWIN	
LOCKWOOD	
YALE	1 3/8"
SARGENT	



304L STRIKE APPLICATION

CROSSBAR 36 13/16" FROM FINISHED FLOOR

FOR OUTSIDE TRIM PREPARATION,
SEE ADDITIONAL TRIM TEMPLATE.

8827TP-F Surface Applied Device

VON DUPRIN®

NOTES: SEE MASTER SHEET #10001 FOR SUGGESTED REINFORCING

TEMPLATE NUMBER:

10165_a

DATE:
05-15-13