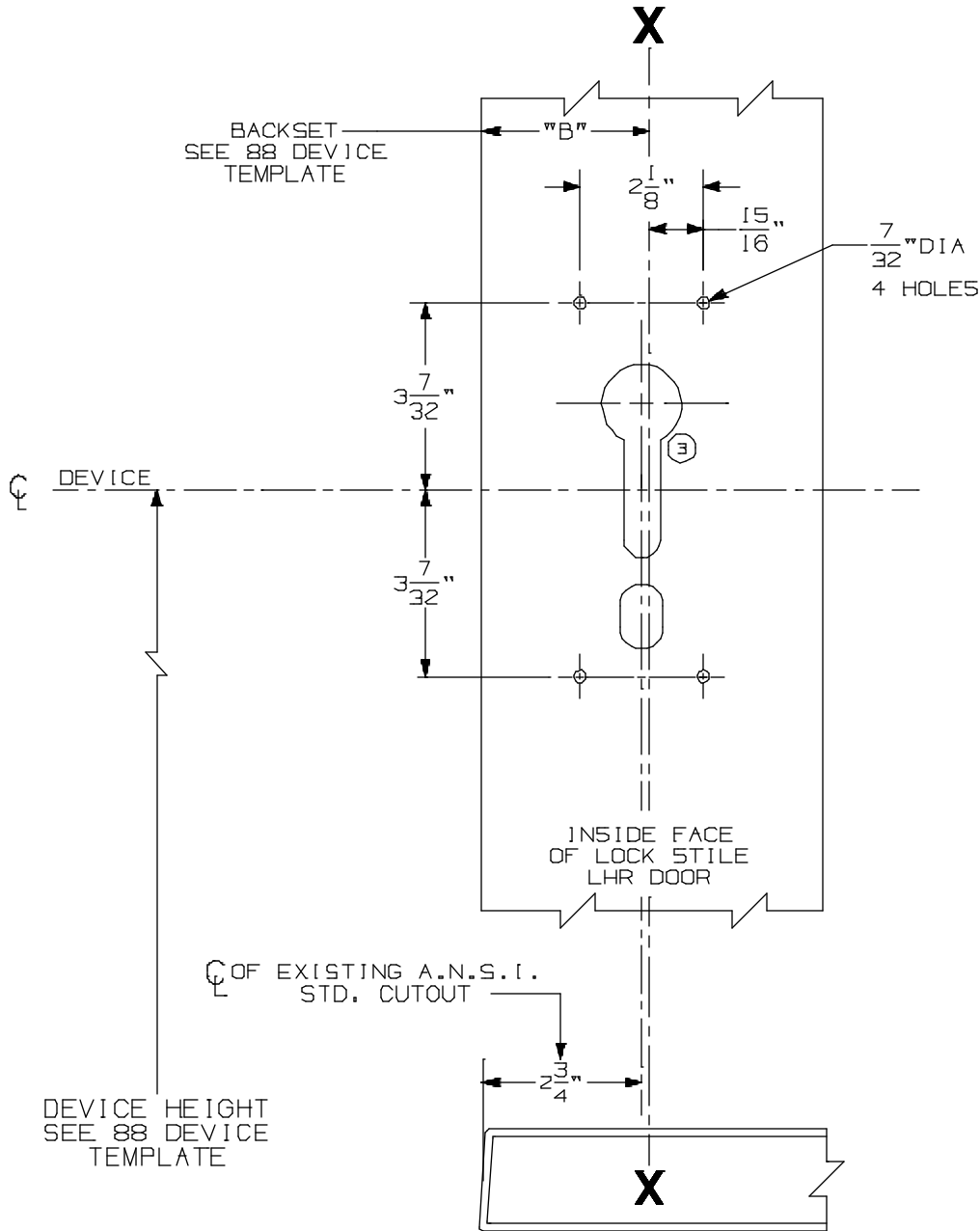


FOR ADDITIONAL INFORMATION SEE TEMPLATE NO. 10155 OR 10169
 NOTE: TYPE 86 STOCK HOLLOW METAL APPLICATIONS FOR 88
 DEVICES WILL WORK WITH ALL STANDARD STRIKE APPLICATIONS,
 SEE CORRESPONDING 88 DEVICE TEMPLATE FOR CORRECT BACKSET
 AND DEVICE HEIGHT.

TYPE 86 STOCK HOLLOW
 METAL DOOR



SEE A.N.S.I. SPECIFICATION NO. A115 FOR THE SIZE
 AND LOCATION OF STOCK CUTOUTS.

FOR OUTSIDE TRIM PREPARATION,
 SEE ADDITIONAL TRIM TEMPLATE.

LHR SHOWN
 RHR OPPOSITE

88EO & DT Rim Devices w/880 Trim for Type
 "86" Stock Hollow Metal Applications

VON DUPRIN®

NOTES: SEE MASTER SHEET #10001 FOR SUGGESTED REINFORCING

TEMPLATE
 NUMBER:

10202_a

DATE:
 05-16-13