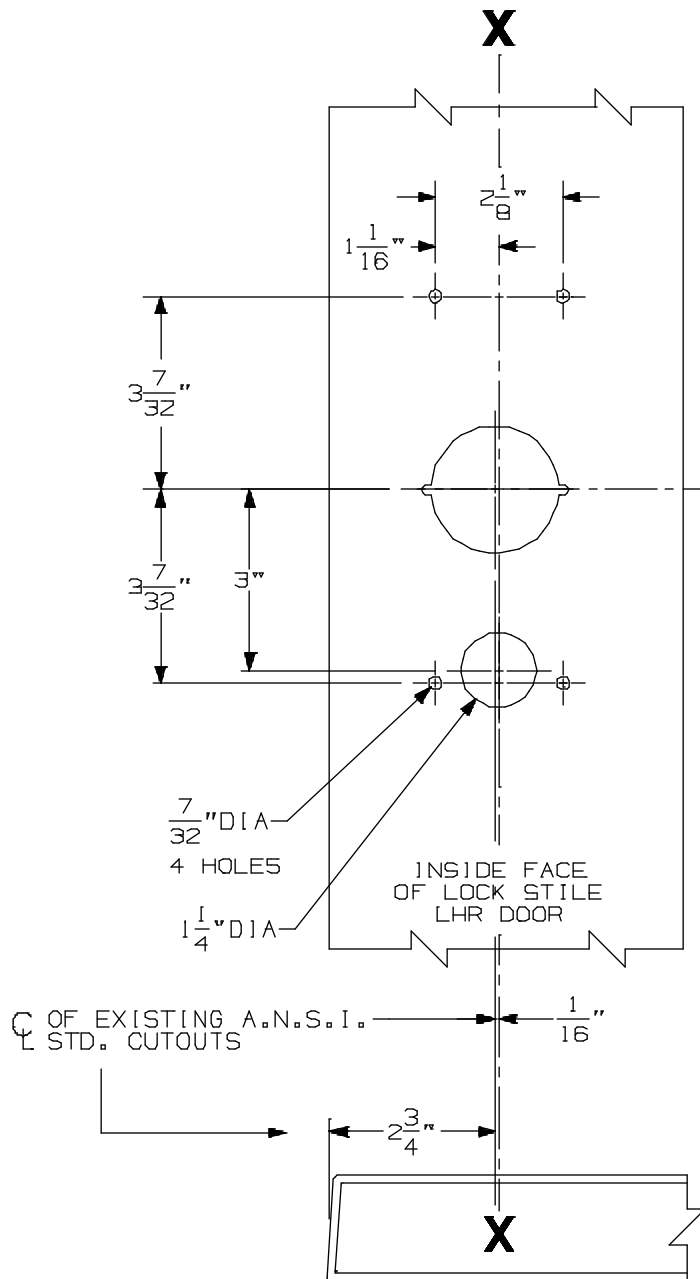


FOR ADDITIONAL INFORMATION SEE TEMPLATE NO. 10158 OR NO. 10172

NOTE: TYPE 161 STOCK HOLLOW METAL APPLICATIONS FOR 88
DEVICES WILL WORK ONLY ON THESE APPLICATIONS:
SINGLE DOOR & 299, 299F OR 268 STRIKE. ⑥

TYPE 161 STOCK HOLLOW METAL DOOR



NOTE: ALL BACKSET DIMENSIONS
FOR 5/8" STOP. USE STRIKE
SHIMS SUPPLIED FOR 1/2" STOP

DEVICE &
A.N.S.I.
CUTOUTS

SINGLE DOOR OPENING
40 5/16" TO FINISHED FLOOR

DOUBLE DOOR OPENING
WITH VONDUPRIN MULLION
40 5/16" ⑥

VON DUPRIN CUTOUTS ARE LOCATED
FROM A.N.S.I. CUTOUTS SEE A.N.S.I.
SPECIFICATION NO. A115 FOR THE SIZE
AND LOCATION OF THESE CUTOUTS.

FOR OUTSIDE TRIM PREPARATION,
SEE ADDITIONAL TRIM TEMPLATE.

LHR SHOWN
RHR OPPOSITE

88K Rim Devices w/ 880 Trim for Type "161"
Stock Hollow Metal Applications

VON DUPRIN®

NOTES: SEE MASTER SHEET #10001 FOR SUGGESTED REINFORCING

TEMPLATE
NUMBER:

10197_a

DATE:
05-16-13