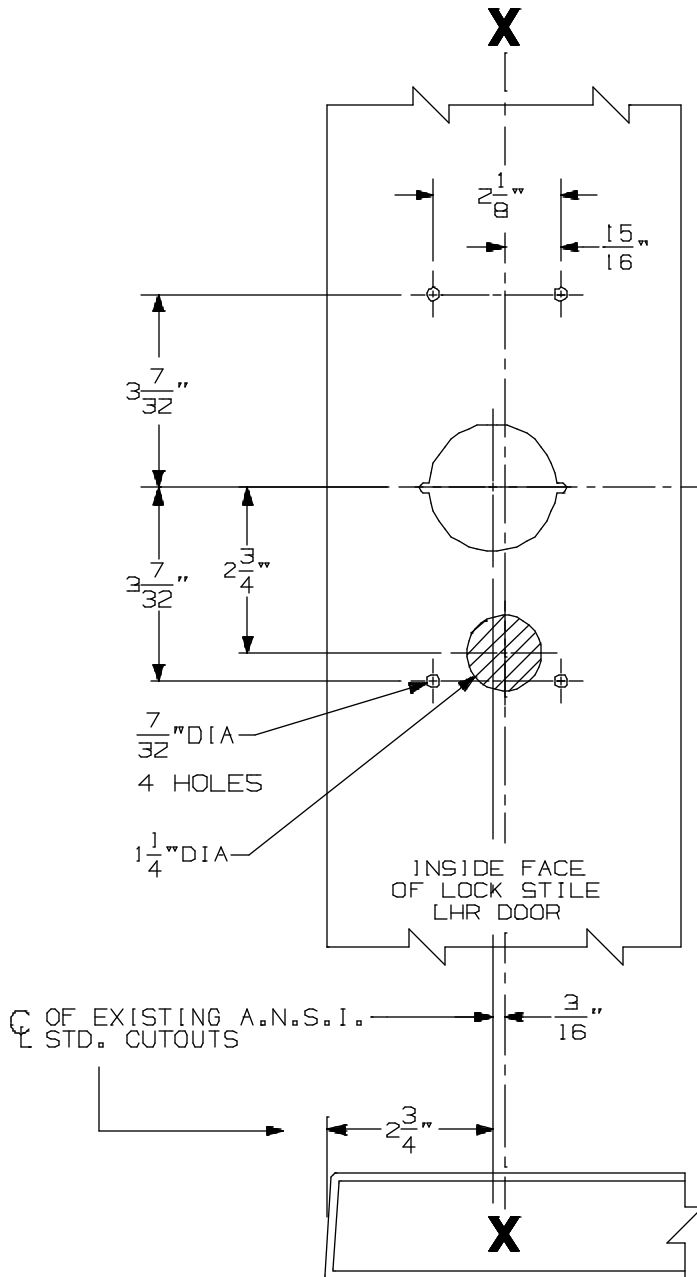


FOR ADDITIONAL INFORMATION SEE TEMPLATE NO. 10157 OR NO. 10171

NOTE: TYPE 161 STOCK HOLLOW METAL APPLICATIONS FOR 88  
DEVICES WILL WORK ONLY ON THESE APPLICATIONS:  
SINGLE DOOR & 299, 299F OR 268 STRIKE.

⑤

## TYPE 161 STOCK HOLLOW METAL DOOR



NOTE: ALL BACKSET DIMENSIONS  
FOR  $\frac{5}{8}"$  STOP. USE STRIKE  
SHIMS SUPPLIED FOR  $\frac{1}{2}"$  STOP

SINGLE DOOR OPENING  
 $40\frac{5}{16}"$  TO FINISHED FLOOR

DOUBLE DOOR OPENING  
WITH VON DUPRIN MULLION  
 $40\frac{5}{16}"$

⑤

VON DUPRIN CUTOUTS ARE LOCATED  
FROM A.N.S.I. CUTOUTS SEE A.N.S.I.  
SPECIFICATION NO. A115 FOR THE SIZE  
AND LOCATION OF THESE CUTOUTS.

FOR OUTSIDE TRIM PREPARATION,  
SEE ADDITIONAL TRIM TEMPLATE.

LHR SHOWN  
RHR OPPOSITE

88TP Rim Devices with 880 Trim for Type "86"  
Stock Hollow Metal Applications

**VON DUPRIN®**

NOTES: SEE MASTER SHEET #10001 FOR SUGGESTED REINFORCING

TEMPLATE  
NUMBER:

10196\_a

DATE:  
05-16-13