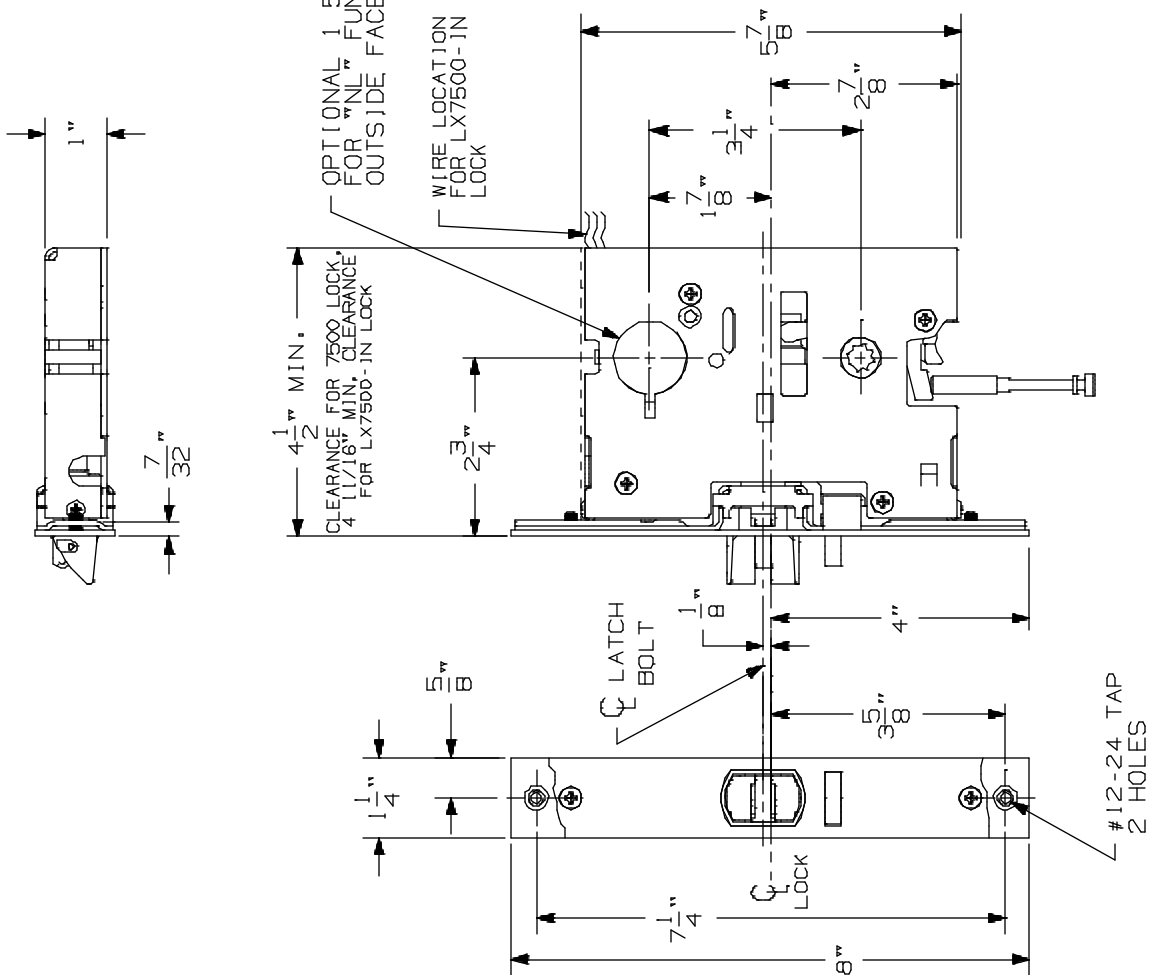


- NOTES:
1. WIRING TO LX LOCK GOES THROUGH DOOR NOT DEVICE.
 2. FOR OUTSIDE TRIM PREPERATION, WHEN REQUIRED, SEE TRIM TEMPLATE.
 3. SEE TEMPLATE #10372 AND #10374 FOR DEVICE PREP.



LHR APPLICATION SHOWN,
RHR APPLICATION OPPOSITE

9475/9575 & 9475-F/9575-F Series
Mortise Lock Devices

VON DUPRIN®

NOTES: SEE MASTER SHEET #10001 FOR SUGGESTED REINFORCING

TEMPLATE
NUMBER:

10373_a

DATE:
05-22-13