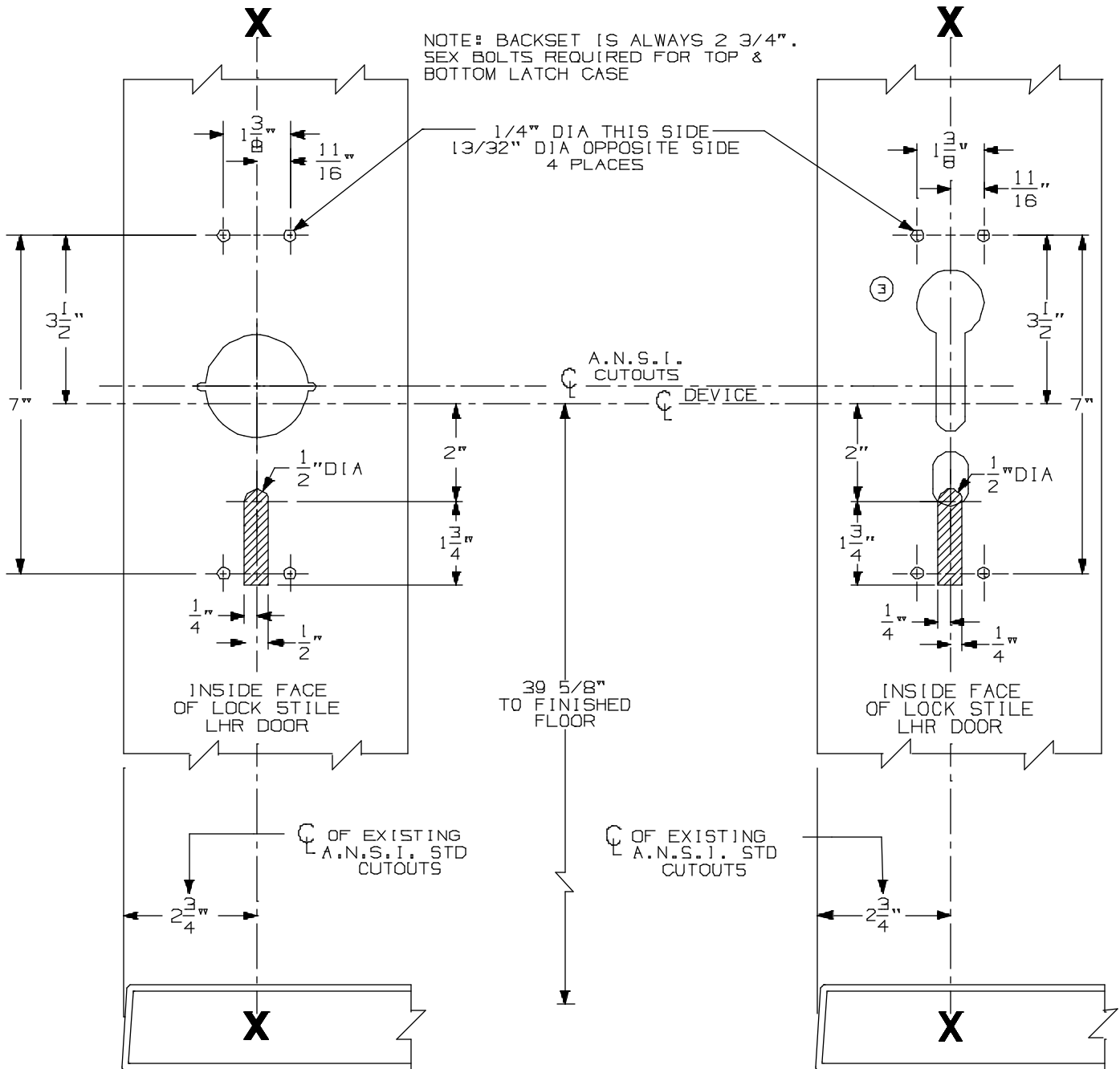


FOR ADDITIONAL INFORMATION SEE TEMPLATE NO. 10304

TYPE 161 STOCK HOLLOW METAL DOOR

TYPE 86 STOCK HOLLOW METAL DOOR



NOTE: BACKSET IS ALWAYS $2\frac{3}{4}''$.
SEX BOLTS REQUIRED FOR TOP & BOTTOM LATCH CASE

A.N.S.I. CUTOUTS ARE SHOWN FOR REFERENCE ONLY.
SEE A.N.S.I. SPECIFICATION NO. A115 FOR THE
SIZE AND LOCATION OF THESE CUTOUTS.

FOR OUTSIDE TRIM PREPARATION,
SEE ADDITIONAL TRIM TEMPLATE.

LHR SHOWN
RHR OPPOSITE

9827/9927 TP, K, & L Vertical Rod Devices w/ 990,
991, & 992 Trim for Stock Hollow Metal Applications

VON DUPRIN

NOTES: SEE MASTER SHEET #10001 FOR SUGGESTED REINFORCING

TEMPLATE
NUMBER:

10311_a

DATE:
05-21-13