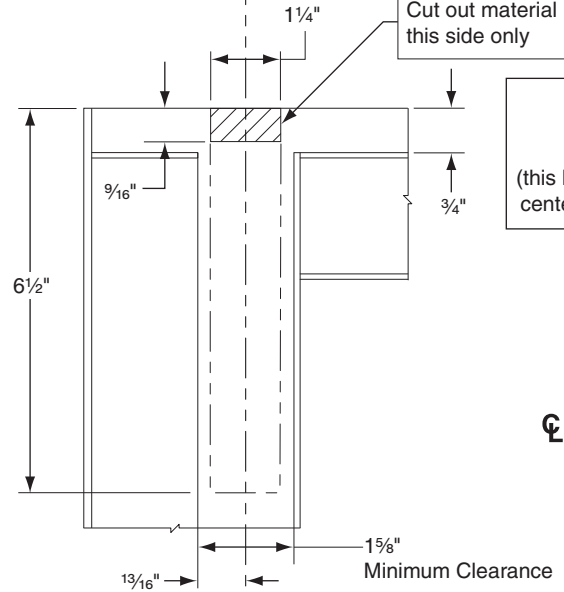


<b>990 Trim or Sex Bolt (see note 1) Application</b>
1/4" Dia. this side
13/32" Dia. opposite side
4 places

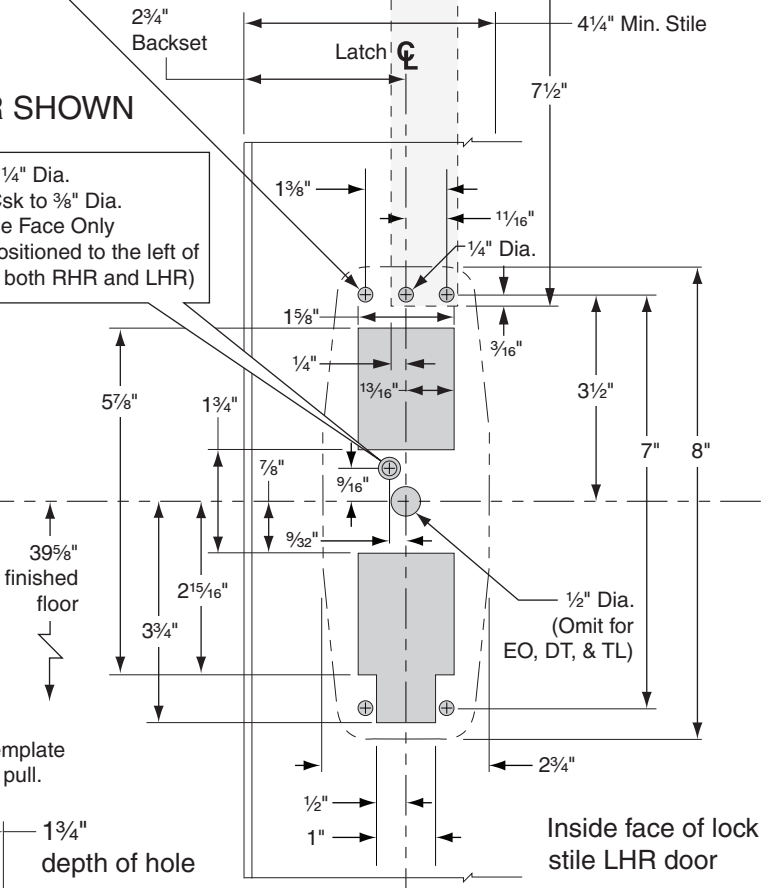
<b>Surface Application</b>
#25 Drill
#10-24 Tap
4 places

Note 1: These 4 holes to be prepared for surface application (#10-24 tap) when using 696/697 trim. Do not prepare for sex bolts.

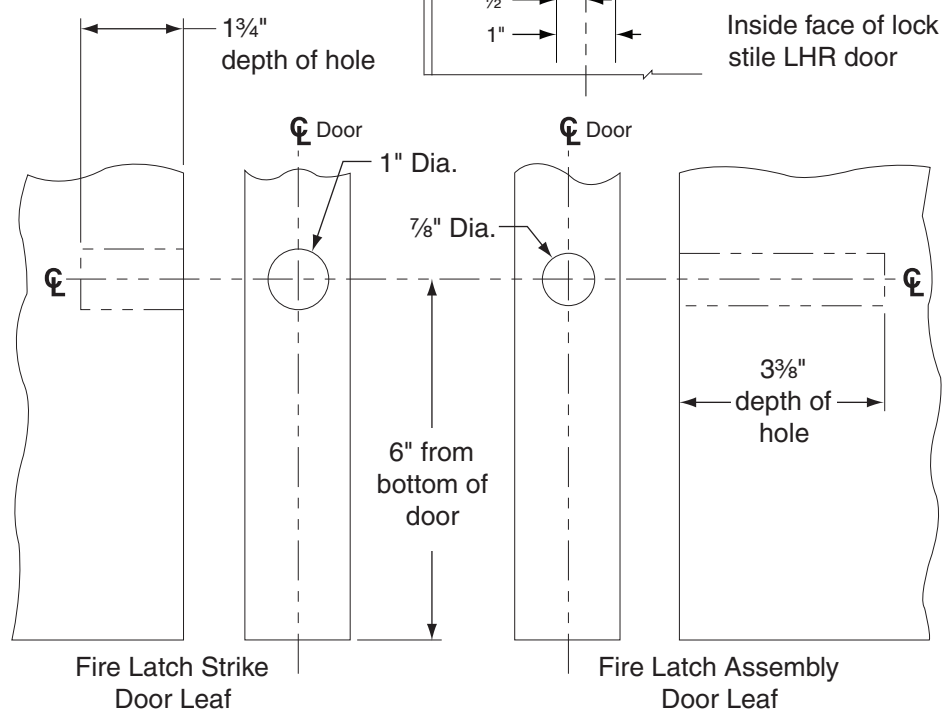
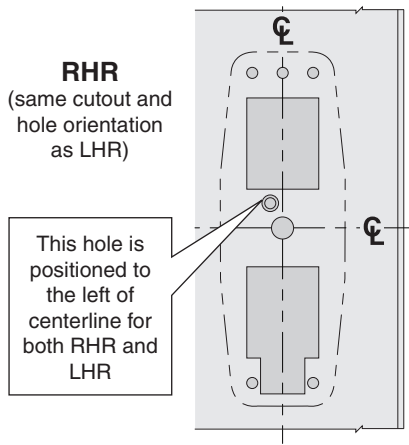
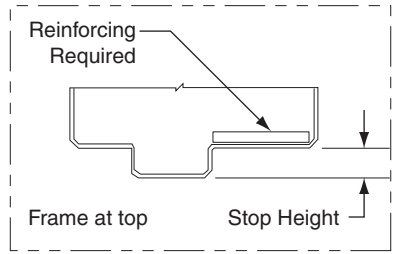


**LHR SHOWN**

1/4" Dia.  
82° Csk to 3/8" Dia.  
Inside Face Only  
(this hole is positioned to the left of centerline for both RHR and LHR)



- Glass bead kit available when required
- It is recommended the mounting holes be prepared in the field
- For outside trim preparation, when required add additional trim template
- \*\* Internal components located here. Avoid this area for mounting a pull.



**98/9949-F-LBL SERIES  
CONCEALED VERTICAL DEVICE**

**VON DUPRIN®**

NOTE: SEE MASTER SHEET NO. 10001 FOR SUGGESTED REINFORCING

TEMPLATE NUMBER: 24176703\_d

DATE: 8-29-19