

NOTES: SEE MASTER SHEET #10001 FOR SUGGESTED REINFORCING

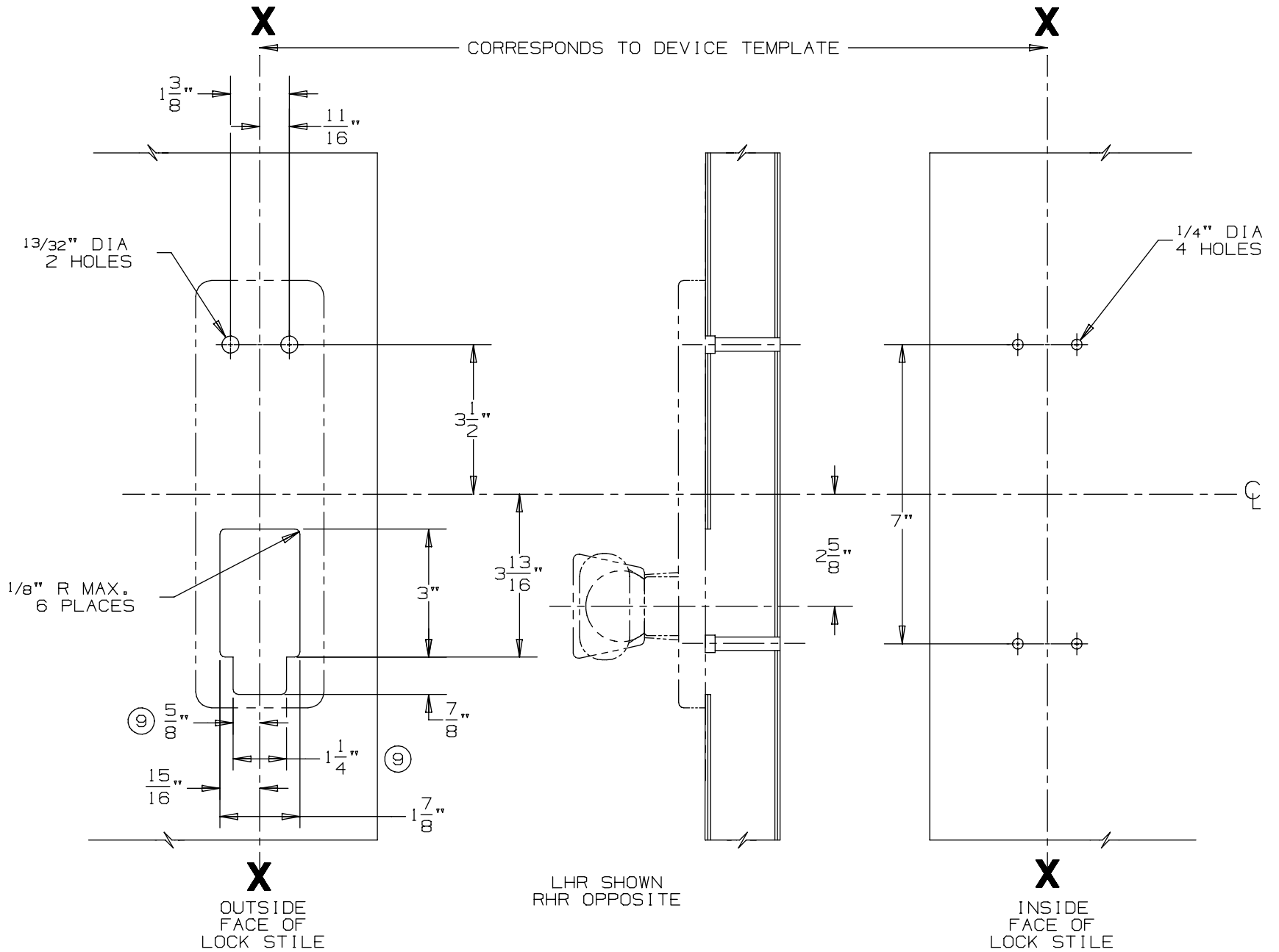
991 K-BE & 992 L-BE Trim

TEMPLATE NUMBER:

20273_a

DATE: 05-23-13

VON DUPRIN®



DEVICE APPLICATION SCHEDULE
98/99 SERIES RIM DEVICE
9827/9927 SERIES DEVICE
9847/9947 SERIES DEVICE
9875/9975 SERIES DEVICE