

NOTES: SEE MASTER SHEET #10001 FOR SUGGESTED REINFORCING

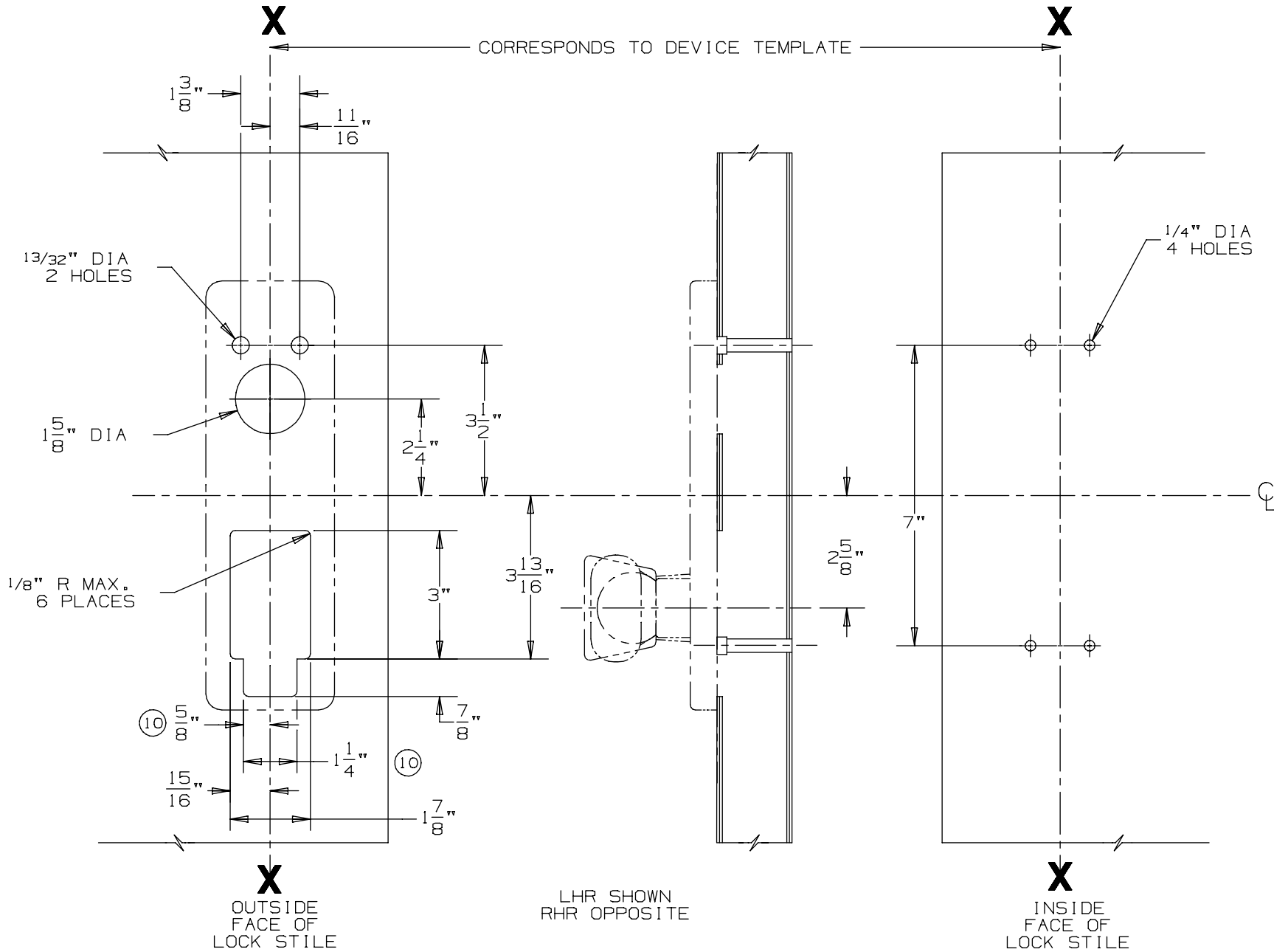
# 991 K & 992 L Trim for Mortise Device

TEMPLATE  
NUMBER:

20280\_a

DATE:  
05-23-13

# VON DUPRIN®



DEVICE APPLICATION SCHEDULE
9875/9975 SERIES DEVICE