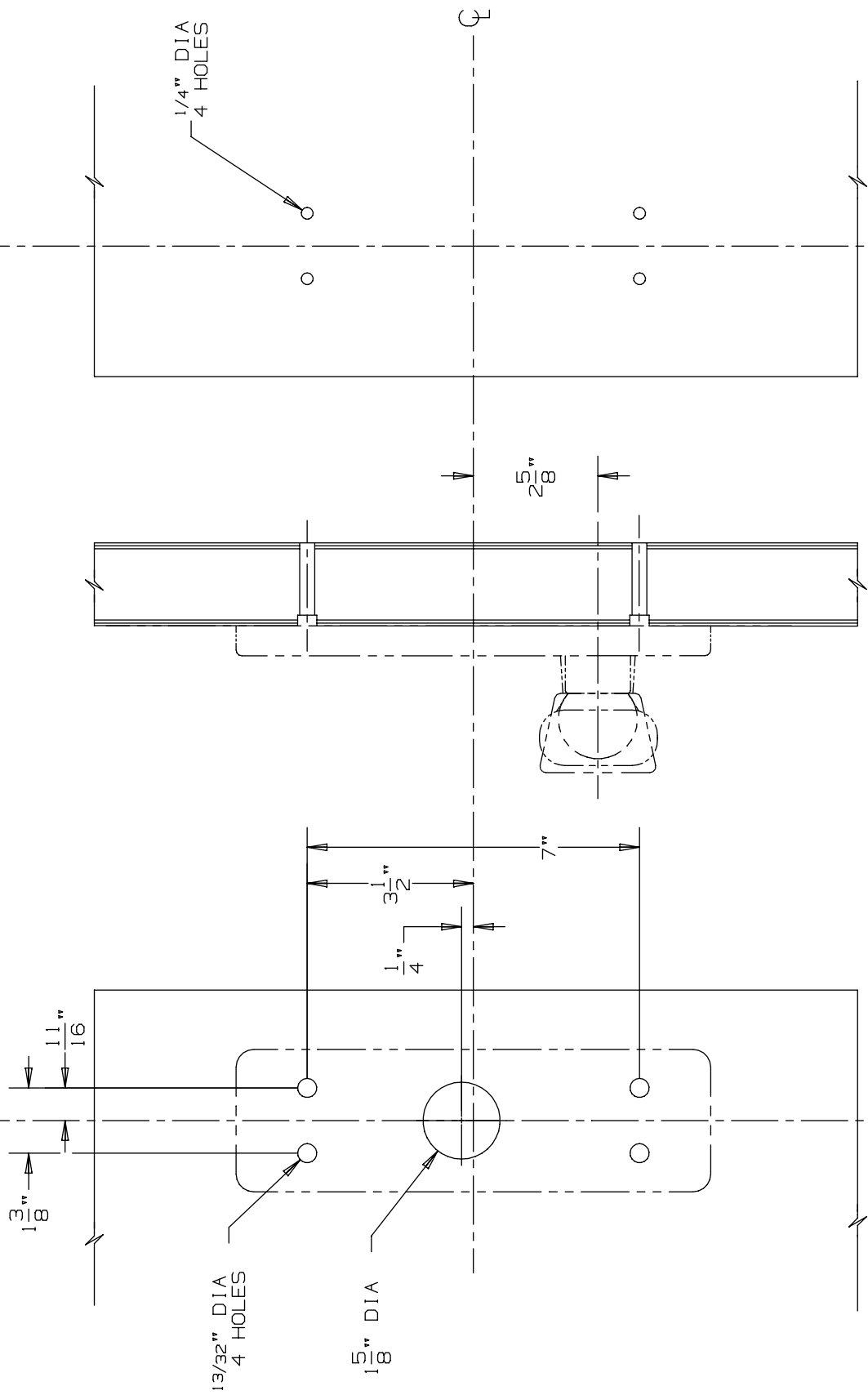


CORRESPONDS TO DEVICE TEMPLATE

**X**

**X**

INSIDE  
FACE OF  
LOCK STILE



LHR SHOWN  
RHR OPPOSITE

**X**

**X**

OUTSIDE  
FACE OF  
LOCK STILE

DEVICE APPLICATION SCHEDULE
98/99 SERIES RIM DEVICE
9827/9927 SERIES DEVICE
9847/9947 SERIES DEVICE

991 KR & 992 LR Trim  
(Rigid)

**VON DUPRIN®**

NOTES: SEE MASTER SHEET #10001 FOR SUGGESTED REINFORCING

TEMPLATE NUMBER:

20275\_a

DATE:  
05-23-13