

VON DUPRIN

AX exit devices

Featuring the 98/99,
94/95, 33/35A
and 22 Series devices

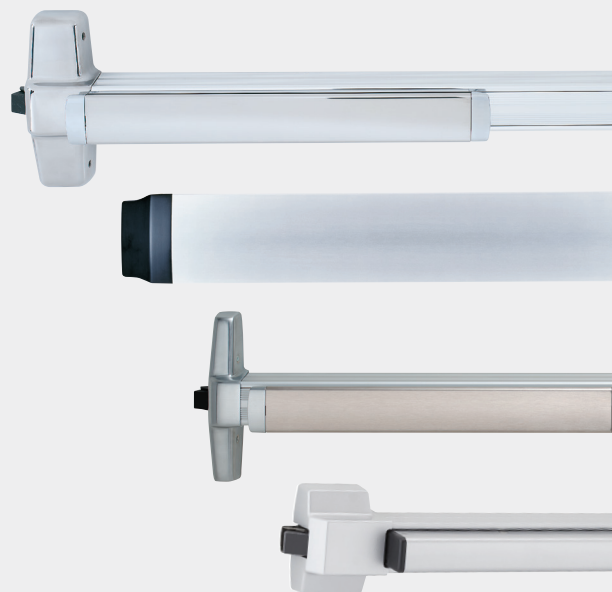
The exit device that
requires only 5 lbs. of force
to operate

The AX was born out of a need to provide the market with a solution that meets the 2010 ADA Standards for Accessible Design (Chapters 404.2.7 and 309.4) that state the force required to activate operable parts shall be 5 lbs. maximum. The 2013 California Building Code (Chapter 11B-309.4) adopted virtually identical requirements that went into effect January 1st, 2013.

Since pioneering the first exit device in 1908, Von Duprin life safety products have provided unparalleled quality, performance and flexibility for schools, hospitals, stadiums and public buildings. These products come with the support and customer care only offered by Von Duprin. Providing the confidence and peace of mind at critical moments of life safety.

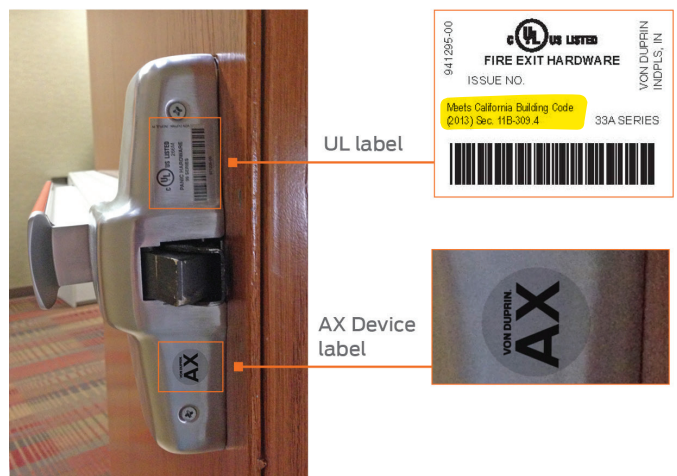
AX device specification requirements

Provide exit devices tested to ANSI/BHMA A156.3 Grade 1, [OPTION for specific compliant products/applications: UL certified to meet maximum 5 pound requirements according to the 2010 ADA Standards for Accessible Design (Chapters 404.2.7 and 309.4) and California Building Code (Chapter 11B-309.4)] and UL listed for Panic Exit or Fire Exit Hardware.



How to identify the Von Duprin AX device

1. Look for the "AX" Prefix in the door schedule and/or specification.
2. In the field, look for the Compliance note on the UL Label and the AX Device Label. Both labels can be found on the center case cover of the exit device as shown below.



Contact Allegion today at 888.925.4359 or ax.allegion.com to learn how the AX device can help you provide accessibility without compromise.

AX98/99 Series Specifications	
Device types	AX98/99 - Rim AXXP98/99 - Rim AX98/9927 - LBR AX98/9950 WDC - LBL AX98/9949 - LBL & LBL-AFL - Concealed Vertical Cable Less Bottom Latch
Device functions	EO, DT, NL, NLOP, L, LBE, LDT, LNL
Device lengths	3' / 4'
Rating	Panic and Fire
Electric options	EL - Electric latch retraction LX - Latchbolt monitor switch LXLC - Latchbolt monitor switch low current LXRX - Latchbolt pushpad monitor LXRXC - Latchbolt pushpad monitor low current RX - Pushpad monitor switch RXLC - Pushpad monitor switch low current RX2 - Double pushpad monitor switch ALK - Alarm kit SS - Signal switch
Mechanical options	GBK - Glass bead kit -2 - Double cylinder SNB - Sex bolts SEC - Security screws WP - Weep holes
Dogging options (Panic only)	Hex key dogging = Standard CD - Cylinder dogging DI - Dogging indicator LD - Less dogging SD - Special dogging

AX94/95 Series Specifications	
Device types	AX94/9547
Device functions	EO, DT, L, LDT, LBE, LNL
Device lengths	3' / 4'
Rating	Panic and Fire
Electric options	LX - Latchbolt monitor switch

AX33/35A Series Specifications	
Device types	AX33/35A - Rim AX33/3549 - LBL & LBL-AFL - Concealed Vertical Cable Less Bottom Latch
Device functions	EO, DT, NL, NLOP, L, LBE, LDT
Device lengths	3' / 4'
Rating	Panic and Fire (3349 LBL/AFL only)
Electric options	EL - Electric latch retraction LX - Latchbolt monitor switch LXLC - Latchbolt monitor switch low current LXRX - Latchbolt pushpad monitor LXRXC - Latchbolt pushpad monitor low current RX - Pushpad monitor switch RXLC - Pushpad monitor switch low current RX2 - Double pushpad monitor switch ALK - Alarm kit SS - Signal switch
Mechanical options	GBK - Glass bead kit SEC - Security screws WP - Weep holes
Dogging options (Panic only)	Hex key dogging = Standard CD - Cylinder dogging LD - Less dogging

AX22 Series Specifications	
Device types	AX22 - Rim AX2227 - LBR
Device functions	EO, DT, NL, NLOP, L, LBE
Device lengths	3' / 4'
Rating	Panic and Fire
Electric options	LX - Latchbolt monitor switch RX - Pushpad monitor switch RX2 - Double pushpad monitor switch ALK - Alarm kit
Mechanical options	GBK - Glass bead kit
Dogging options (Panic only)	Hex key dogging = Standard LD - Less dogging

Ordering information

AX	-	98	-	-	L	-	F	-	-2	-	US26D	-	3'	-	RHR	-	996L	-	06	-	SNB
Prefix		Series			Device type		Function		Rating		Suffix		Door Width		Handing		Trim		Lever Style		Accessories
1		2			3		4		5		6		8		9		10		11		12

Selections correspond with the numbers above. See price book for specific configuration options.

1	Prefix
AX*	Accessible Device
EL	Electric latch retraction
LX	Latchbolt Monitor Switch
LXLC	Latchbolt Monitor Switch Low Current
LXRX	Latchbolt Pushpad Monitor
LXRXC	Latchbolt Pushpad Monitor Low Current
RX	Pushpad Monitor Switch
RXLC	Pushpad Monitor Switch Low Current
RX2	Double Pushpad Monitor Switch
SS	Signal Switch
*Must be specified; may select more than one prefix.	
2	Series
98	Series 98 - smooth
99	Series 99 - grooved
94	Series 94 - smooth
95	Series 95 - grooved
33A	Series 33A - grooved
35A	Series 35A - smooth
22	Series 22

3	Device Type
N/A	Rim
27	Surface Vertical Rod
47	Concealed Vertical Rod
49	Concealed Vertical Cable
4	Function
EO	Exit Only
DT	Dummy Trim
NL	Night Latch
NLOP	Night Latch - Optional Pull
L	Lever
LBE	Lever - Blank Escutcheon
LDT	Lever, Rigid - Dummy Trim
LNL	Lever, Rigid - Night Latch
5	Rating
N/A	Panic
F	Fire-rated
6	Suffix
-2	Double Cylinder
LBL/LBR	Less Bottom Latch / Less Bottom Rod
LBL-AFL	Less Bottom Latch with Fire Pin
WH	Weep Holes

7	Finish
See pricebook for finish offering	
8	Door Width
3'	Standard Default
4'	
9	Handing
RHR	Right Hand Reverse
LHR	Left Hand Reverse
10	Trim
See pricebook for trim/control offering	
11	Lever Style
See pricebook for lever style offering	
12	Accessories
ALK	Alarm Kit
GBK	Glass Bead Kit
SNB	Sex Bolts

Contact Allegion today at 888.925.4359 or ax.allegion.com to learn how the AX device can help you provide accessibility without compromise.



ALLEGION™

© 2017 Allegion
010333, Rev. 1/17
allegion.com/us