

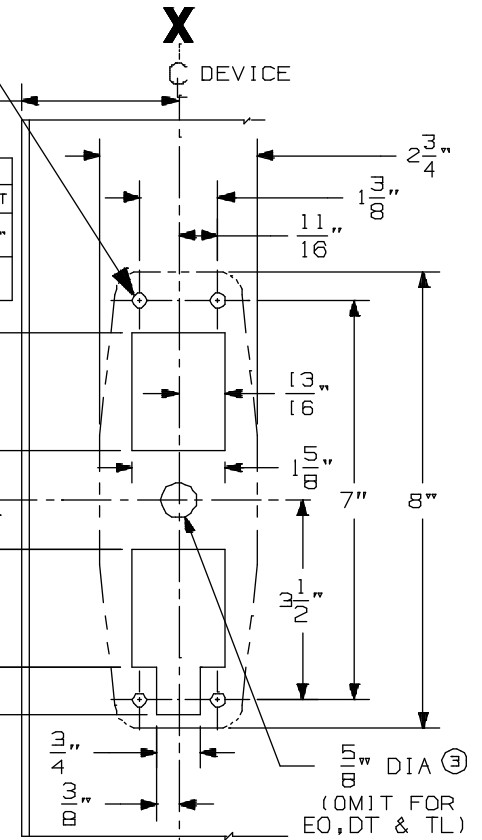
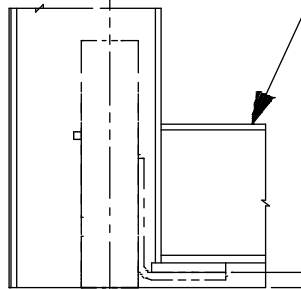
APPLICATION	PREPARATION
SURFACE APPLICATION	#10-24 TAP - 4 PLACES
990 TRIM APPLICATION SEX BOLT APPLICATION (SEE NOTE 1)	1/4 DIA. THIS SIDE 13/32 DIA. OPPOSITE SIDE - 4 PLACES

NOTE 1: THESE 4 HOLES TO BE PREPARED FOR SURFACE APPLICATION (#10-24 TAP) WHEN USING 696/697 TRIM. DO NOT PREPARE FOR SEX BOLTS

DEVICE APPLICATION SCHEDULE		
INSTALLATION	MIN. STILE	BACKSET
TWO VERT. ROD DEVICES OR SINGLE DOOR	3 11/16"	2 3/16"
VERTICAL ROD & MORTISE DEVICE	SEE TEMP. 10305	2 3/4"

BOTTOM LATCH CASE APPLICATION SAME AS TOP LATCH CASE APPLICATION

1 3/8" MINIMUM LATCH CASE WIDTH



PREP AT BOTTOM SAME AS TOP

LHR SHOWN
RHR OPPOSITE

NOTE: IT IS RECOMMENDED THE MOUNTING HOLES BE PREPARED IN THE FIELD FOR OUTSIDE TRIM PREPARATION, WHEN REQUIRED SEE ADDITIONAL TRIM TEMPLATE

CX98/9947 & CX98/9948 Series Concealed Vertical Rod Device

VON DUPRIN®

NOTES: SEE MASTER SHEET #10001 FOR SUGGESTED REINFORCING

TEMPLATE NUMBER:

10360_a

DATE:
05-22-13