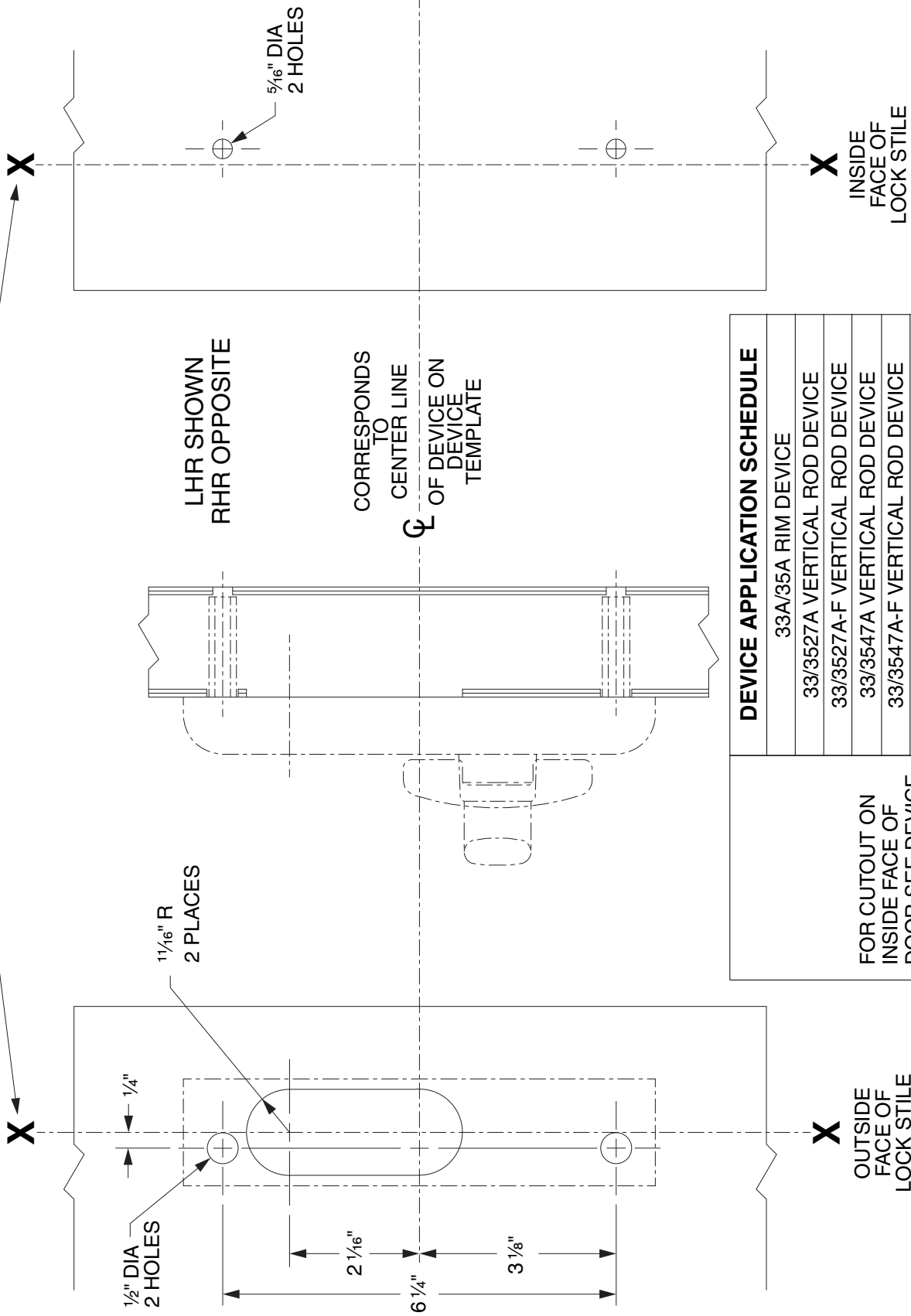


LINE X-X CORRESPONDS TO
LINE X-X ON DEVICE TEMPLATE



DEVICE APPLICATION SCHEDULE
33A/35A RIM DEVICE
33/3527A VERTICAL ROD DEVICE
33/3527A-F VERTICAL ROD DEVICE
33/3547A VERTICAL ROD DEVICE
33/3547A-F VERTICAL ROD DEVICE
33/3548A VERTICAL ROD DEVICE
33/3548A-F VERTICAL ROD DEVICE
33/3549A VERTICAL CABLE DEVICE
33/3549A-F VERTICAL CABLE DEVICE
33/3550A VERTICAL CABLE DEVICE
33/3550A-F VERTICAL CABLE DEVICE

FOR CUTOUT ON INSIDE FACE OF DOOR SEE DEVICE TEMPLATE

E360T-BE & E360L-BE CONTROL

VON DUPRIN®

NOTES: SEE MASTER SHEET #10001 FOR SUGGESTED REINFORCING

TEMPLATE NUMBER:

40089_e

DATE:
04-13-20