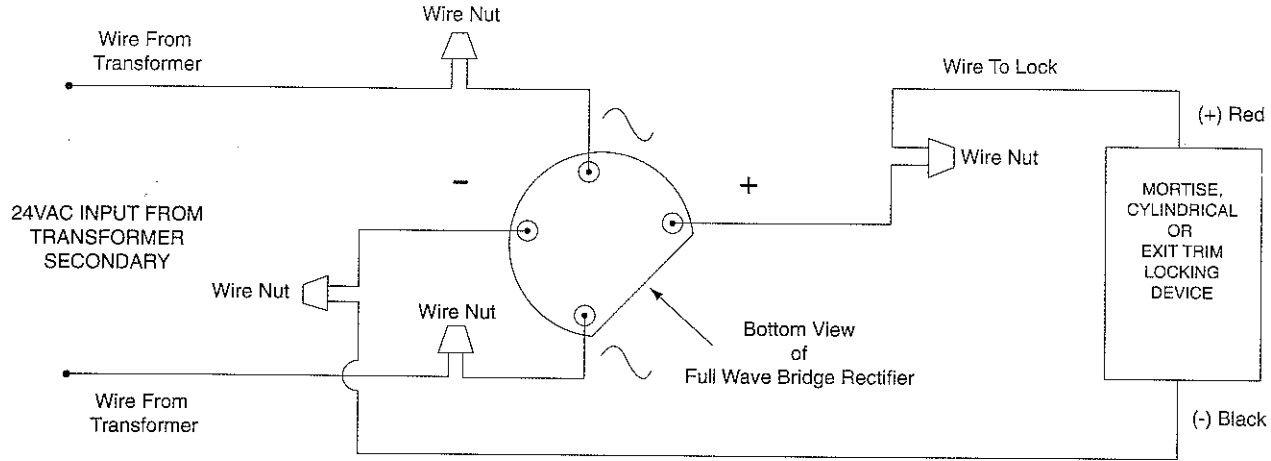


Wiring Instructions for SARGENT® Solenoid Operated Locks

For installation assistance, contact SARGENT Electrical Technical Support at 1-800-WIRE (9473)

Wiring Connections



Note: Cylindrical Lock Is Not Polarity Sensitive.
(4) Wire Nuts Are Enclosed to Make Connections.

Full Wave Bridge Rectifier Circuit Schematic

