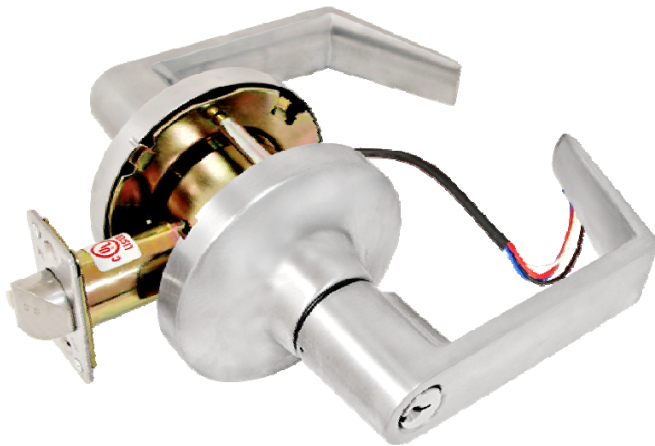


XCDC- Electrified Grade 1 Cylindrical- Clutched



GALA



QUEST



SENTINEL



Electronic Specifications:

- **Input Voltage:** Single, 24VDC or 12VDC
- **Fail Secure:** Available
- **Fail Safe:** Available
- **Electrical Parameter**
 - 12VDC 0.32AMP 37.5±10% Ohm
 - 24VDC 0.16AMP 150±10% Ohm
- **Wire:** 22AVG, 4 wires
- **RX Switch:** Request-to-Exit switch standard

Mechanical Specifications:

- **Door Thickness:** 1-3/8" -2"
- **Backset:** 2-3/4" standard, 2-3/8" , 3-3/4" and 5" available
- **Lever Trim:** Clutched
- **Latch:** Stainless steel, 1/2" throw standard. Anti-friction fire door latch with 3/4" throw available.
- **Strike:** ASA, 1-1/4" X 4-7/8"

- **Cylinder:** 6 pin solid brass. Schlage "C" Keyway, 2 keys per each cylinder, keyed different standard
- **Best® SFIC:** Available with or without core on all three lever trims.
- **Schlage® LFIC:** Available in less core on Sentinel lever trim only.
- **Keying:** KA, MK, GMK, GGMK available
- **Finish:** US26D and US10B
- **Lever:** Sentinel, Gala, and Quest
- **Door Prep:** 161 standard with through bolts
- **Warranty:** 1-year limited on electronic, 10-year limited on mechanical

Code Compliance:

- **ANSI/BHMA:** A156.2 Grade 1 Certified
- **UL:** UL 10C 3-Hour rated
- **BAA:** Meets guidelines of The Buy American Act
- **ADA:** Meets guidelines of The American with Disabilities Act



TownSteel Inc. 17901 Railroad Street, City of Industry, CA 91748

Toll Free: 877-858-0888 Tel: 626-965-8917 Fax: 626-965-8919 <http://www.townsteel.com>