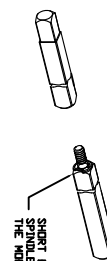


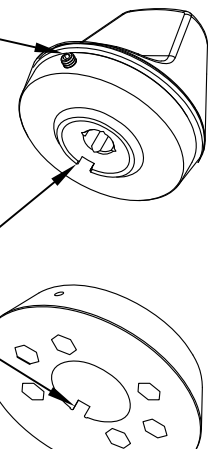
FIG 1

SPINDLE INSTALLATION



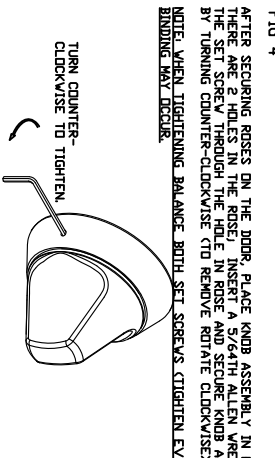
SPINDLES ARE INSERTED INTO THE MORTISE LOCK HUBS. THERE IS A SCREW CLIPPED INTO 1 SPINDLE FOR SCREWING INTO THE OTHER SPINDLE AND HOLDING THEM IN PLACE.

FIG 3



SET SCREWS TO BE FLUSH OR BELOW SURFACE WHEN INSTALLING. ALIGN TABS WHEN ASSEMBLING.

FIG 4



AFTER SECURING BUSHES ON THE DOOR, PLACE KNOB ASSEMBLY IN ROSE. THERE ARE 2 HOLES IN THE ROSE. INSERT A 5/64" ALLEN WRENCH IN THE SET SCREW THROUGH THE HOLE IN ROSE AND SECURE KNOB ASSEMBLY BY TURNING COUNTER-CLOCKWISE TO REMOVE ROTATE CLOCKWISE). NOTE: WHEN TIGHTENING BALANCE, BOTH SET SCREWS (TIGHTEN EVENLY) OR BINDING MAY OCCUR.

RX KNOB INSTALLATION GUIDE FOR TOWNSTEEL MORTISES

1. INSTALL SPINDLES IN MORTISE PER FIG 1. INSTALL 1/S & O/S ESCUTCHEONS ON THE DOOR AS SHOWN, SECURE WITH ESCUTCHEON MOUNTING SCREWS. DO NOT TIGHTEN UNTIL STEP 5.
2. PLACE THE 2 INSIDE MOUNTING POSTS THROUGH HOLE NUMBER AS DESIGNATED ON THE ROSE- SEE FIG 2 & TABLE FOR CORRECT HOLES.
3. HOLDING THE 2 POSTS IN POSITION, SLIDE ONTO THE MORTISE WITH POSTS GOING THROUGH THE MORTISE THROUGH HOLES. SEE FIG 2. NOTE- CAN INSTALL THE KNOB ASSEMBLY ON THE OUTSIDE PER STEP 7 AND THIS WILL HOLD THE POSTS IN POSITION.
4. ON THE OPPOSITE SIDE- PUT THE 2 MOUNTING SCREWS THROUGH HOLES (SEE TABLE) AS DESIGNATED ON THE ROSE- SEE FIG 2. ALIGN THE SCREWS WITH THE POSTS AND TIGHTEN.
5. INSTALL THE KNOB ASSEMBLY INTO THE ROSE- ALIGN TABS. SET SCREWS HAVE TO BE FLUSH OR BELOW THE SURFACE TO ALLOW CLEARANCE. SEE FIG 3.

NOTE: ONCE THE KNOB ASSEMBLY IS SET ON BOTH SIDES- ROTATE THE KNOB ON BOTH SIDES TO ENSURE THE MORTISE LATCH RETRACTS AND THERE IS NO BINDING. IF THE LATCH OR KNOB BINDS REMOVE THE KNOB ASSEMBLY FROM THE MOUNTING SCREW SIDE AND LOOSEN THE MOUNTING SCREWS AND ALIGN THE ROSE WITH THE CENTER OF THE HUBS AS MUCH AS POSSIBLE UNTIL NO BINDING OCCURS. TIGHTEN THE SCREWS (INCLUDING ESCUTCHEON MOUNTING SCREWS) AND RETRY.

6. INSERT THE ALLEN WRENCH THROUGH EACH HOLE (2 IN EACH ROSE) TO ENGAGE THE SET SCREW AND SECURE THE KNOB ASSEMBLY. ROTATE COUNTERCLOCKWISE TO TIGHTEN IN THE ASSEMBLY AND ROTATE CLOCKWISE TO LOOSEN. SEE FIG 4. NOTE: WHEN TIGHTENING BALANCE, BOTH SET SCREWS (TIGHTEN EVENLY) OR BINDING MAY OCCUR.
7. CHECK LOCK FOR CORRECT OPERATION BEFORE CLOSING THE DOOR.

[REV]

DESCRIPTION

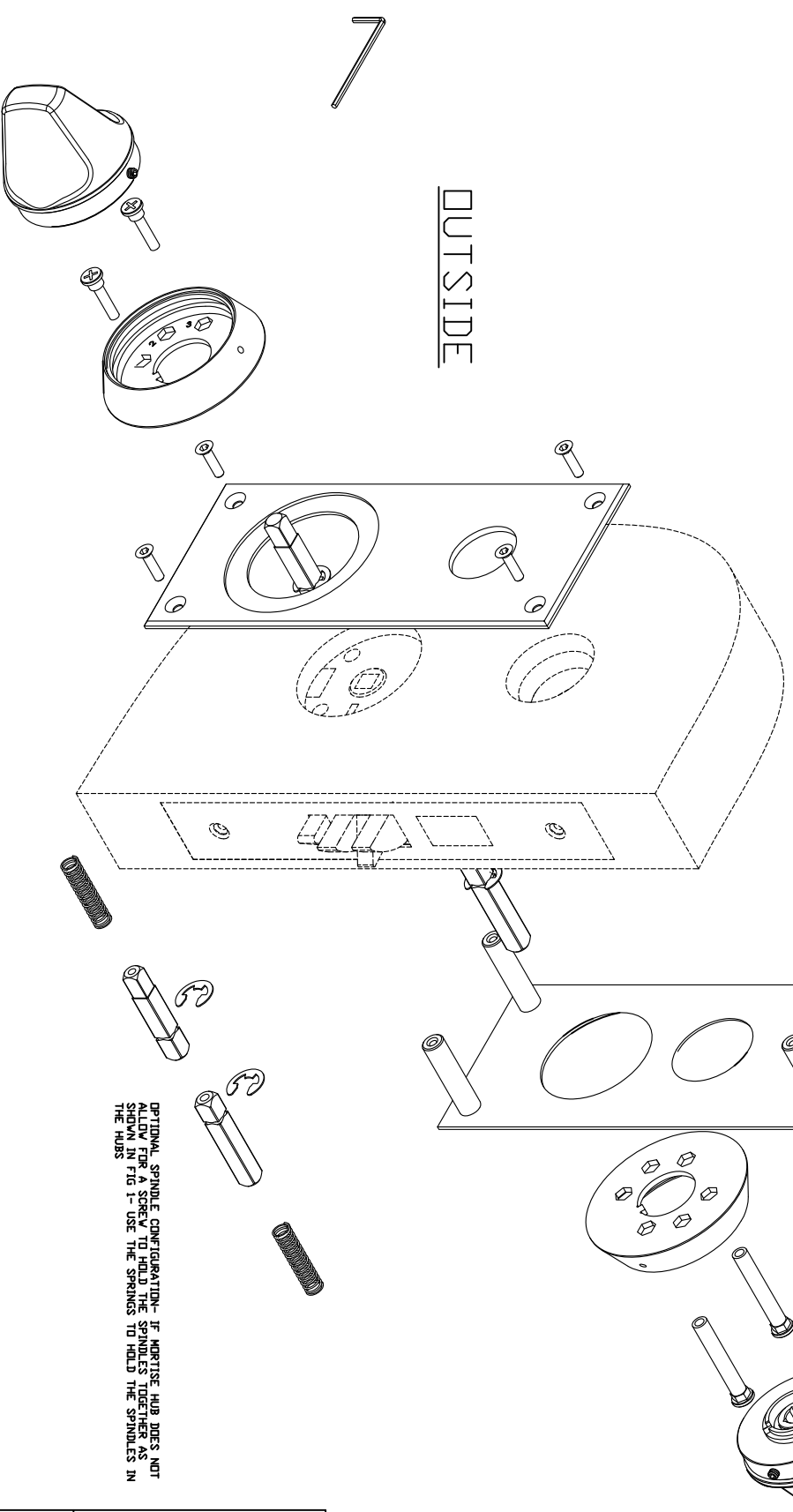
DATE

TABLE

| LOCK MANUFACTURE | NUMBER ON ROSE INSERT | SCREW PACK BAG NUMBER |
|------------------|-----------------------|-----------------------|
| SCHLAGE | 1 | BAG 4 |
| CORBIN | 1 | BAG 2 |
| ARROW | 1 | BAG 2 |
| PDO | 1 | BAG 2 |
| SARGENT | 1 | BAG 4 |
| TOWNSTEEL | 2 | BAG 4 |
| FALCON * | 2 | BAG 4 |
| MARKS | 2 | BAG 4 |
| BEST | 2 | BAG 4 |
| YALE 8700 | 3 | BAG 3 |
| YALE 8800 | 3 | BAG 3 |

* FOR FALCON LOCKS USE 2 EACH BUSHINGS (FROM THE SCREW PACK)

EXPLODED VIEW



THUMB TURN ASSY
OPTIONAL- SEE THUMB TURN INSTRUCTIONS

HOSPITAL LOCK PARTS LIST

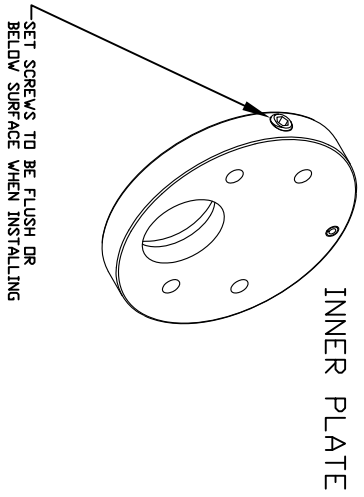
| DESCRIPTION | QUANTITY | SCREW PACK BAG |
|----------------------------------|----------|----------------|
| ESCUTCHEON MOUNTING SCREW (1 ea) | 1 | BAG 1 |
| SPINDLE THRU HOLE (1 ea) | 1 | BAG 2 |
| SPINDLE THRU HOLE (1 ea) | 1 | BAG 3 |
| SPINDLE THRU HOLE (1 ea) | 1 | BAG 4 |
| SPINDLE THRU HOLE (1 ea) | 1 | BAG 5 |
| SPINDLE THRU HOLE (1 ea) | 1 | BAG 6 |
| SPINDLE THRU HOLE (1 ea) | 1 | BAG 7 |
| SPINDLE THRU HOLE (1 ea) | 1 | BAG 8 |
| SPINDLE THRU HOLE (1 ea) | 1 | BAG 9 |
| SPINDLE THRU HOLE (1 ea) | 1 | BAG 10 |
| SPINDLE THRU HOLE (1 ea) | 1 | BAG 11 |
| SPINDLE THRU HOLE (1 ea) | 1 | BAG 12 |
| SPINDLE THRU HOLE (1 ea) | 1 | BAG 13 |
| SPINDLE THRU HOLE (1 ea) | 1 | BAG 14 |
| SPINDLE THRU HOLE (1 ea) | 1 | BAG 15 |
| SPINDLE THRU HOLE (1 ea) | 1 | BAG 16 |
| SPINDLE THRU HOLE (1 ea) | 1 | BAG 17 |
| SPINDLE THRU HOLE (1 ea) | 1 | BAG 18 |
| SPINDLE THRU HOLE (1 ea) | 1 | BAG 19 |
| SPINDLE THRU HOLE (1 ea) | 1 | BAG 20 |
| SPINDLE THRU HOLE (1 ea) | 1 | BAG 21 |
| SPINDLE THRU HOLE (1 ea) | 1 | BAG 22 |
| SPINDLE THRU HOLE (1 ea) | 1 | BAG 23 |
| SPINDLE THRU HOLE (1 ea) | 1 | BAG 24 |
| SPINDLE THRU HOLE (1 ea) | 1 | BAG 25 |
| SPINDLE THRU HOLE (1 ea) | 1 | BAG 26 |
| SPINDLE THRU HOLE (1 ea) | 1 | BAG 27 |
| SPINDLE THRU HOLE (1 ea) | 1 | BAG 28 |
| SPINDLE THRU HOLE (1 ea) | 1 | BAG 29 |
| SPINDLE THRU HOLE (1 ea) | 1 | BAG 30 |
| SPINDLE THRU HOLE (1 ea) | 1 | BAG 31 |
| SPINDLE THRU HOLE (1 ea) | 1 | BAG 32 |
| SPINDLE THRU HOLE (1 ea) | 1 | BAG 33 |
| SPINDLE THRU HOLE (1 ea) | 1 | BAG 34 |
| SPINDLE THRU HOLE (1 ea) | 1 | BAG 35 |
| SPINDLE THRU HOLE (1 ea) | 1 | BAG 36 |
| SPINDLE THRU HOLE (1 ea) | 1 | BAG 37 |
| SPINDLE THRU HOLE (1 ea) | 1 | BAG 38 |
| SPINDLE THRU HOLE (1 ea) | 1 | BAG 39 |
| SPINDLE THRU HOLE (1 ea) | 1 | BAG 40 |
| SPINDLE THRU HOLE (1 ea) | 1 | BAG 41 |
| SPINDLE THRU HOLE (1 ea) | 1 | BAG 42 |
| SPINDLE THRU HOLE (1 ea) | 1 | BAG 43 |
| SPINDLE THRU HOLE (1 ea) | 1 | BAG 44 |
| SPINDLE THRU HOLE (1 ea) | 1 | BAG 45 |
| SPINDLE THRU HOLE (1 ea) | 1 | BAG 46 |
| SPINDLE THRU HOLE (1 ea) | 1 | BAG 47 |
| SPINDLE THRU HOLE (1 ea) | 1 | BAG 48 |
| SPINDLE THRU HOLE (1 ea) | 1 | BAG 49 |
| SPINDLE THRU HOLE (1 ea) | 1 | BAG 50 |
| SPINDLE THRU HOLE (1 ea) | 1 | BAG 51 |
| SPINDLE THRU HOLE (1 ea) | 1 | BAG 52 |
| SPINDLE THRU HOLE (1 ea) | 1 | BAG 53 |
| SPINDLE THRU HOLE (1 ea) | 1 | BAG 54 |
| SPINDLE THRU HOLE (1 ea) | 1 | BAG 55 |
| SPINDLE THRU HOLE (1 ea) | 1 | BAG 56 |
| SPINDLE THRU HOLE (1 ea) | 1 | BAG 57 |
| SPINDLE THRU HOLE (1 ea) | 1 | BAG 58 |
| SPINDLE THRU HOLE (1 ea) | 1 | BAG 59 |
| SPINDLE THRU HOLE (1 ea) | 1 | BAG 60 |
| SPINDLE THRU HOLE (1 ea) | 1 | BAG 61 |
| SPINDLE THRU HOLE (1 ea) | 1 | BAG 62 |
| SPINDLE THRU HOLE (1 ea) | 1 | BAG 63 |
| SPINDLE THRU HOLE (1 ea) | 1 | BAG 64 |
| SPINDLE THRU HOLE (1 ea) | 1 | BAG 65 |
| SPINDLE THRU HOLE (1 ea) | 1 | BAG 66 |
| SPINDLE THRU HOLE (1 ea) | 1 | BAG 67 |
| SPINDLE THRU HOLE (1 ea) | 1 | BAG 68 |
| SPINDLE THRU HOLE (1 ea) | 1 | BAG 69 |
| SPINDLE THRU HOLE (1 ea) | 1 | BAG 70 |
| SPINDLE THRU HOLE (1 ea) | 1 | BAG 71 |
| SPINDLE THRU HOLE (1 ea) | 1 | BAG 72 |
| SPINDLE THRU HOLE (1 ea) | 1 | BAG 73 |
| SPINDLE THRU HOLE (1 ea) | 1 | BAG 74 |
| SPINDLE THRU HOLE (1 ea) | 1 | BAG 75 |
| SPINDLE THRU HOLE (1 ea) | 1 | BAG 76 |
| SPINDLE THRU HOLE (1 ea) | 1 | BAG 77 |
| SPINDLE THRU HOLE (1 ea) | 1 | BAG 78 |
| SPINDLE THRU HOLE (1 ea) | 1 | BAG 79 |
| SPINDLE THRU HOLE (1 ea) | 1 | BAG 80 |
| SPINDLE THRU HOLE (1 ea) | 1 | BAG 81 |
| SPINDLE THRU HOLE (1 ea) | 1 | BAG 82 |
| SPINDLE THRU HOLE (1 ea) | 1 | BAG 83 |
| SPINDLE THRU HOLE (1 ea) | 1 | BAG 84 |
| SPINDLE THRU HOLE (1 ea) | 1 | BAG 85 |
| SPINDLE THRU HOLE (1 ea) | 1 | BAG 86 |
| SPINDLE THRU HOLE (1 ea) | 1 | BAG 87 |
| SPINDLE THRU HOLE (1 ea) | 1 | BAG 88 |
| SPINDLE THRU HOLE (1 ea) | 1 | BAG 89 |
| SPINDLE THRU HOLE (1 ea) | 1 | BAG 90 |
| SPINDLE THRU HOLE (1 ea) | 1 | BAG 91 |
| SPINDLE THRU HOLE (1 ea) | 1 | BAG 92 |
| SPINDLE THRU HOLE (1 ea) | 1 | BAG 93 |
| SPINDLE THRU HOLE (1 ea) | 1 | BAG 94 |
| SPINDLE THRU HOLE (1 ea) | 1 | BAG 95 |
| SPINDLE THRU HOLE (1 ea) | 1 | BAG 96 |
| SPINDLE THRU HOLE (1 ea) | 1 | BAG 97 |
| SPINDLE THRU HOLE (1 ea) | 1 | BAG 98 |
| SPINDLE THRU HOLE (1 ea) | 1 | BAG 99 |
| SPINDLE THRU HOLE (1 ea) | 1 | BAG 100 |

TownSteel
707 N. BARRANCA AVE #6
COVINA, CALIF 91723

| DRAFT UNLESS OTHERWISE SPECIFIED: | TOLERANCES UNLESS OTHERWISE SPECIFIED: | MATERIAL NOTED |
|-----------------------------------|--|---|
| 1" MAX | XX (METRIC) = ±0.4 | HEAT TREAT: NA |
| SC | XXX (METRIC) = ±0.15 | FINISH: NA |
| DATE: 10/19/12 | FRACTIONS = ±.8 | TITLE: RX REJUVENATOR, KNOB, ESCUTCHEON, ASSY INST. |
| | ANGLES = ±1/2° | PART#: RRX-E-K |
| | MACHINED SURFACES 125/ | |
| | THIRD ANGLE | |

THIS DRAWING AND THE INFORMATION CONTAINED THEREON OR DERIVED THEREFROM ARE THE CONFIDENTIAL PROPERTY OF TOWNSTEEL, INC. IT IS NOT TO BE REPRODUCED, OR DISCLOSED TO OTHERS, AND MAY BE USED ONLY FOR THE PURPOSE OF ENABLING THE PARTY TO WHOM IT HAS BEEN LOANED TO QUOTE ON OR FILL AN ORDER FOR TOWNSTEEL, INC., OR AS MAY BE OTHERWISE AUTHORIZED BY TOWNSTEEL, INC. IN WRITING.

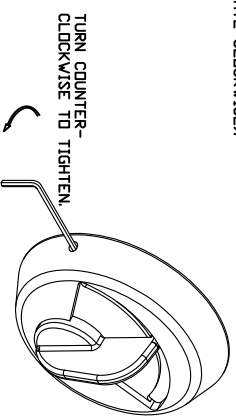
FIG 1



INNER PLATE

FIG 2

IN BOTH HOLES IN THE THUMB TURN, PLACE A 5/64TH ALLEN WRENCH (PROVIDED) THROUGH THE HOLE IN THE SET SCREW IN THE INNER PLATE AND SECURE THE THUMB TURN BY TURNING COUNTER-CLOCKWISE (TO REMOVE ROTATE CLOCKWISE).



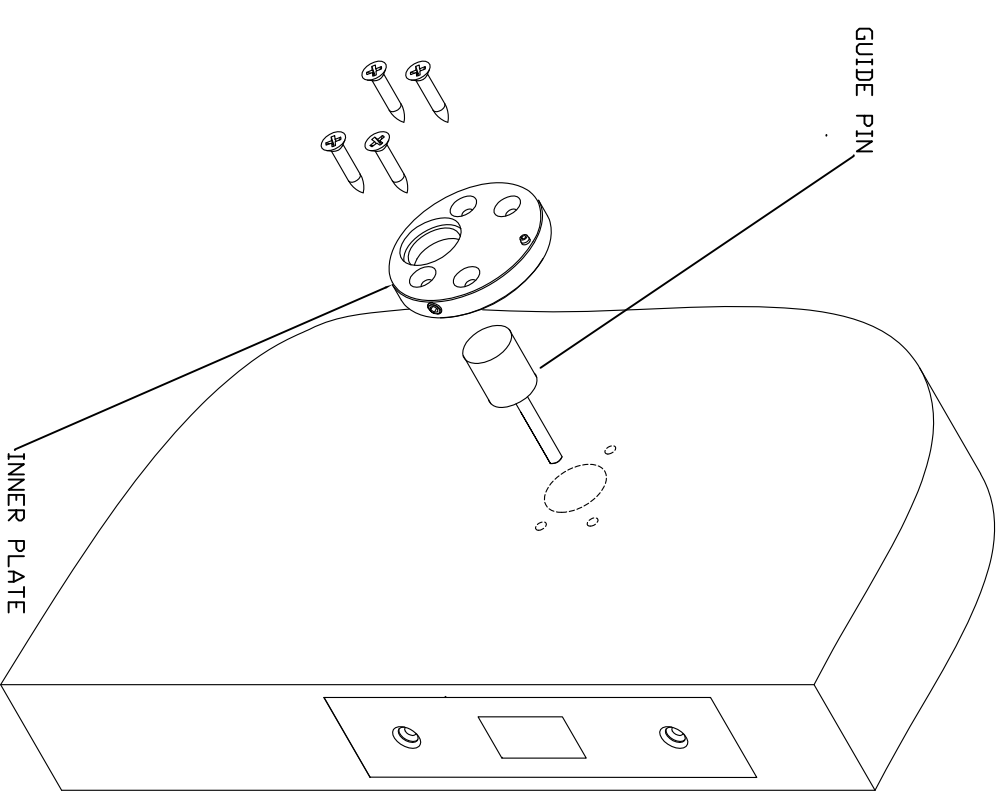
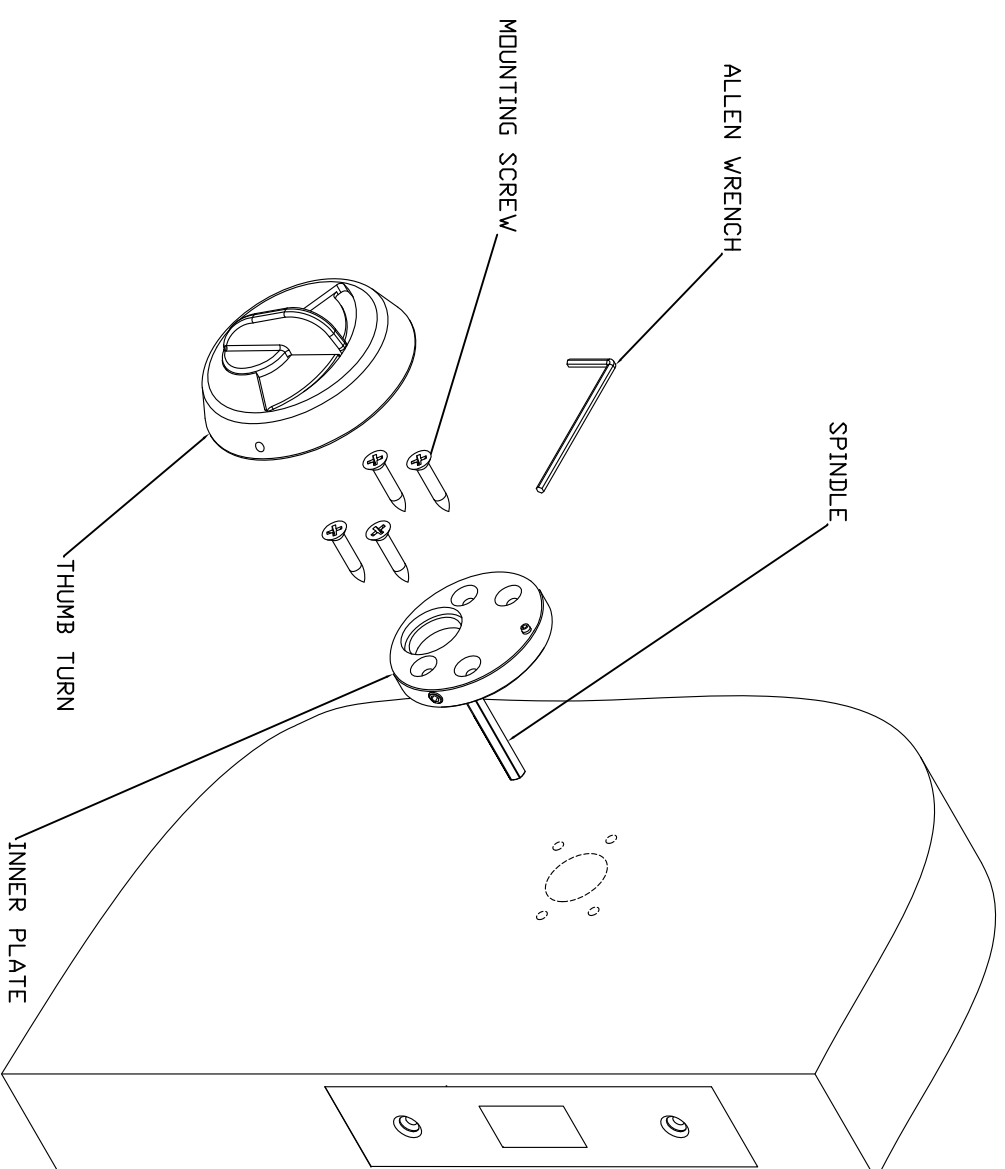
REV

DESCRIPTION

DATE

EXPLODED VIEW

USING GUIDE PIN TO ALIGN INNER PLATE



HOSPITAL THUMB TURN INSTRUCTIONS

1. PREPARE DOOR PER TEMPLATE.
2. USE THE GUIDE PIN TO HELP ALIGN THE INNER PLATE. MATCH DRILL (OR MARK LOCATION AND DRILL) THE 4 HOLES TO MOUNT THE INNER PLATE. PILOT HOLE SIZE FOR #6 SCREW IN A WOOD DOOR IS $\frac{3}{4}$ ".
3. MOUNT THE INNER PLATE WITH THE 4 SCREWS.
4. INSTALL THE SPINDLE AND THUMB TURN (SEE EXPLODED VIEW).
5. OPERATE THE LOCK TO ENSURE PROPER INSTALLATION AND ALIGNMENT.
6. TIGHTEN THE THUMB TURN ONTO THE INNER PLATE- SEE FIG 1 & 2. INSERT THE ALLEN WRENCH THROUGH EACH HOLE (2 IN EACH INNER PLATE) TO ENGAGE THE SET SCREW AND SECURE THE THUMB TURN ASSEMBLY. ROTATE COUNTERCLOCKWISE TO TIGHTEN IN THE ASSEMBLY AND ROTATE CLOCKWISE TO LOOSEN. SEE FIG 1 & 2.
7. CHECK LOCK FOR CORRECT OPERATION BEFORE CLOSING THE DOOR.

TownSteel

707 N. BARRANCA AVE #6
 COVINA, CALIF 91723

| | | | |
|--|---|--|---|
| DRAFT UNLESS OTHERWISE SPECIFIED: 1" MAX | B | TOLERANCES UNLESS OTHERWISE SPECIFIED: XX (METRIC) =±0.4 XXX (METRIC) =±0.15 FRACTIONS = ±.8 ANGLES = ±1/2° MACHINED SURFACES 125/ THIRD ANGLE | MATERIAL: NOTED |
| | | | HEAT TREAT: NA |
| DRAWN BY: SC | | | FINISH: 32D |
| DATE: 10/7/11 | | | TITLE: ADA THUMB TURN ASSY INSTRUCTIONS |
| | | | PART#: ADA-TTURN |

THIS DRAWING AND THE INFORMATION CONTAINED THEREON OR DERIVED THEREFROM ARE THE CONFIDENTIAL PROPERTY OF TOWNSTEEL, INC. IT IS NOT TO BE REPRODUCED, OR DISCLOSED TO OTHERS, AND MAY BE USED ONLY FOR THE PURPOSE OF ENABLING THE PARTY TO WHOM IT HAS BEEN LOANED TO QUOTE ON OR FILL AN ORDER FOR TOWNSTEEL, INC., OR AS MAY BE OTHERWISE AUTHORIZED BY TOWNSTEEL, INC. IN WRITING.

INSTALLATION GUIDE FOR ELECTRIFIED MORTISES - SOLENOID ONLY

INSTRUCTIONS

1. PREPARE MORTISE POCKET IN DOOR PER TEMPLATE. ACCESS FOR THE WIRING TO BE PER INSTALLERS REQUIREMENTS. IT IS RECOMMENDED THAT AN ACCESS CHANNEL IS BORED TO PROVIDE CONTACT FROM THE ELECTRIC TRANSFER HINGE OR OTHER MEANS OF TRANSFER TO THE MORTISE POCKET.
2. CONNECT WIRES AS NECESSARY AND SLIP THE MORTISE INTO THE PREPARED POCKET IN THE DOOR. TAKE CARE TO ENSURE WIRES ARE NOT PINCHED OR DAMAGED. NOTE: IT IS RECOMMENDED THAT ALL WIRING BE DONE BY A LICENSED ELECTRICIAN FAMILIAR WITH THE SUPPORTING EQUIPMENT.
3. ALWAYS ENSURE DOOR OPERATES PROPERLY BEFORE LOCKING.

SPECIFICATIONS:

SOLENOID (SPECIFIED BY MODEL NUMBER):

| | | | | | |
|-------|---------------|-----------|-------|------------|-----------|
| 24VDC | 114.7+10%-0 Ω | WIRE SIZE | 24AWG | OPERATE AT | 24VDC±10% |
| 12VDC | 28.8+10%-0 Ω | WIRE SIZE | 24AWG | OPERATE AT | 12VDC±10% |

TERMS

FAIL SECURE- OUTER TRIM IS UNLOCKED WHEN POWER IS APPLIED. WHEN POWER IS REMOVED THE OUTER TRIM REMAINS LOCKED.

FAIL SAFE- OUTER TRIM IS LOCKED WHEN POWER IS APPLIED. WHEN POWER IS REMOVED THE OUTER TRIM REMAINS UNLOCKED.

