



F22

Ultra thin fingerprint access control terminal

F22 is an indoor-rated standalone fingerprint reader with built-in Wi-Fi which can be connected either directly to a door lock or any access control panel via Wiegand interface.



Biometric Performance:

Reliable, durable and highly accurate ZK fingerprint sensor with latest fingerprint matching algorithm which provides less than 1.5 second user recognition.



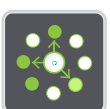
Communication:

Wiegand output for connecting to access control panel and both Wi-Fi and Ethernet port for fast and reliable network communication.



Capacity:

Can store up to 3,000 templates and 30,000 transactions. The data can be backed up to a USB flash drive and can also be transferred to another reader in the absence of network connectivity.



Options:

Internal Proximity Card or Mifare Card reader allows dual factor authentication for access control.



Full Access Control Built In:

Relay Outputs for electric lock and alarm. Inputs for door status sensor and request to exit hardware. Supports multiple time zones and personnel groups for programming valid entry zones.



Easy Operation and Management:

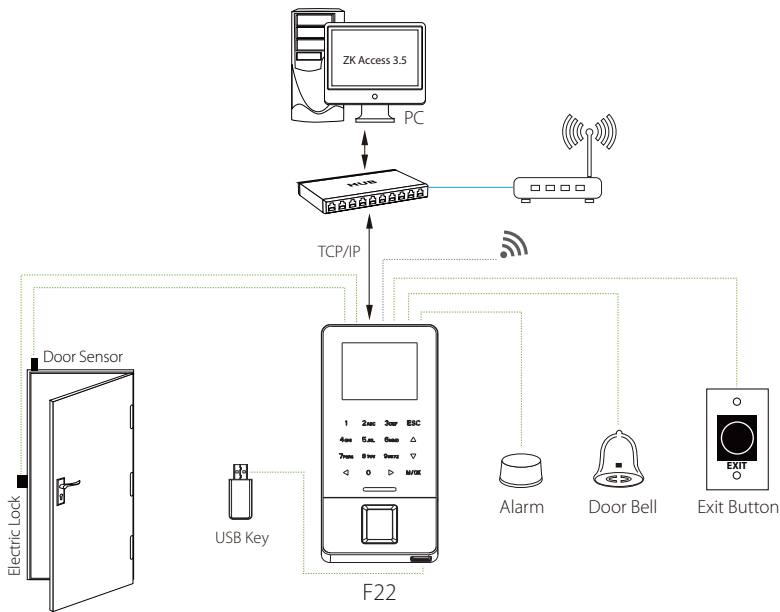
Works without a computer. Complete setup and programming can be done via the F22s keypad and embedded firmware. Audio-Visual Indication for acceptance and rejection of valid/invalid fingerprints, cards and passwords.



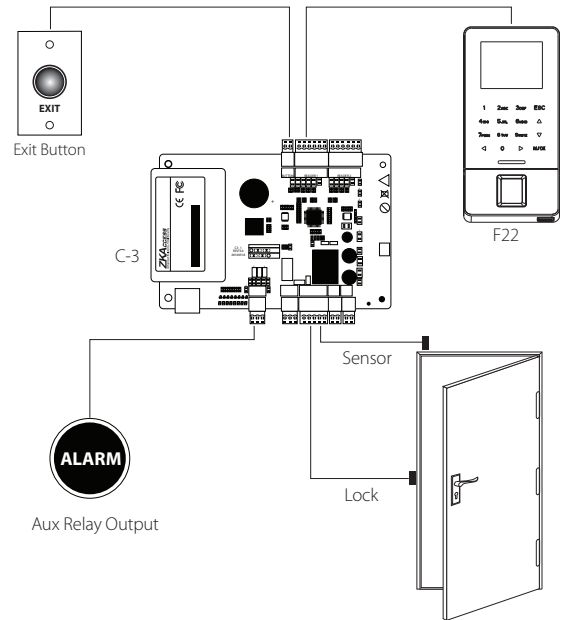
For Software Developers:

Free SDK and development tools are available for developers/partners who wish to integrate F22 with any application which requires verifying people. Custom development is also available for OEM partners upon request.

Standalone Installation



Installation with Access Control Panel



Specifications

Capacity

Fingerprint: 3,000 templates
Transactions: 100,000 logs

Access Control Interface

3rd party electric lock, door sensor, exit button, alarm, door bell

Communication

Wi-Fi, Ethernet, Weigand Input and Output, RS485, USB Host

Display

2.4" TFT LCD Color Display

Power

12V DC, 3A

Dimensions

Height: 6.2 in (158 mm)
Width: 3 in (78 mm)
Depth: .75 in (19 mm)
Weight: 0.90lbs (0.41kg)

Environment

Operating Temperature: 32° to 113° F (0° to 45° C)
Operating Humidity: 20% to 80%

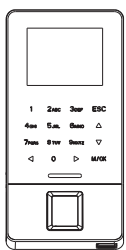
Supported Card Formats

ID Card, Mifare Card

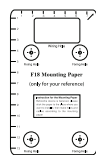
Part Numbers

F22 with ZKAccess card reader
F22-Mifare with Mifare card reader

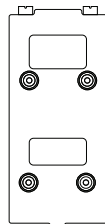
What's in the Box



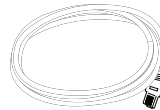
F22



Installation Template



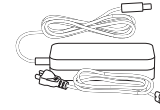
Back Plate



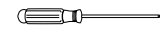
Network Cable



Screws



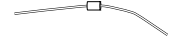
AC Power Adapter



Screwdriver



Cables



Diode

ZKTeco USA

6 Kingsbridge Road, Unit 8, Fairfield, NJ 07004
Phone: (862) 505-2101 • Fax: (862) 204-5906 • sales@zkaccess.com • www.zkaccess.com

© Copyright 2016. ZKTeco Inc. ZKTeco Logo and ZKAccess Logo are registered trademarks of ZKTeco or a related company. All other product and company names mentioned are used for identification purposes only and may be the trademarks of their respective owners. All specifications are subject to change without notice. All rights reserved.

