

TF1700

Standalone Outdoor Fingerprint Reader Controller

IP65 rated Fingerprint Access Control Reader



Biometric Performance:

Reliable, durable and highly accurate ZK fingerprint sensor with latest fingerprint matching algorithm which provides less than 1.5 second user recognition.



Communication:

TF1700 installs easily on your network having both Ethernet and RS232/485 serial ports. Weigand-OUT port allows connection of reader to ZK or any 3rd party access control panel. Using Weigand-IN port you connect to any card reader for dual factor authentication



Easy Operation and Management:

Works without computer. Complete setup and programming can be done via keypads and embedded firmware. Audio-Visual Indication for acceptance and rejection of valid/invalid fingerprints, cards and passwords.



Options:

Internal Proximity Card or Mifare Card reader allows dual factor authentication for access control.



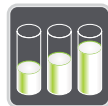
Full Access Control Built In:

Relay Outputs for electric lock and alarm. Inputs for door status sensor and request to exit hardware. Supports multiple timezones and personnel groups for programming valid entry zones.



Waterproof Enclosure:

IP65 rated waterproof enclosure permits this reader to be used for outdoor applications. The cables and connectors are epoxy sealed at the back of the reader.



Capacity:

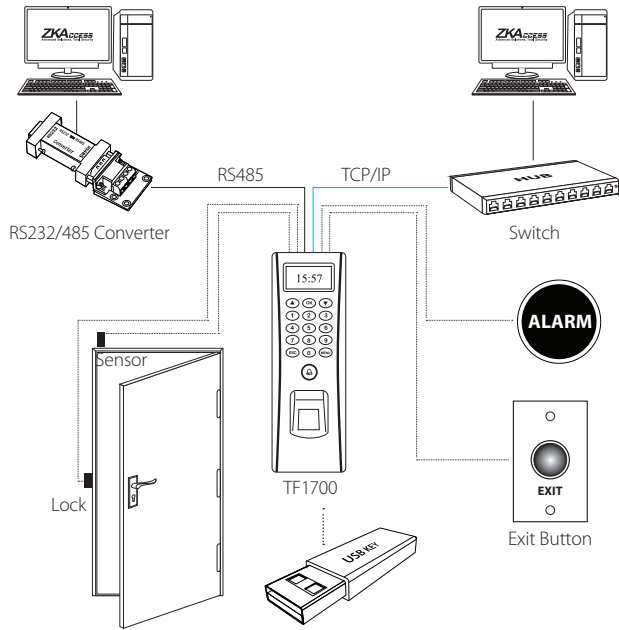
Can store up to 2,200 fingerprint templates, 10,000 cards and 30,000 transactions. The data can be backed up to a USB Flash Disk and can also be transferred to another reader in the absence of computer connectivity.



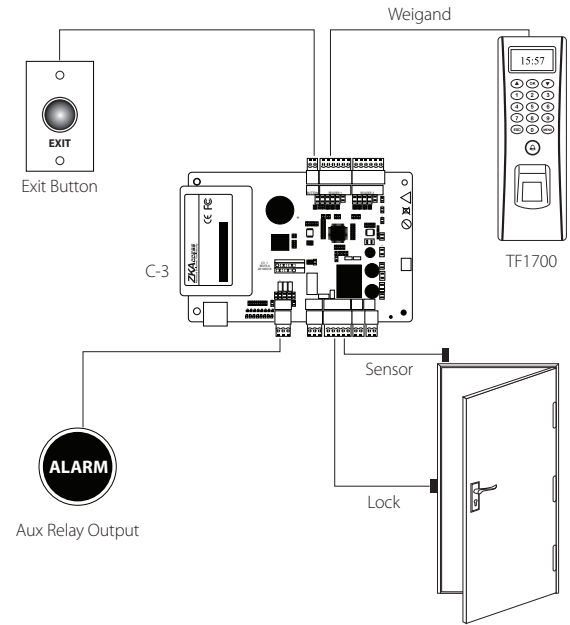
For Software Developers:

Free SDK and development tools are available for developers/partners who wish to integrate TF1700 with any application which requires verifying people.

Standalone Installation



Installation with Access Control Panel



Specifications

Capacity

Fingerprint: 2,200 templates
Cards: 10,000 templates
Transactions: 30,000 logs

Access Control Interface

3rd party electric lock, door sensor, exit button, alarm, door bell

Display

3.5inch OLED Monochrome Display

Communication

Ethernet, RS 232, RS485, Weigand Input and Output, USB Host

Power

12V DC, 3A

Environment

Operating Temp: 32° to 113° F (0° to 45° C)
Operating Humidity: 20% to 80%

Dimensions

Height: 7.28in (18.5cm)
Length: 2.46in (6.25 cm)
Width: 1.63in (4.15 cm)
Weight: 0.80lbs (0.36kg)

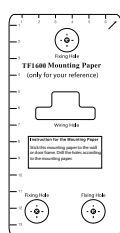
Part Numbers

TF1700 with Proximity card reader
TF1700-M with Mifare card reader

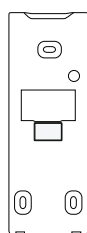
What's in the Box



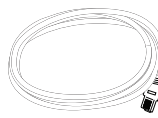
TF1700



Installation Template



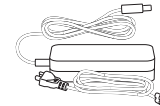
Back Plate



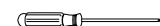
Network Cable



Screws



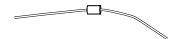
AC Power Adapter



Screwdriver



Cables



Diode

ZKTeco USA

6 Kingsbridge Road, Unit 8, Fairfield, NJ 07004
Phone: (862) 505-2101 • Fax: (862) 204-5906 • sales@zkaccess.com • www.zkaccess.com

© Copyright 2016. ZKTeco Inc. ZKTeco Logo and ZKAccess Logo are registered trademarks of ZKTeco or a related company. All other product and company names mentioned are used for identification purposes only and may be the trademarks of their respective owners. All specifications are subject to change without notice. All rights reserved.

