

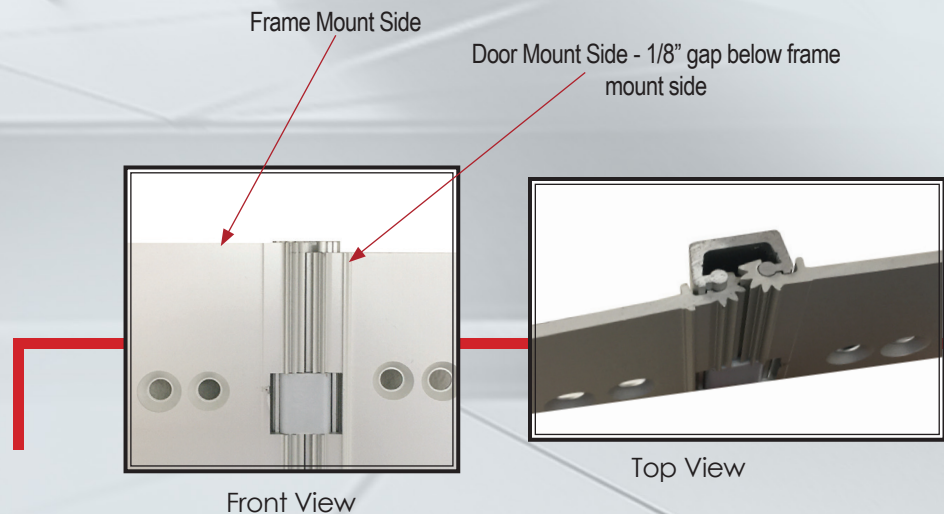
A120

Aluminum Geared Hinge

Easy Install
Full Mortise Hinge



Top Half - Front View



FEATURES:

- Full Concealed, Heavy Duty Hinge
- 1/8" Door Inset
- Compatible with hollow metal, minimum reveal, narrow-faced frames, and narrow doors.
- 450 lbs. door weight maximum
- Allows for vertical adjustability after the hinge is secured to door and frame, reducing overall installation time and cost.

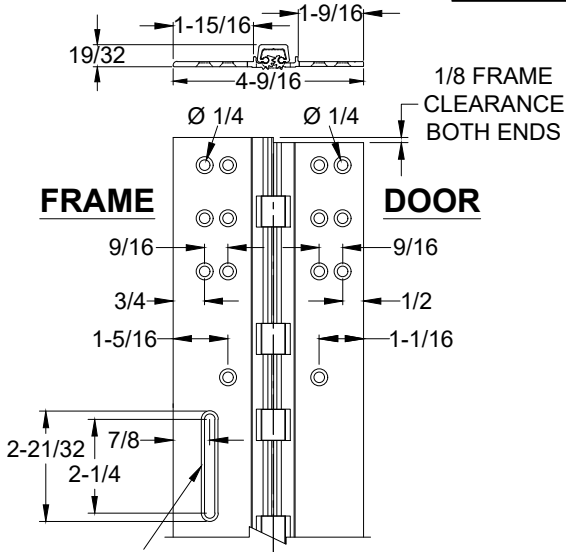
AVAILABLE FINISHES:

- Clear
- Dark Bronze
- Black Anodized

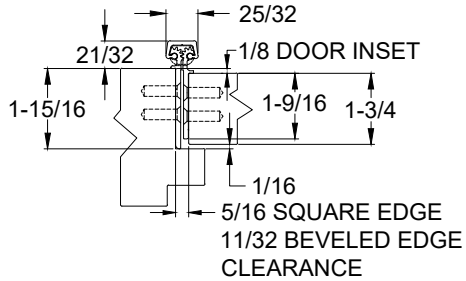
STANDARD LENGTHS:

- 83"
- 95"
- 120"

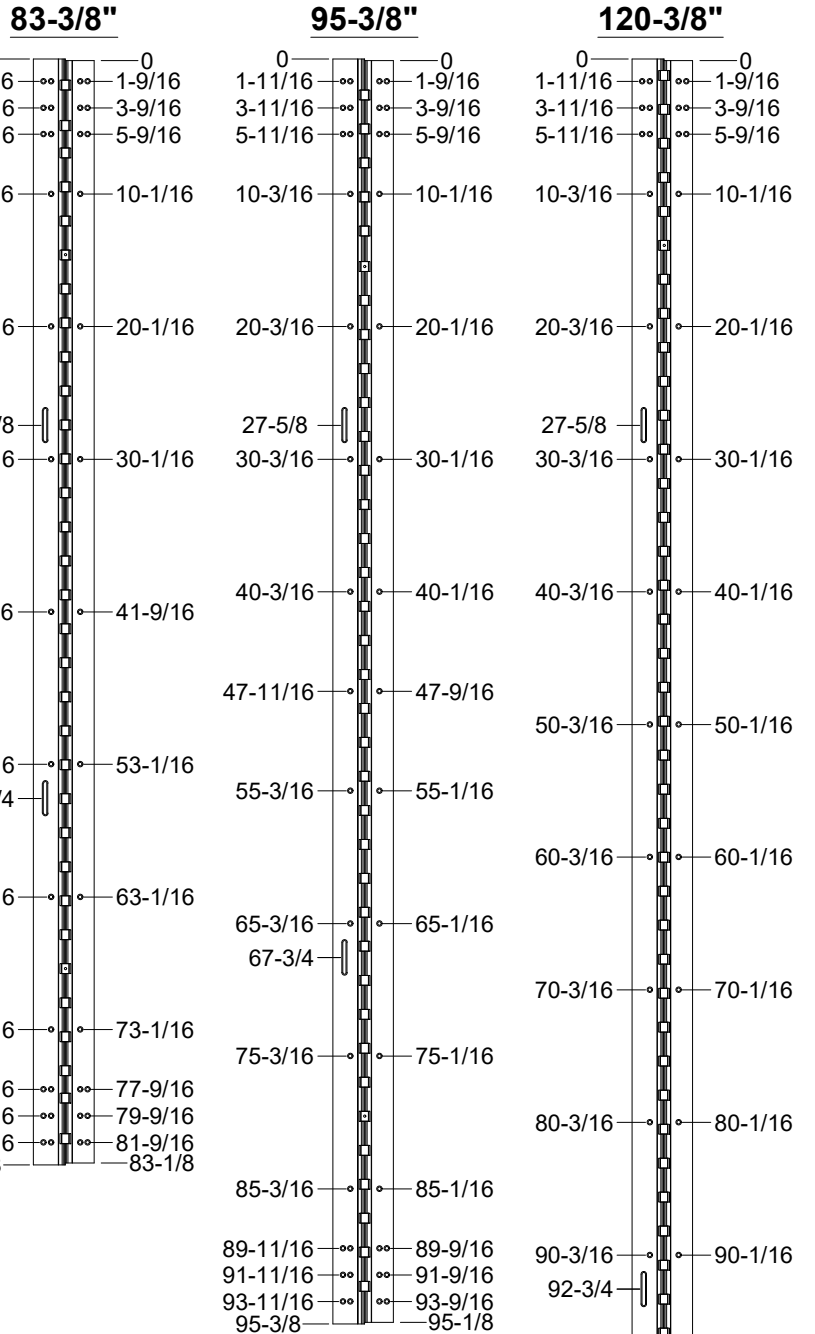
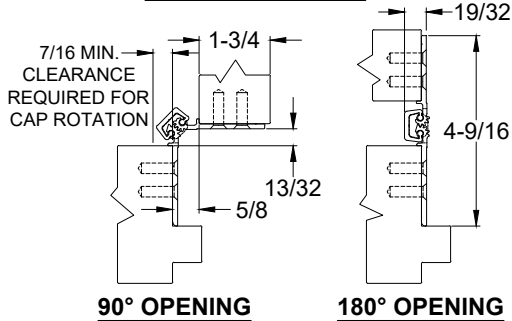
A120HD - ALUMINUM GEARED HINGE, 1/8" INSET, FULL CONCEALED WITH FRAME MOUNTING SLOTS



SLOT COUNTERSUNK FOR #12 FLAT HEAD SCREW



CLOSED POSITION



- NOTES:**
- HINGES CUT TO CUSTOM LENGTH ARE CUT FROM THE BOTTOM. PLEASE SPECIFY HANDING.
 - ALL DIMENSIONS ARE IN INCHES.
 - ALL DIMENSIONS ARE TO CENTERLINE OF HOLES & SLOTS.



STANDARD HINGE SIZES & SCREW DETAIL

NOMINAL DOOR HEIGHT		7'0"	8'0"	10'0"
ACTUAL HINGE LENGTH		83-3/8"	95-3/8"	120-3/8"
FRAME	12-24 x 3/4" PHILLIPS FLAT HEAD, UNDERCUT, SELF DRILLING, THREAD FORMING TEK MACHINE SCREW	21	23	25
DOOR	12-24 X 3/4" PH. F.H. UNDERCUT SELF DRILLING THREAD FORMING TEK SCREW	19	21	23

A120-ALUMINUM GEARED HINGE WITH FRAME MTG SLOTS-01.DWG



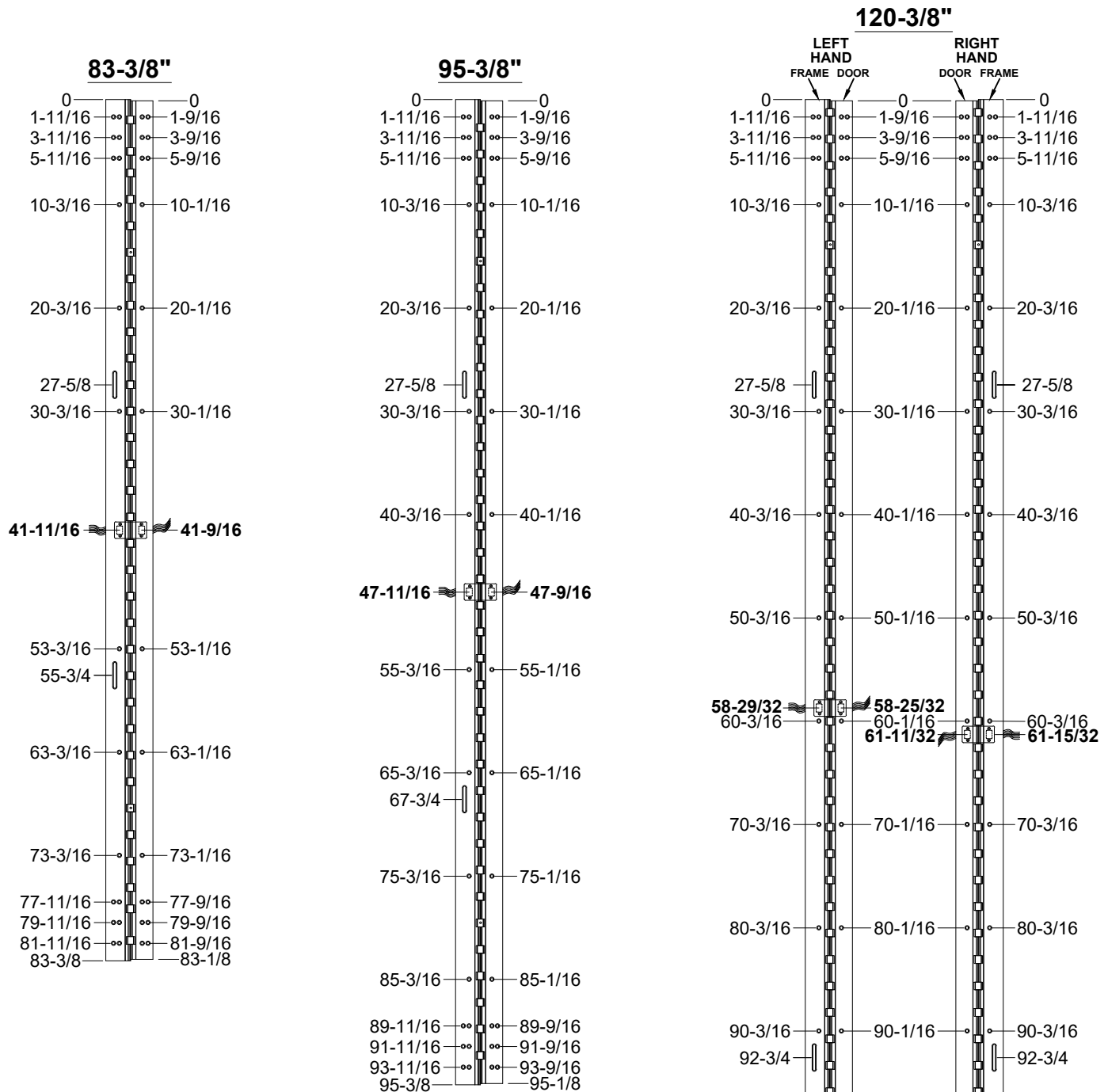
www.abhmf.com
E-mail: abhinfo@abhmf.com
Architectural Builders Hardware Mfg., Inc.
1222 Ardmore Ave., Itasca, IL 60143
630.875.9900; FAX 800.9FAXABH (932.9224)

A120
ALUMINUM GEARED HINGE
WITH FRAME MTG SLOTS

© 2020 ABH Mfg., Inc.
printed in USA

PAGE 1 OF 1
REVISED 09-10-20

**A120HD - "EA" OPTION, EASY ACCESS CONCEALED ELECTRIFICATION, 1/8" INSET,
FULL CONCEALED WITH FRAME MOUNTING SLOTS**



12 WIRE STANDARD

NOTES:
1. HINGES CUT TO CUSTOM LENGTH ARE CUT FROM BOTTOM OF HINGE. CUSTOM CUT HINGE REQUIRES HANDING.



STANDARD HINGE SIZES & SCREW DETAIL

NOMINAL DOOR HEIGHT		7'0"	8'0"	10'0"
ACTUAL HINGE LENGTH		83-3/8"	95-3/8"	120-3/8"
FRAME	12-24 x 3/4" PHILLIPS FLAT HEAD, UNDERCUT, SELF DRILLING, THREAD FORMING TEK MACHINE SCREW	20	22	25
DOOR	12-24 x 3/4" PHILLIPS FLAT HEAD, UNDERCUT, SELF DRILLING, THREAD FORMING TEK MACHINE SCREW	18	20	23

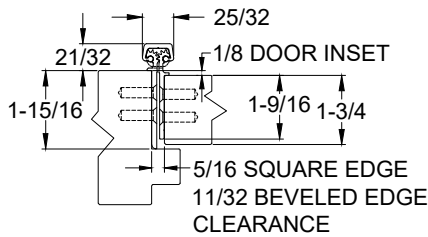
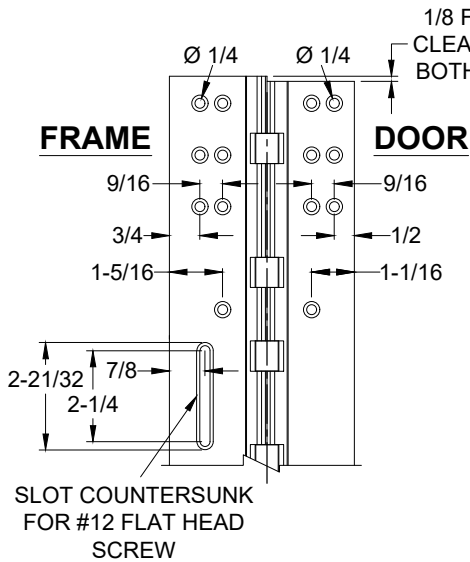
A120-EA OPTION, EASY ACCESS CONCEALED ELECTRIFICATION WITH FRAME MTG SLOTS-1-00.DWG



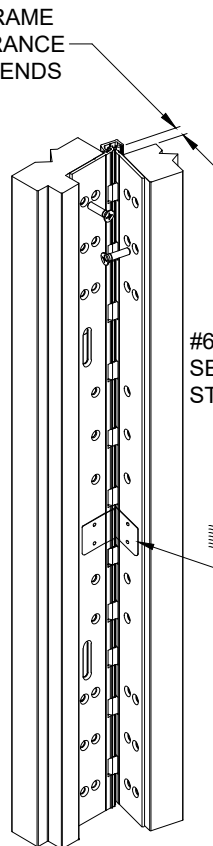
www.abhmf.com
E-mail: abhinfo@abhmf.com
Architectural Builders Hardware Mfg., Inc.
1222 Ardmore Ave., Itasca, IL 60143
630.875.9900; FAX 800.9FAXABH (932.9224)

A120HD
"EA" OPTION, EASY ACCESS
WITH FRAME MOUNTING SLOTS
© 2021 ABH Mfg., Inc. printed in USA
PAGE 1 OF 2
ISSUED 01-12-21

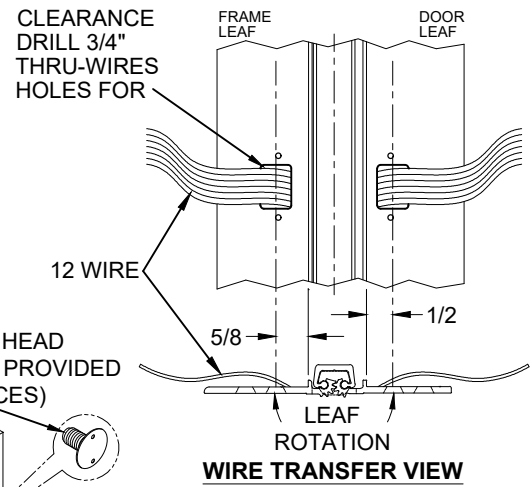
A120HD - "EA" OPTION, EASY ACCESS CONCEALED ELECTRIFICATION, 1/8" INSET, FULL CONCEALED WITH FRAME MOUNTING SLOTS



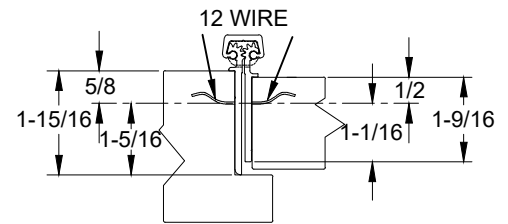
CLOSED POSITION



**ISOMETRIC VIEW
~90° OPENING**

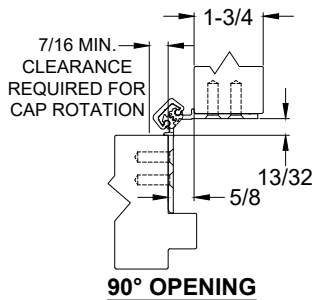


WIRE TRANSFER VIEW

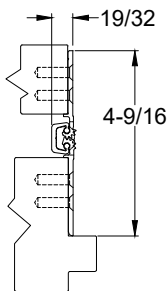


WIRE TRANSFER VIEW

**ISOMETRIC VIEW
180° OPENING**



90° OPENING

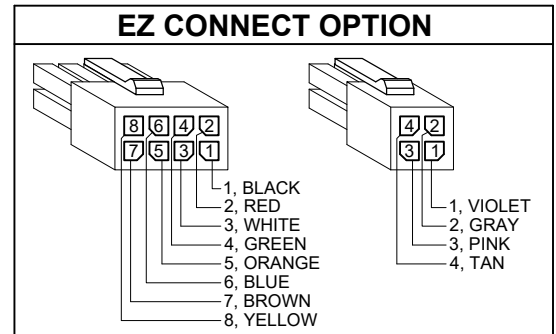


180° OPENING

NOTES:

1. MOLEX CONNECTOR OPTION AVAILABLE - SUFFIX "EZ".

* SPECIFY ELECTRIFIED HARDWARE MANUFACTURER FOR CONNECTOR COMPABILITY



SPECIFICATION:

DESCRIPTION: SINGLE CONDUCTOR #22 AWG MINIATURE HOOK-UP WIRE FOR APPLICATIONS REQUIRING EXTREME FLEXIBILITY.

CONDUCTOR: #22 AWG 168/44 (0.002") SOFT BARE COPPER LHL.

INSULATION: PROPRIETARY FORMULATION PVC 0.010" NOM. WALL MEETS VW-1 FLAME REQUIREMENT.

DIAMETER: 0.053" ± 0.003".

RESISTANCE: 16.7 OHMS MAX. @ 20°C, PER 1000 FT.

VOLTAGE RATING: 600 VOLTS RMS, DEPENDING ON SPECIFICATION.

AVAILABLE AS RoHS COMPLIANT.

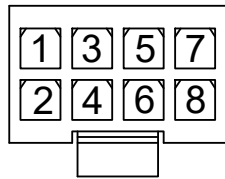


www.abhmfg.com
E-mail: abhinfo@abhmfg.com
Architectural Builders Hardware Mfg., Inc.
1222 Ardmore Ave., Itasca, IL 60143
630.875.9900; FAX 800.9FAXABH (932.9224)

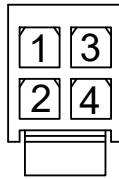
A120HD
"EA" OPTION, EASY ACCESS
WITH FRAME MOUNTING SLOTS
© 2021 ABH Mfg., Inc.
printed in USA
PAGE 2 OF 2
ISSUED 01-12-21

ABH EZ CONNECT WIRE COLOR & POSITION STANDARD FOR MOLEX™ MICRO-FIT 3.0 CONNECTOR

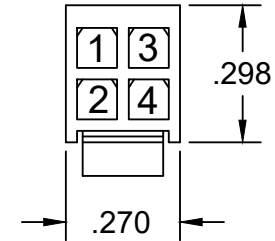
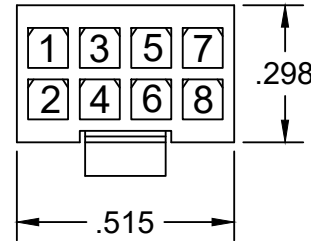
(TERMINAL INSERTION END SHOWN)



- 1: BLACK
- 2: RED
- 3: WHITE
- 4: GREEN
- 5: ORANGE
- 6: BLUE
- 7: BROWN
- 8: YELLOW

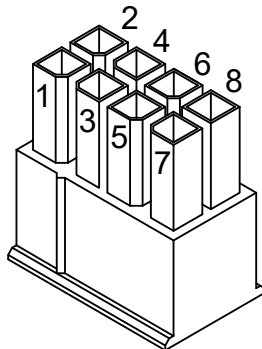


- 1: VIOLET
- 2: GREY
- 3: PINK
- 4: TAN

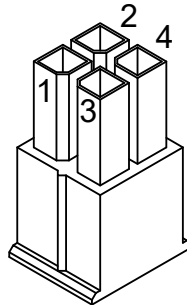


NOTE:
ABH CAN MATCH ANY MANUFACTURERS
WIRE COLOR POSITION

- AVAILABLE ON**
- STAINLESS STEEL CONTINUOUS HINGE
 - ALUMINUM CONTINUOUS HINGES
 - POWER TRANSFER UNITS
 - PIVOTS
 - ABH MORTISE LOCKS



8-PIN HOUSING
WIRE POSITION



4-PIN HOUSING
WIRE POSITION

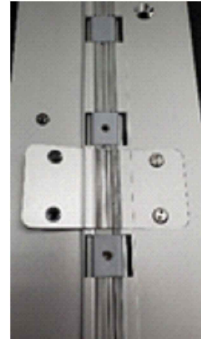
CONNECTORS COMPATIBLE WITH CONNECTORS
ON ASSA ABLOY PRODUCTS*

* BRAND NAMES ARE TRADEMARKS OR REGISTERED TRADEMARKS OF THEIR RESPECTIVE COMPANIES

EA THRU-WIRE REPLACEMENT INSTRUCTIONS

Removal of Old Wires

1. Turn off Power to avoid shock.
2. Remove (4) #6 Spanner Flat Head Screws from the covers on the face of each hinge leaf.



3. Remove (2) covers to expose the wires.



4. Pull wires through opening and disconnect from power source and electrified hardware.



EA THRU-WIRE REPLACEMENT INSTRUCTIONS

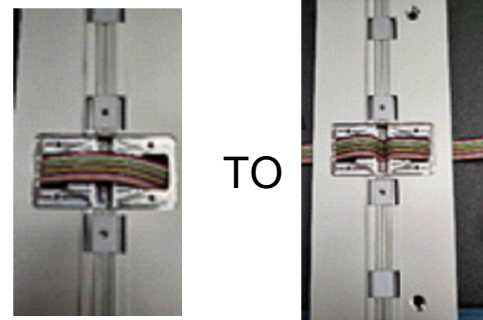
Installation of New Wire Ribbon

All wire connections must follow local codes and/or ABH Manufacturing's Minimum Requirements to ensure proper and lasting connections**

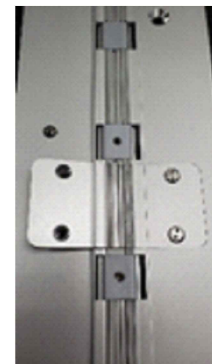
****ABH requires the use of wire nuts and electrical tape or Crimp Connectors when connecting wires to their source or supplied EZ Connectors**

1. Connect wire to the power source (FRAME SIDE) and pass wires back through hinge and frame opening.
2. Connect wires on DOOR side to electrified hardware and pass wires back through the hinge and door opening.

3. Excess Wire Ribbon should then be folded into the void of the cap.



4. Once wires are properly connected, line up the Thru-Wire Face plate gears and fasten with (4) #6 Spanner Flat Head Screws, making sure the plates sit flush to the face of the hinge leaves.



5. Turn Power back on