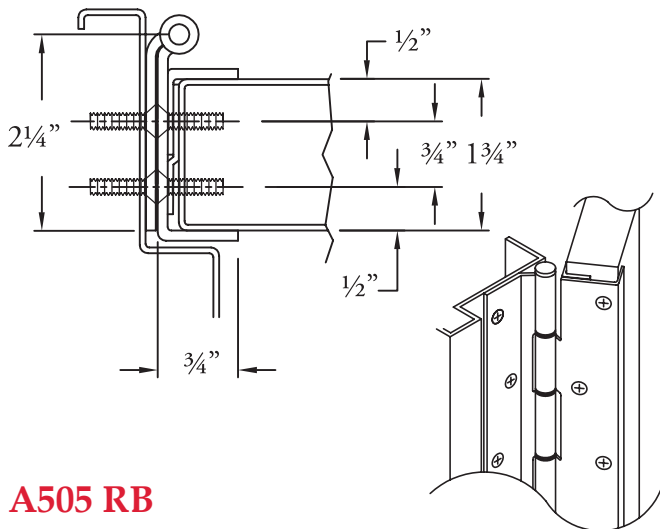


Full Concealed



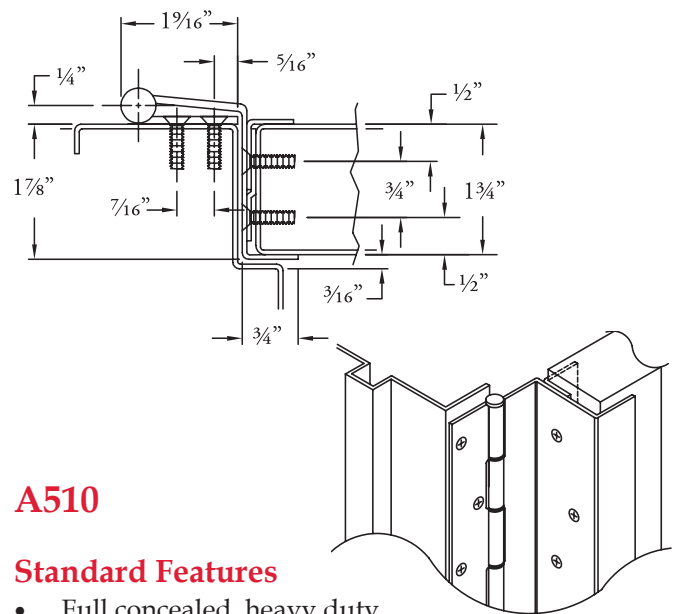
A505 RB

Standard Features

- Raised barrel (swaged) for door set back in deep reveals
- Full concealed, heavy duty
- No door inset, flush mount
- Door edge guard on both faces of door
- 48" door width maximum
- 600 lbs. door weight maximum
- **Fasteners:** 10-24 x 7/8" undercut, self-drilling, thread-forming tek machine screws, stainless steel and #10 x 1-1/4" undercut wood screws, stainless steel
- **Lengths:** 78-3/4", 83-1/8", 85", 95" and 118-3/4"
- **Finishes:** US32D Satin Stainless Steel or US32 Bright Stainless Steel
- **Fire Rating** - tested and certified by UL® (U.S.A. and Canada) on 4'0" x 10'0" doors, based on the following
 - 20 minutes - wood doors
 - 90 minutes - hollow metal and composite core wood fire doors
 - 3 hours - hollow metal doors

Options Available

- See pages G-6 to G-7 for modification availability and details



A510

Standard Features

- Full concealed, heavy duty
- No door inset, flush mount
- Swing clear application
- Door edge guard on both faces of door
- 48" door width maximum
- 600 lbs. door weight maximum
- **Fasteners:** 10-24 x 7/8" undercut, self-drilling, thread-forming tek machine screws, stainless steel and #10 x 1-1/4" undercut wood screws, stainless steel
- **Lengths:** 78-3/4", 83-1/8", 85", 95" and 118-3/4"
- **Finishes:** US32D Satin Stainless Steel or US32 Bright Stainless Steel
- **Fire Rating** - tested and certified by UL® (U.S.A. and Canada) on 4'0" x 10'0" fire rated doors, based on the following
 - 20 minutes - wood doors
 - 90 minutes - hollow metal and composite core wood fire doors
 - 3 hours - hollow metal doors



Options Available

- See pages G-6 to G-7 for modification availability and details



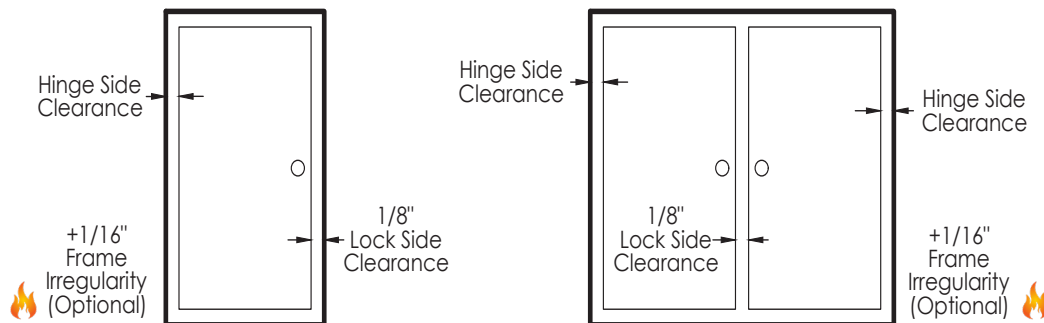
Stainless Steel Continuous Pin & Barrel Hinges

Door Clearance Chart

Single Door- Square Edged							
HINGE MODEL	HINGE SIDE CLEARANCE (Single)	+	LOCK SIDE CLEARANCE	+	***FRAME IRREGULARITY (OPTIONAL) 	=	SINGLE DOOR TOTAL UNDERSIZE
A500*, A500RB, A510**, A515, A515RB, A525, A529, AC500*	1/4"	+	1/8"	+	1/16"	=	7/16"
A505**, A505RB**, A526**, A5500*, A5515, A5505	5/16"	+	1/8"	+	1/16"	=	1/2"
A503, A504*, A506, A511	1/8"	+	1/8"	+	1/16"	=	5/16"
A502	3/32"	+	1/8"	+	1/16"	=	9/32"
Pairs of Doors- Square Edged							
HINGE MODEL	HINGE SIDE CLEARANCE (Pair)	+	LOCK SIDE CLEARANCE	+	***FRAME IRREGULARITY (OPTIONAL) 	=	PAIR OF DOORS TOTAL UNDERSIZE
A500*, A500RB, A510**, A515, A515RB, A529, AC500*	1/2"	+	1/8"	+	1/16"	=	11/16"
A505**, A505RB**, A526**, A5500*, A5515, A5505	5/8"	+	1/8"	+	1/16"	=	13/16"
A503, A504*, A506, A511	1/4"	+	1/8"	+	1/16"	=	7/16"
A502	3/16"	+	1/8"	+	1/16"	=	3/8"

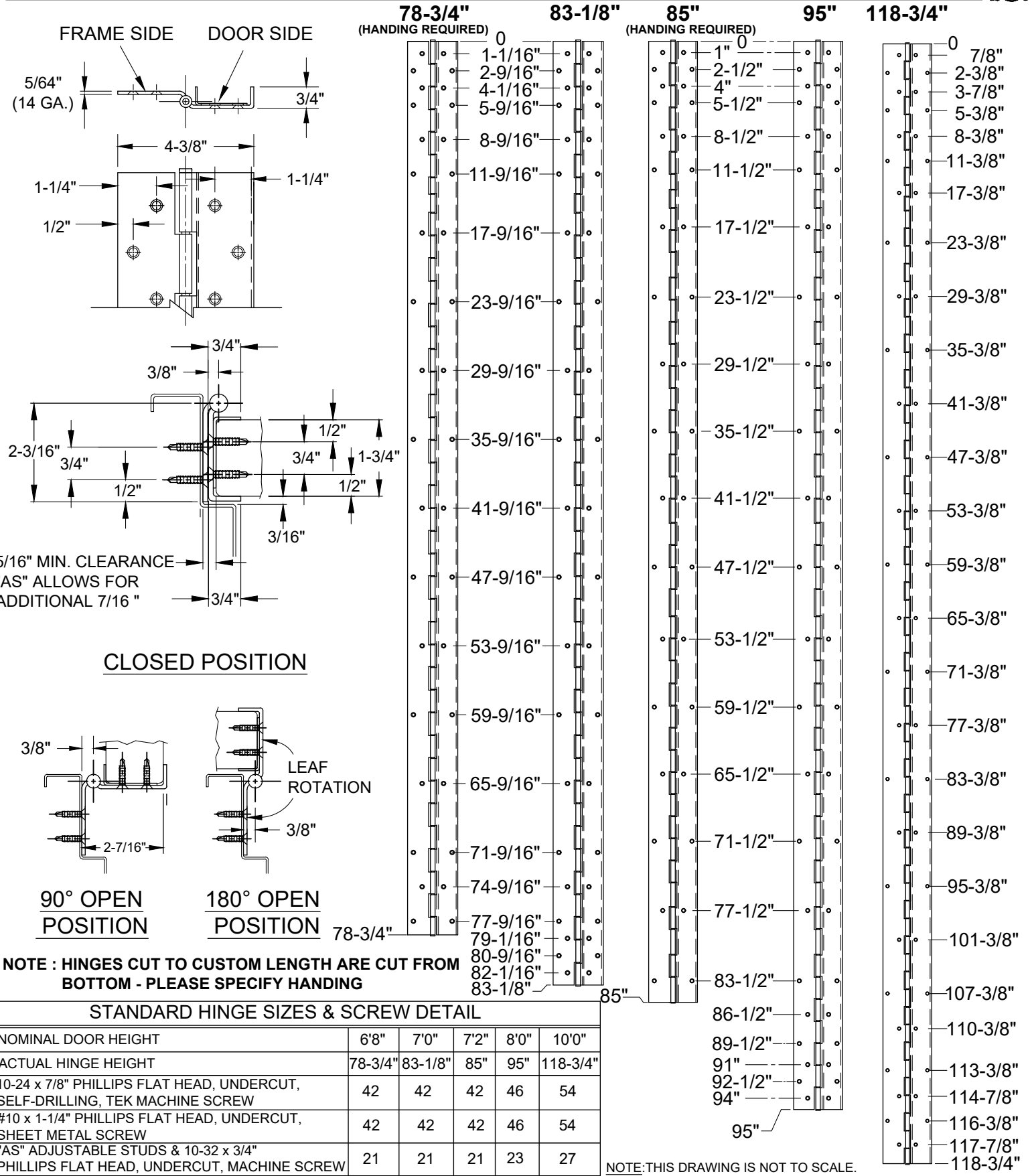
Single Door

Pair of Doors



* For beveled door, standard clearance is applied to the high side of the door. Refer to template.
 ** When using the optional "AS" Adjustable Studs, add 1/8" additional for adjustment clearance. (A505, A510 & A526 Only)
 *** 1/16" Frame Irregularity Allowance, Optional and included in all Total Door Undersize for single and pairs of doors

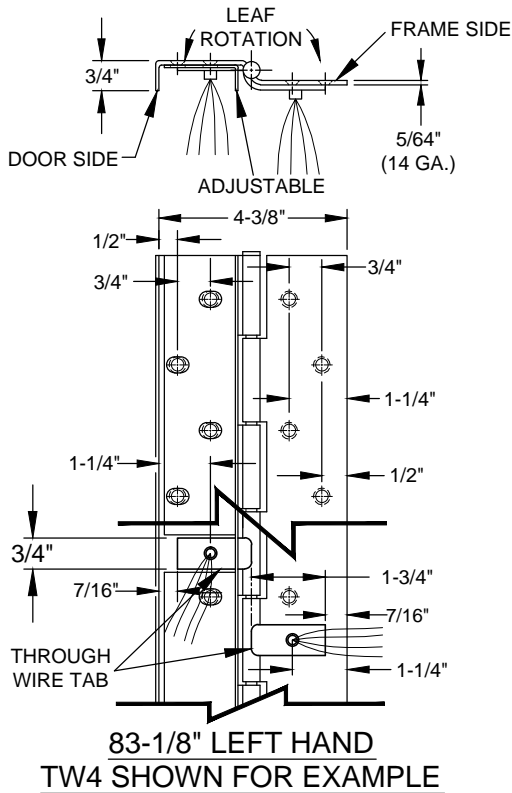
A505RB - STAINLESS STEEL HINGE, WITH EDGE GUARD, RAISED BARREL



www.abhmf.com
E-mail: abhinfo@abhmf.com
Architectural Builders Hardware Mfg., Inc.
1222 Ardmore Ave., Itasca, IL 60143
630.875.9900; FAX 800.9FAXABH (932.9224)

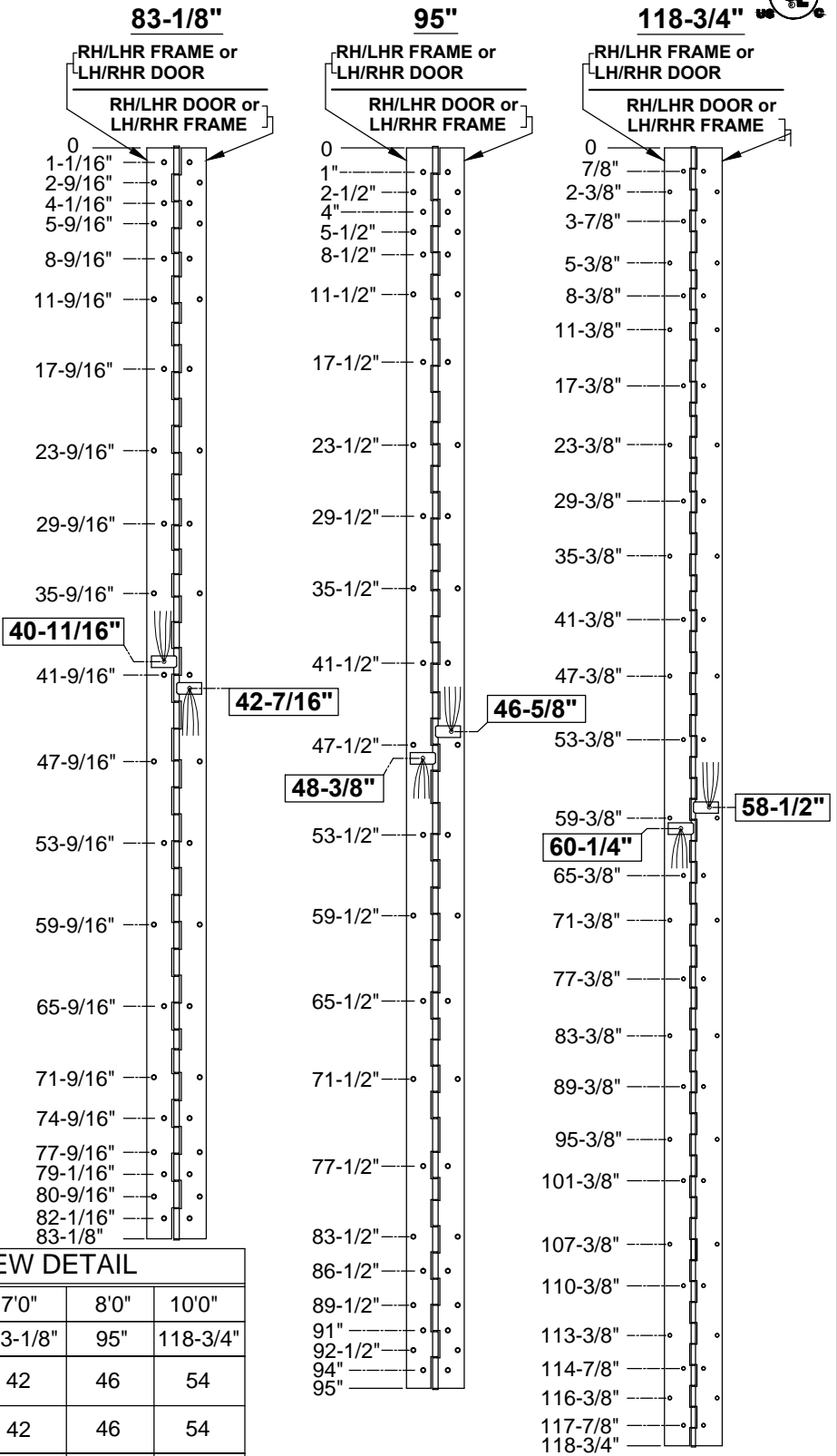
A505RB-STAINLESS STEEL HINGE-02.DWG
A505RB
STAINLESS STEEL HINGE
© 2022 ABH Mfg., Inc.
printed in USA
PAGE 1 OF 1
REVISED 02-04-22

A505RB - "TW" or "EZ" OPTION, RAISED BARREL, CONCEALED ELECTRIFICATION, FULL CONCEALED, DUAL EDGE GUARD, STAINLESS STEEL HINGE



NOTES:

- HINGES CUT TO CUSTOM LENGTH ARE CUT FROM BOTTOM OF HINGE.
- SPECIFY HANDING WHEN ORDERING.
- SPECIFY WIRE CONFIGURATION WHEN ORDERING, TEMPLATE REMAINS THE SAME.
 - CT4
 - CT8
 - CT12
 - CT4 x EZ *
 - CT8 x EZ *
 - CT12 x EZ *
- IF "M" OPTION (MOVEABLE PANEL) IS CHOSEN, TEMPLATE REMAINS THE SAME.
- 30 AWG WIRES, APPROX. 4" LONG PER SIDE, RATED 2 AMP CONTINUOUS LOW VOLTAGE.
- THRU WIRE LOCATION DIMENSIONS +/- 1/16".



STANDARD HINGE SIZES & SCREW DETAIL

NOMINAL DOOR HEIGHT	7'0"	8'0"	10'0"
ACTUAL HINGE HEIGHT	83-1/8"	95"	118-3/4"
10-24 x 7/8" PHILLIPS FLAT HEAD, UNDERCUT, SELF-DRILLING MACHINE SCREW	42	46	54
#10 x 1-1/4" PHILLIPS FLAT HEAD, UNDERCUT, SHEET METAL SCREW	42	46	54
"AS" ADJUSTABLE STUDS & 10-32 x 3/4" PHILLIPS FLAT HEAD, UNDERCUT, MACHINE SCREW	21	23	27

THIS DRAWING IS NOT TO SCALE.

A505RB-TW or EZ OPTION, CONCEALED ELECTRIFICATION-1-01.DWG



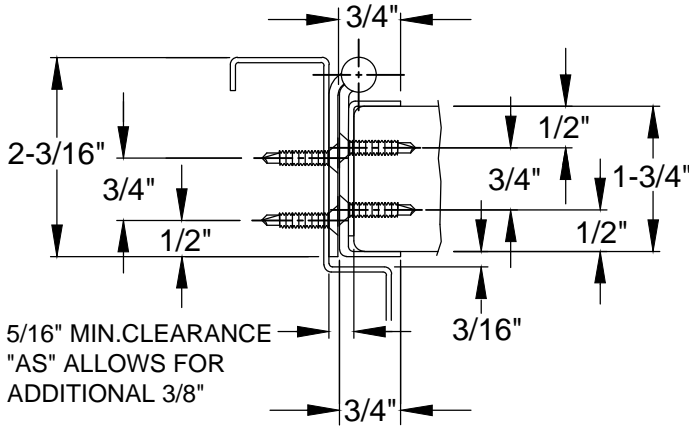
www.abhmfg.com
E-mail: abhinfo@abhmfg.com
Architectural Builders Hardware Mfg., Inc.
1222 Ardmore Ave., Itasca, IL 60143
630.875.9900; FAX 800.9FAXABH (932.9224)

**A505RB - "TW" or "EZ" OPTION
CONCEALED ELECTRIFICATION**

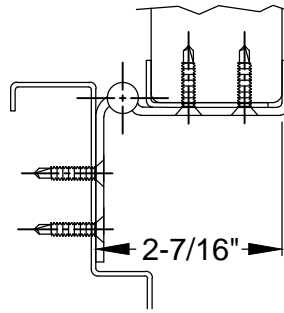
© 2018 ABH Mfg., Inc.
printed in USA

PAGE 1 OF 2
REVISED 11-14-16

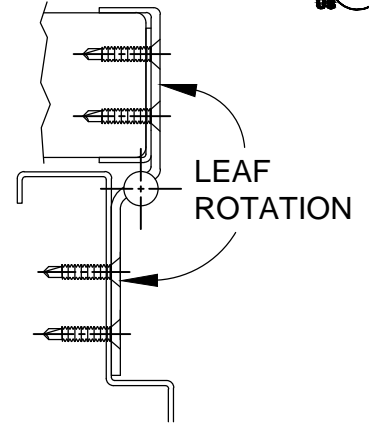
A505RB - "TW" or "EZ" OPTION, RAISED BARREL, CONCEALED ELECTRIFICATION, FULL CONCEALED, DUAL EDGE GUARD, STAINLESS STEEL HINGE



CLOSED POSITION
(WIRES NOT SHOWN)

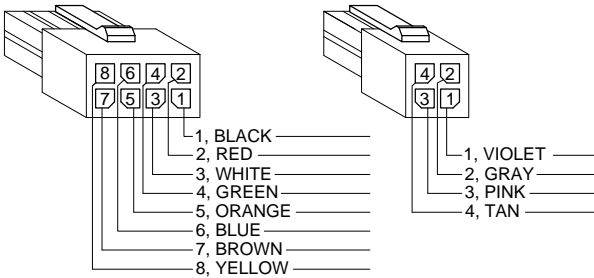


90° OPEN POSITION
(WIRES NOT SHOWN)

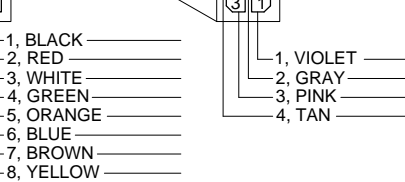


180° OPEN POSITION
(WIRES NOT SHOWN)

EZ CONNECT OPTION



- 1, BLACK
 - 2, RED
 - 3, WHITE
 - 4, GREEN
 - 5, ORANGE
 - 6, BLUE
 - 7, BROWN
 - 8, YELLOW
- 1, VIOLET
 - 2, GRAY
 - 3, PINK
 - 4, TAN



DRILL 1/2" DIA.
FOR WIRE
CLEARANCE
FOR WOOD
DOORS

1-5/8" FROM
EDGE OF DOOR
1/8" DEEP

**83-1/8" LEFT HAND
SHOWN FOR EXAMPLE**

DIMENSION
DEPENDS
ON DOOR
EDGE LENGTH
& INSET

2-3/16" MIN.

1-1/4"
CUTOUT

1/8" DEEP
MIN.

A505RB-TW or EZ OPTION, CONCEALED ELECTRIFICATION-2-01.DWG



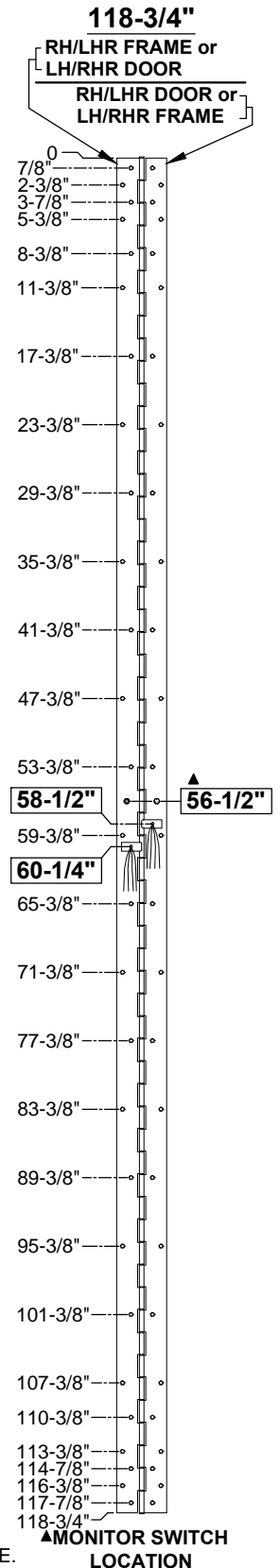
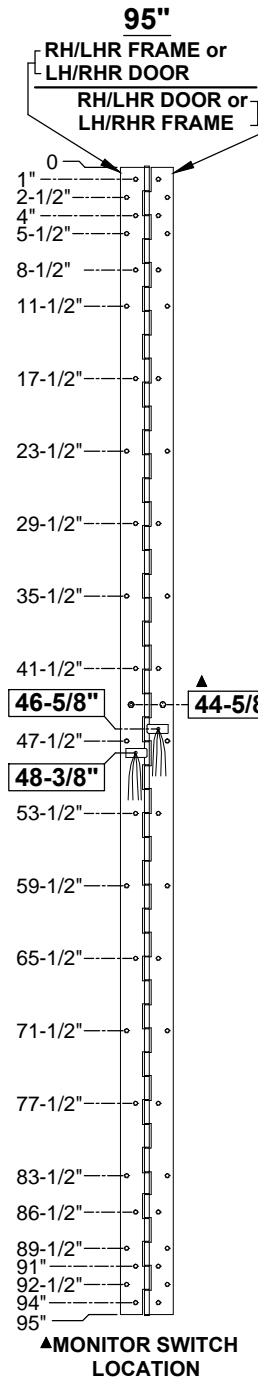
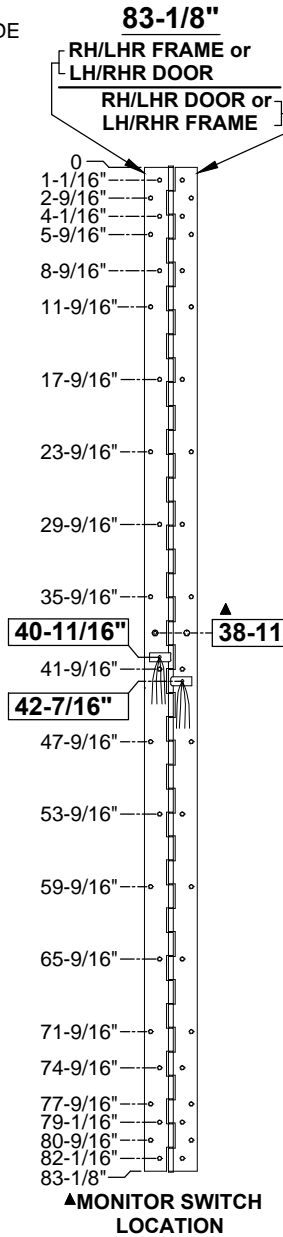
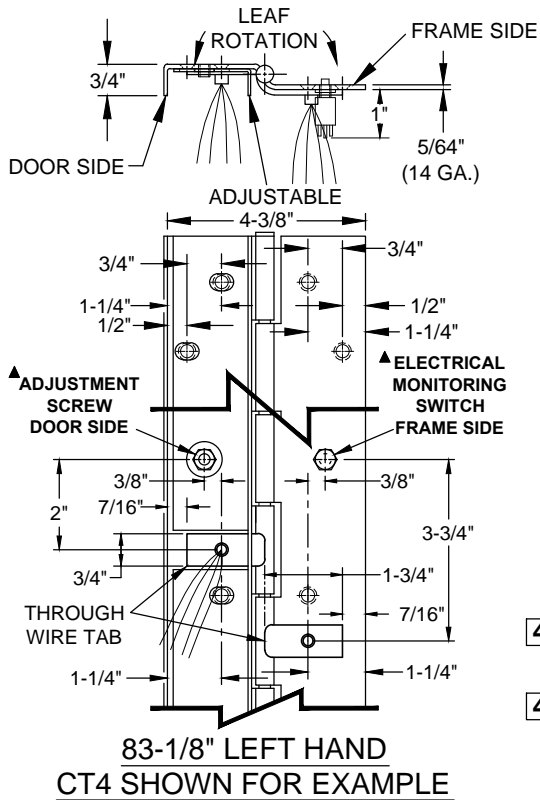
www.abhmfg.com
E-mail: abhinfo@abhmfg.com
Architectural Builders Hardware Mfg., Inc.
1222 Ardmore Ave., Itasca, IL 60143
630.875.9900; FAX 800.9FAXABH (932.9224)

**A505RB - "TW" or "EZ" OPTION
CONCEALED ELECTRIFICATION**

© 2018 ABH Mfg., Inc.
printed in USA

PAGE 2 OF 2
REVISED 11-14-16

A505RB - "CT" OPTION, RAISED BARREL, THRU WIRE & MONITOR SWITCH, FULL CONCEALED, DUAL EDGE GUARD, STAINLESS STEEL HINGE



NOTES:

1. HINGES CUT TO CUSTOM LENGTH ARE CUT FROM BOTTOM OF HINGE.
2. SPECIFY HANDING WHEN ORDERING.
3. SPECIFY WIRE CONFIGURATION WHEN ORDERING, TEMPLATE REMAINS THE SAME.
 - CT4 • CT4 x EZ *
 - CT8 • CT8 x EZ *
 - CT12 • CT12 x EZ *
- * SPECIFY ELECTRIFIED HARDWARE MANUFACTURER FOR CONNECTOR COMPATILITY
4. IF "M" OPTION (MOVEABLE PANEL) IS CHOSEN, TEMPLATE REMAINS THE SAME.
5. 30 AWG WIRES, APPROX. 4" LONG PER SIDE, RATED 2 AMP CONTINUOUS LOW VOLTAGE.
6. THRU WIRE & MONITOR SWITCH LOCATION DIMENSIONS +/- 1/16".

STANDARD HINGE SIZES & SCREW DETAIL			
NOMINAL DOOR HEIGHT	7'0"	8'0"	10'0"
ACTUAL HINGE HEIGHT	83-1/8"	95"	118-3/4"
10-24 x 7/8" PHILLIPS FLAT HEAD, UNDERCUT, SELF-DRILLING MACHINE SCREW	42	46	54
#10 x 1-1/4" PHILLIPS FLAT HEAD, UNDERCUT, SHEET METAL SCREW	42	46	54
"AS" ADJUSTABLE STUDS & 10-32 x 3/4" PHILLIPS FLAT HEAD, UNDERCUT, MACHINE SCREW	21	23	27

THIS DRAWING IS NOT TO SCALE.

A505RB-CT OPTION, THRU WIRE & MONITOR SWITCH-1-01.DWG



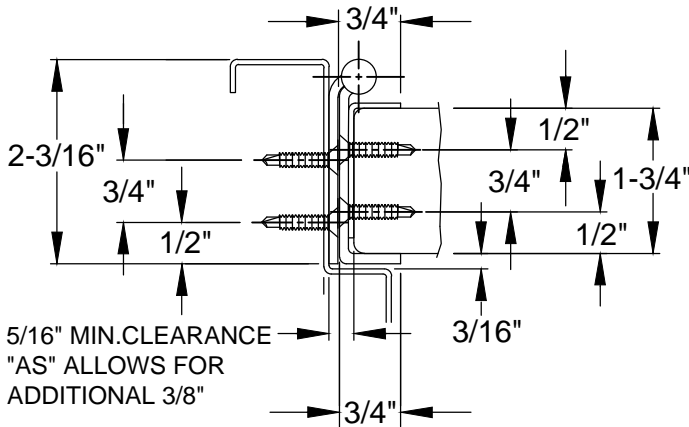
www.abhmfg.com
 E-mail: abhinfo@abhmfg.com
 Architectural Builders Hardware Mfg., Inc.
 1222 Ardmore Ave., Itasca, IL 60143
 630.875.9900; FAX 800.9FAXABH (932.9224)

A505RB - "CT" OPTION
 THRU WIRE & MONITOR SWITCH

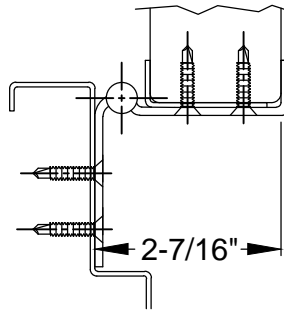
© 2018 ABH Mfg., Inc.
 printed in USA

PAGE 1 OF 2
 REVISED 11-14-16

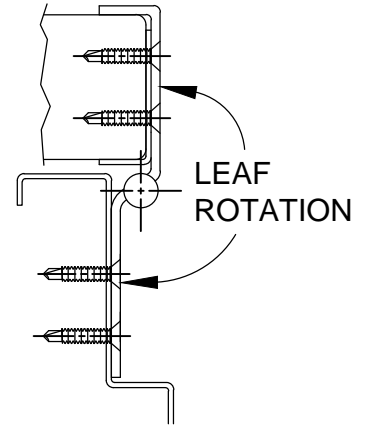
A505RB - "CT" OPTION, RAISED BARREL, THRU WIRE & MONITOR SWITCH, FULL CONCEALED, DUAL EDGE GUARD, STAINLESS STEEL HINGE



CLOSED POSITION
(WIRES NOT SHOWN)

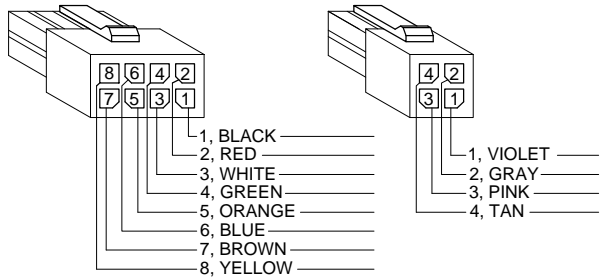


90° OPEN POSITION
(WIRES NOT SHOWN)

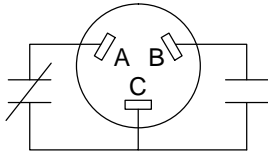


180° OPEN POSITION
(WIRES NOT SHOWN)

EZ CONNECT OPTION



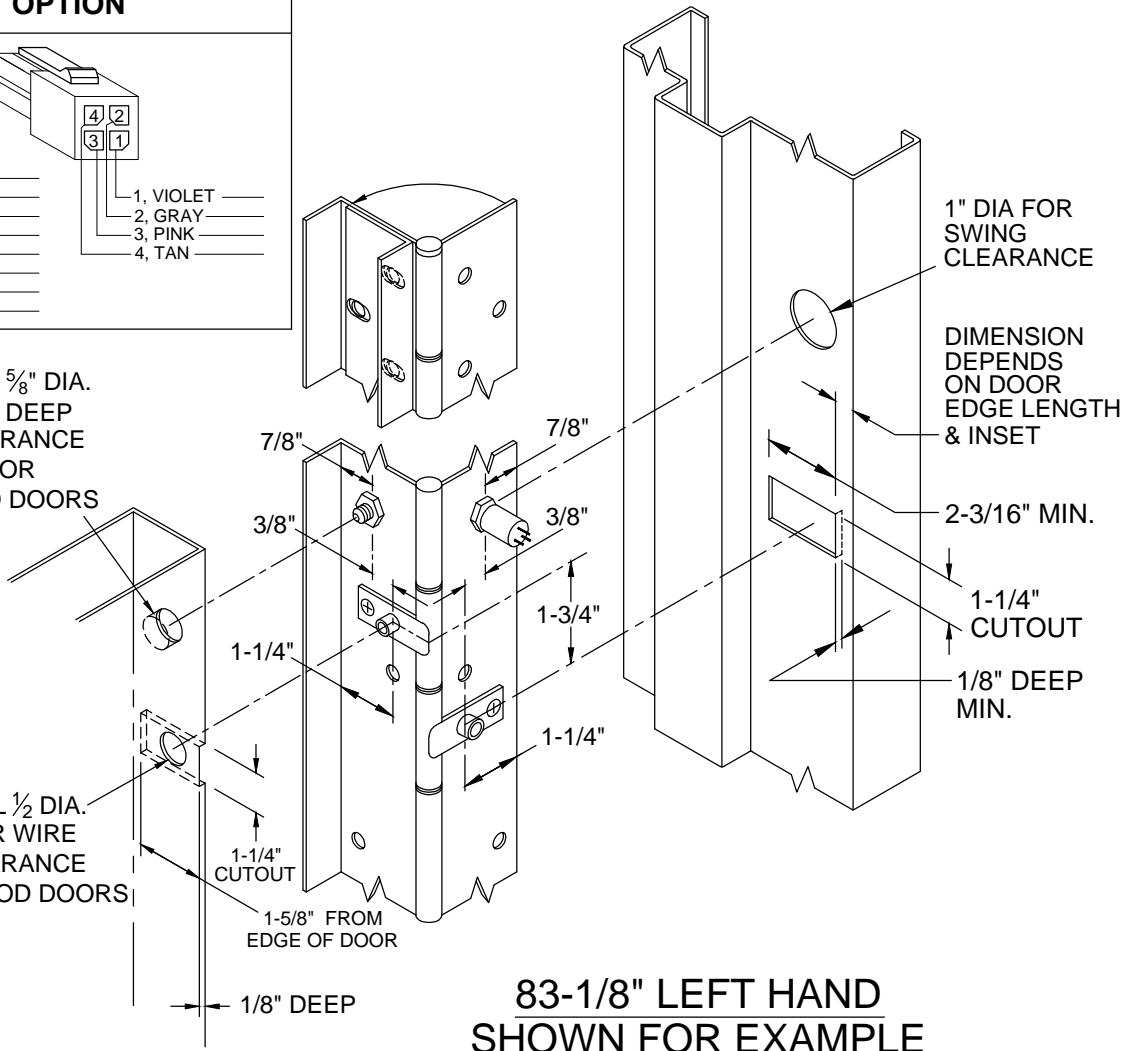
SWITCH SCHEMATIC



A & C = NORMALLY CLOSED
B & C = NORMALLY OPEN

DRILL 5/8" DIA.
x 3/8" DEEP
CLEARANCE
FOR
WOOD DOORS

DRILL 1/2" DIA.
FOR WIRE
CLEARANCE
FOR WOOD DOORS



**83-1/8" LEFT HAND
SHOWN FOR EXAMPLE**

A505RB-CT OPTION, THRU WIRE & MONITOR SWITCH-2-01.DWG



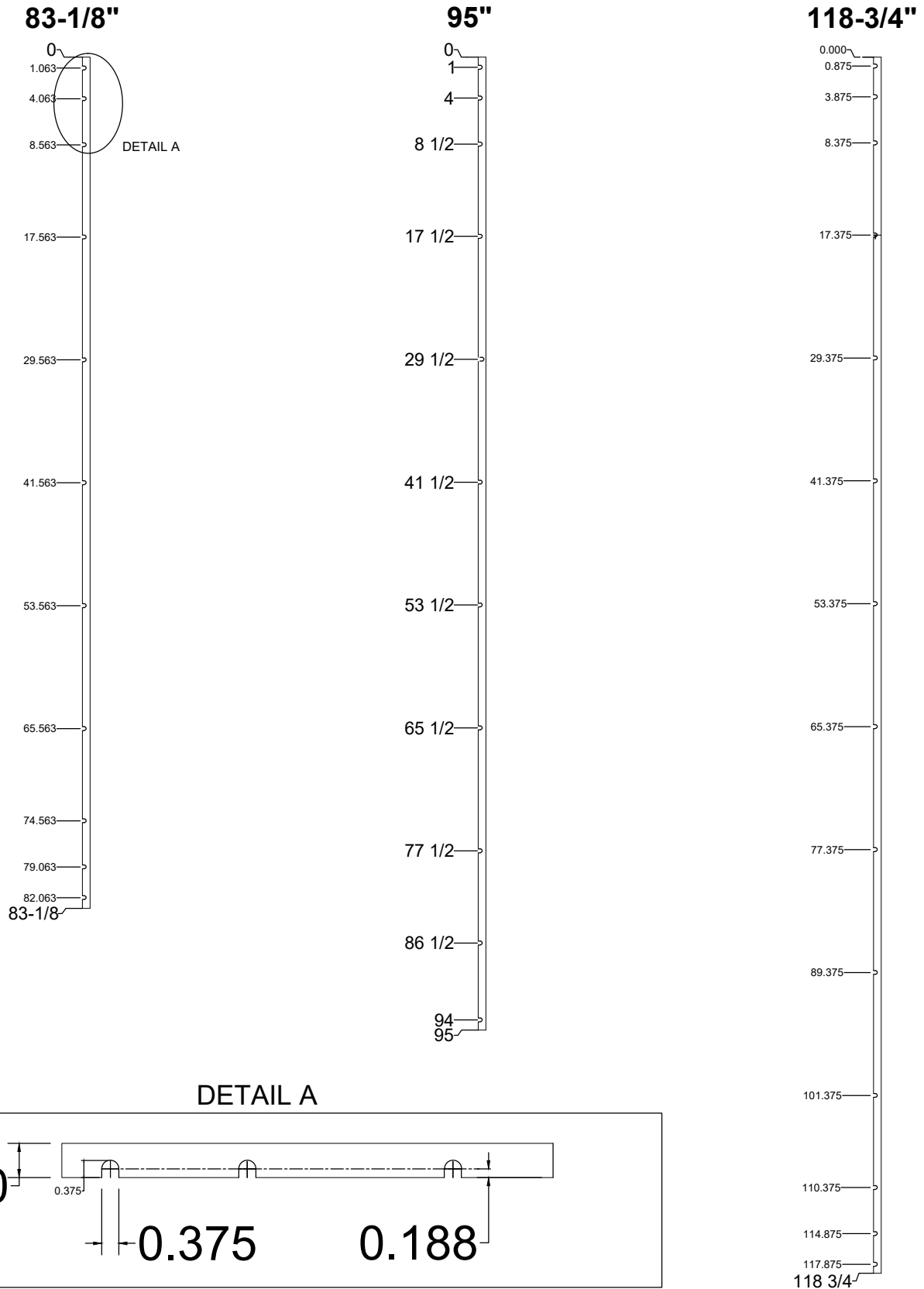
www.abhmfg.com
E-mail: abhinfo@abhmfg.com
Architectural Builders Hardware Mfg., Inc.
1222 Ardmore Ave., Itasca, IL 60143
630.875.9900; FAX 800.9FAXABH (932.9224)

**A505RB - "CT" OPTION
THRU WIRE & MONITOR SWITCH**

© 2018 ABH Mfg., Inc.
printed in USA

PAGE 2 OF 2
REVISED 11-14-16

CHS-1, SLIP-IN, 16GA. (1/16") STAINLESS STEEL SHIM



CHS-1-SLIP-IN SHIM-00.DWG



www.abhmf.com
E-mail: abhinfo@abhmf.com
Architectural Builders Hardware Mfg., Inc.
1222 Ardmore Ave., Itasca, IL 60143
630.875.9900; FAX 800.9FAXABH (932.9224)

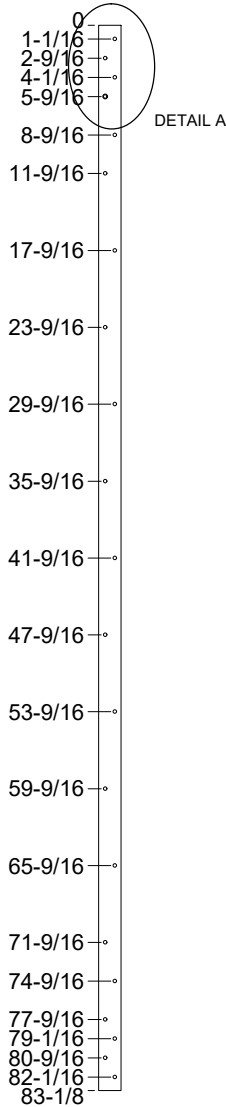
© 2020 ABH Mfg., Inc.
printed in USA

CHS-1
SLIP-IN SHIM

PAGE 1 OF 1
ISSUED 06-03-20

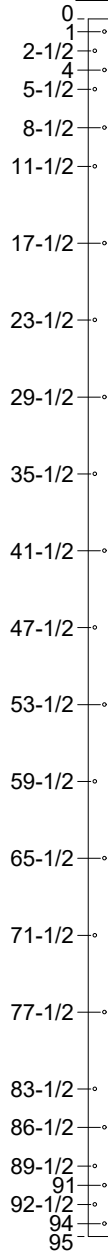
CHS-2, 16GA. STAINLESS STEEL SHIM

83-1/8"

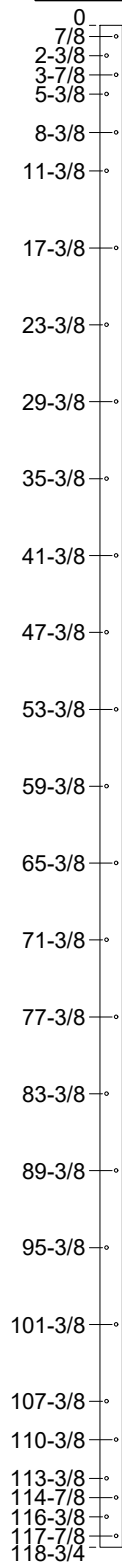


DETAIL A

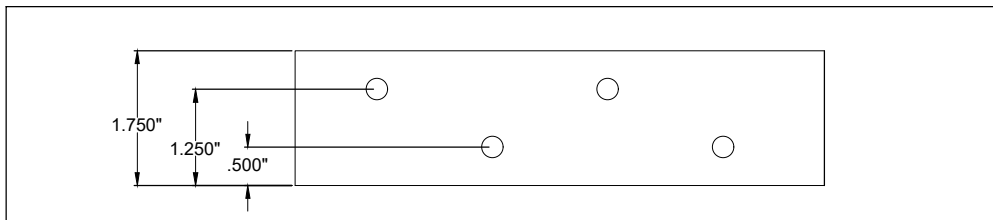
95"



118-3/4"



DETAIL A



MATERIAL: .063 STAINLESS STEEL



www.abhmfg.com
E-mail: abhinfo@abhmfg.com
Architectural Builders Hardware Mfg., Inc.
1222 Ardmore Ave., Itasca, IL 60143
630.875.9900; FAX 800.9FAXABH (932.9224)

© 2020 ABH Mfg., Inc.
printed in USA

CHS-2- SHIM-00.DWG

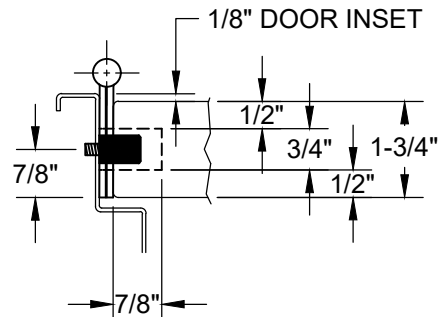
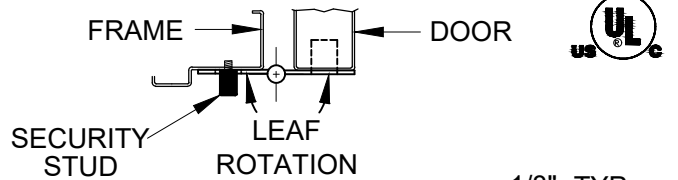
CHS-2
SHIM

PAGE 1 OF 1
ISSUED 08-03-20

SECURITY "STUD" FOR FULL CONCEALED STAINLESS STEEL HINGES 14 & 12 GA.



DIMENSION					
"A" HINGE LENGTH	78-3/4"	83-1/8"	85"	95"	118-3/4"
"B"	14-1/2"	14-1/2"	14-1/2"	14-1/2"	14-1/2"
"C"	39-3/8"	38"	32-1/2"	32-1/2"	44-1/2"
"D"	64-1/4"	68-5/8"	62-1/2"	62-1/2"	74-1/4"
"E"	-----	-----	80-1/2"	80-1/2"	104-1/4"

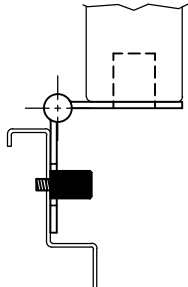


7/8" FROM CENTER OF HOLE TO EDGE OF HINGE

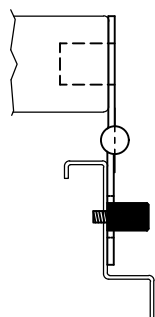
DRILL & TAP IN FRAME 12-24

DRILL 3/4" DIA. HOLE IN DOOR

CLOSED POSITION
(A500 HINGE & STUD SHOWN, FOR EXAMPLE)

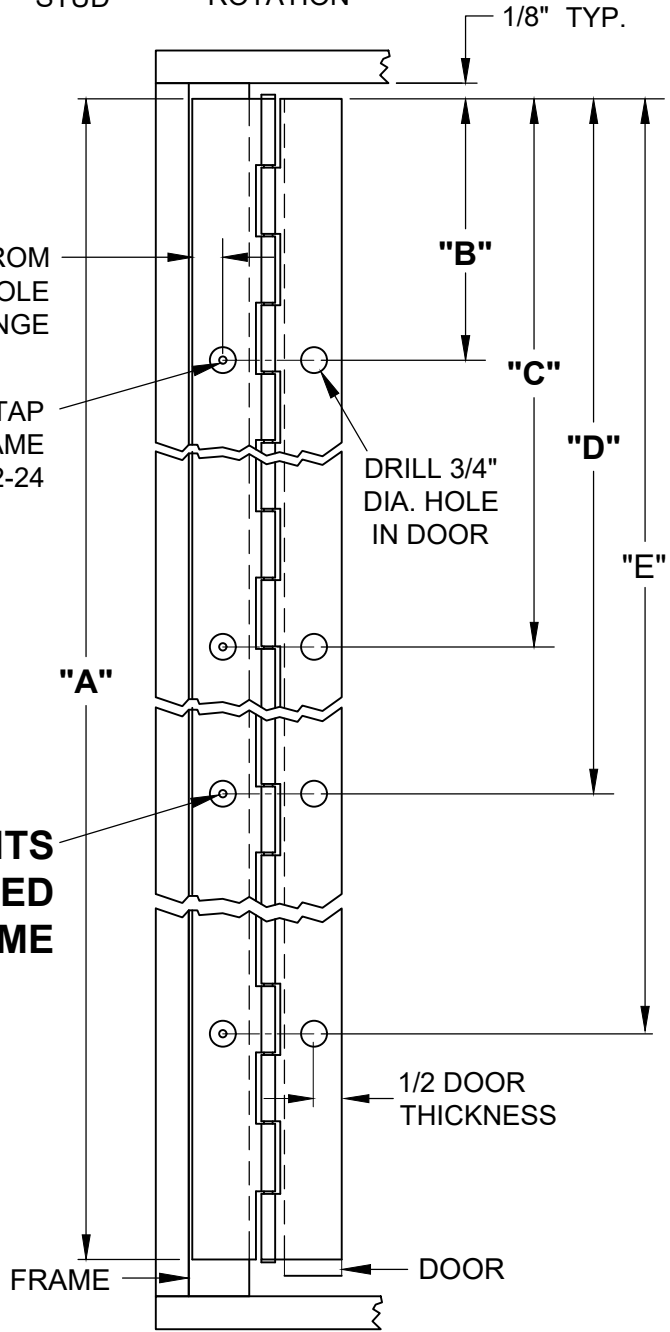


90° OPEN POSITION
(A500 HINGE & STUD SHOWN, FOR EXAMPLE)



180° OPEN POSITION
(A500 HINGE & STUD SHOWN, FOR EXAMPLE)

FIRE STUD MOUNTS ONTO THE THREADED FRAME



FRONT VIEW
FOR SECURITY STUD LOCATION
MODEL A500 HINGE SHOWN FOR EXAMPLE

ALL HINGES ARE HANDED



www.abhmfg.com
E-mail: abhinfo@abhmfg.com
Architectural Builders Hardware Mfg., Inc.
1222 Ardmore Ave., Itasca, IL 60143
630.875.9900; FAX 800.9FAXABH (932.9224)

FC SECURITY STUD LOCATION SS-05.DWG
**FULL CONCEALED
SECURITY STUD
LOCATION INSTRUCTIONS**
© 2020 ABH Mfg., Inc.
printed in USA
ISSUED 10-21-20