



Flush Bolts, Surface Bolts, Coordinators



TABLE OF CONTENTS

| | |
|---|------|
| FLUSH BOLTS..... | 2-6 |
| CROSS REFERENCE TABLE, FLUSH BOLTS | 6 |
| SURFACE BOLTS | 7 |
| COORDINATORS..... | 8-10 |
| CROSS REFERENCE TABLE, COORDINATORS | 10 |
| FINISHES..... | 11 |

FLUSH BOLTS

93170 Series Manual Flush Bolts For Hollow Metal Doors

FEATURES:

- Compatible with ANSI/BHMA 156.115 door and frame prep
- 3/4" slide bolt throw, 3/4" backset.
- 12" rod length (center of face to bolt end - retracted).
- 1-1/2" adjustable slide bolt.
- PDQ # 909 Dust Proof Strike recommended to prevent dirt from accumulating and clogging the bottom strike (ordered separately)

SPECIFICATIONS:

- | | |
|-----------------------|---|
| BASE MATERIAL: | • Brass and steel |
| FASTENERS: | • 16 ea. #8 x 3/4" FH combo screws. |
| FACE PLATE: | • 1" x 6-3/4" |
| STRIKE: | • 15/16" x 2-1/4" |
| GUIDE: | • 1" x 2", |
| FINISHES: | • 605 (US3) Bright Brass, 613 (US10B) Oil Rubbed Bronze, 626 (US26D) Satin Chrome |
- CERTIFICATIONS, LISTINGS,**
- COMPLIANCES:**
- UL/CUL listed for metal swing doors, 4'x8', 3 hrs
 - Complies with ANSI/BHMA A156.16, Type L04251
 - Meets requirements of Buy American Act



93270 Series Manual Flush Bolts For Composite Wood Doors

FEATURES:

- Compatible with ANSI/BHMA 156.116W.
- Corner reinforcing plate.
- 3/4" slide bolt throw, 3/4" backset.
- 12" rod length (center of face to bolt end - retracted).
- 1-1/2" adjustable slide bolt.
- PDQ # 909 Dust Proof Strike recommended to prevent dirt from accumulating and clogging the bottom strike (ordered separately)

SPECIFICATIONS:

- | | |
|-----------------------|---|
| BASE MATERIAL: | • Brass and Steel |
| FASTENERS: | • 7 ea. #8 x 3/4" FH combo screws, 2 ea. #8-32 x 1/4" FH MS. |
| FACE PLATE: | • 1" x 6-3/4" |
| STRIKE: | • 15/16" x 2-1/4" |
| GUIDE: | • 1" x 2", |
| FINISHES: | • 605 (US3) Bright Brass, 613 (US10B) Oil Rubbed Bronze, 626 (US26D) Satin Chrome |
- CERTIFICATIONS, LISTINGS,**
- COMPLIANCES:**
- UL/CUL listed for hollow composite wood swing doors, 4'x8', 1-1/2 hrs
 - Complies with ANSI/BHMA156.16, Type L04261
 - Meets requirements of Buy American Act



93101 Series Automatic Flush Bolts For Hollow Metal Doors



FEATURES:

- Easy closing force.
- Non-handed.
- Fully automatic— opening active door retracts top and bottom bolts.
- Override feature prevents damage to doors or bolts if bolt heads are blocked from entering strikes.
- Rods are adjustable up to 1-1/2".
- Fusible link automatically locks the inactive door under high heat conditions due to fire
- PDQ # 909 Dust Proof Strike recommended to prevent dirt from accumulating and clogging the bottom strike (ordered separately)

SPECIFICATIONS:

- | | |
|----------------------------------|--|
| BASE MATERIAL: | • Brass and Steel |
| FASTENERS: | • 16 ea. #8 x 3/4" FH combo screws, 4 ea. #8-32 x 3/8" FH MS. |
| FINISHES: | • 605 (US3) Bright Brass, 613 (US10B) Oil Rubbed Bronze, 626 (US26D) Satin Chrome |
| CERTIFICATIONS, LISTINGS, | |
| COMPLIANCES: | • UL/CUL 10C listed for hollow labeled hollow metal swing doors, 4' x 8', 3-1/2 hrs • Complies with ANSI/BHMA156.3, Type 25 • Meets requirements of Buy American Act |



93102 Series Self-latching Automatic Flush Bolts For Hollow Metal Doors



FEATURES:

- Easy closing force.
- Top bolt automatically engages when the inactive door closes. Bottom latch on the inactive door automatically engages when the active door is closed. When the active door is opened, the bottom latch on the inactive door automatically retracts. The inactive door stays latched at the top until the top bolt is retracted by depressing the release button on the bolt face.
- Non-handed.
- Override feature prevents damage to doors or bolts if bolt heads are blocked from entering strikes.
- Bolt head rod is adjustable up to 1-1/2".
- Fusible link automatically locks the inactive door under high heat conditions due to fire
- PDQ # 909 Dust Proof Strike recommended to prevent dirt from accumulating and clogging the bottom strike (ordered separately)

SPECIFICATIONS:

- | | |
|----------------------------------|--|
| BASE MATERIAL: | • Brass and Steel |
| FASTENERS: | • 16 ea. #8 x 3/4" FH combo screws, 4 ea. #8-32 x 3/8" FH MS. |
| FINISHES: | • 605 (US3) Bright Brass, 613 (US10B) Oil Rubbed Bronze, 626 (US26D) Satin Chrome |
| CERTIFICATIONS, LISTINGS, | |
| COMPLIANCES: | • UL/CUL 10C listed for hollow labeled hollow metal swing doors, 4' x 8', 3-1/2 hrs • Complies with ANSI/BHMA A156.16 Type 27 (Formerly included in A156.3) • Meets requirements of Buy American Act |



Release Button

93103 Series Automatic Flush Bolt with Bottom Fire Bolt for Hollow Metal Doors

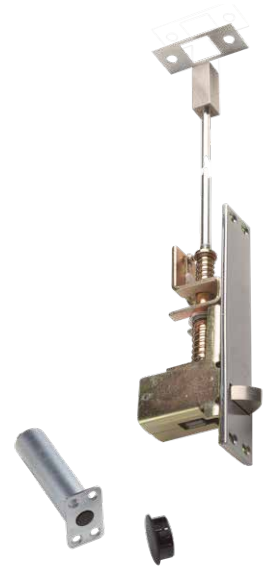


FEATURES:

- Low (5lbs maximum) closing force.
- Fully automatic—opening active door retracts top bolt.
- Override feature prevents damage to doors or bolt if bolt head is blocked from entering strike.
- Bolt head rod is adjustable up to 1-1/2".
- Includes PDQ #629030 Fire Bolt automatically locks the inactive door under high heat conditions due to fire.
- Bottom fire bolt eliminates need for floor prep.

SPECIFICATIONS:

| | |
|----------------------------------|---|
| BASE MATERIAL: | • Brass and Steel |
| FASTENERS: | • 8 ea. #8 x 3/4" FH combo screws, 2 ea. #8-32 x 3/8" FHMS, 4 ea. 10-32 x 13/16" FH MS (for Fire Bolt). |
| FINISHES: | • 605 (US3) Bright Brass, 613 (US10B) Oil Rubbed Bronze, 626 (US26D) Satin Chrome |
| CERTIFICATIONS, LISTINGS, | |
| COMPLIANCES: | • UL/CUL 10C listed for hollow labeled hollow metal swing doors, 4' x 8', 1-1/2 hrs • Complies with ANSI/BHMA 156.16, Type L04021. • Meets requirements of Buy American Act |



93201 Series Automatic Flush Bolts For Composite Wood Doors



FEATURES:

- Easy Closing Force
- Non-handed.
- Fully automatic — opening active door retracts top and bottom bolts.
- Override feature prevents damage to doors or bolts if bolt heads are blocked from entering strikes.
- Bolt head rods are adjustable up to 1/2".
- Fusible link automatically locks the inactive door under high heat conditions due to fire
- PDQ # 909 Dust Proof Strike recommended to prevent dirt from accumulating and clogging the bottom strike (ordered separately)

SPECIFICATIONS:

| | |
|----------------------------------|--|
| BASE MATERIAL: | • Brass and Steel |
| FASTENERS: | • 12 ea. #8 x 3/4" FH combo screws • 6 ea. #10 x 1" FH WS. • 4 ea. #8 - 32 x 1/4" FH undercut FH MS. |
| FINISHES: | • 605 (US3) Bright Brass, 613 (US10B) Oil Rubbed Bronze, 626 (US26D) Satin Chrome |
| CERTIFICATIONS, LISTINGS, | |
| COMPLIANCES: | • UL/CUL 10C listed for hollow labeled composite wood swing doors, 4' x 8', 1-1/2 hrs • Complies with ANSI/BHMA A156.16 Type 27 (Formerly included in A156.3) • Meets requirements of Buy American Act |



93202 Series Self-latching Automatic Flush Bolts For Composite Wood Doors



FEATURES:

- Easy closing force
- Top bolt automatically engages when the inactive door closes. Bottom latch on the inactive door automatically engages when the active door is closed. When the active door is opened, the bottom latch on the inactive door automatically retracts. The inactive door stays latched at the top until the top bolt is released by pressing the release button on the bolt face.
- Non-handed.
- Override feature prevents damage to door or bolt if bolt head is blocked from entering strike.
- Rod is adjustable up to 1/2".
- PDQ # 909 Dust Proof Strike recommended to prevent dirt from accumulating and clogging the bottom strike (ordered separately)

SPECIFICATIONS:

- BASE MATERIAL:** • Brass and Steel
- FASTENERS:** • 12 ea. #8 x 3/4" FH combo screws.
• 4 ea. #8 - 32 x 1/4" FH MS.
• 6 ea. #10 x 1" FH WS.
- FINISHES:** • 605 (US3) Bright Brass, 613 (US10B) Oil Rubbed Bronze, 626 (US26D) Satin Chrome
- CERTIFICATIONS, LISTINGS, COMPLIANCES:** • UL/CUL 10C listed for hollow labeled composite wood swing doors, 4' x 8', 1-1/2 hrs
• Complies with ANSI/BHMA A156.16 Type 27 (Formerly included in A156.3)
• Meets requirements of Buy American Act



Release Button

93203 Series Automatic Flush Bolt with Bottom Fire Bolt for Wood Composite Doors



FEATURES:

- Low (5 lbs. maximum) closing force.
- Fully automatic—opening active door retracts top bolt.
- Override feature prevents damage to doors or bolt if bolt head is blocked from entering strike.
- Bolt head rod is adjustable up to 1/2".
- Includes PDQ #629030 Fire Bolt automatically locks the inactive door under high heat conditions due to fire.
- Bottom fire bolt eliminates need for floor prep.
- Oversize fire bolt strike hole allows for slight door misalignment.

SPECIFICATIONS:

- BASE MATERIAL:** • Brass and Steel
- FASTENERS:** • 6 ea. #8 x 3/4" FH combo screws, 2 ea. 8-32 x 1/4" FH MS, 3 ea. #10 x 1" FH WS, 4 ea. #8 x 3/4" WS (for Fire Bolt).
- FINISHES:** • 605 (US3) Bright Brass, 613 (US10B) Oil Rubbed Bronze, 626 (US26D) Satin Chrome
- CERTIFICATIONS, LISTINGS, COMPLIANCES:** • UL/CUL 10C listed for hollow labeled composite wood swing doors, 4' x 8', 20 min
• Complies with ANSI/BHMA156.3, Type 25
• Meets requirements of Buy American Act



909 Series Dust Proof Strike

FEATURES:

- Works with all PDQ manual and automatic flush bolts.
- Removable face plate for use with thresholds.
- Adjustable height for carpeted areas.

SPECIFICATIONS:

- BASE MATERIAL:** • Brass
- FASTENERS:** • Adjustment nut for threshold applications.
• Spanner wrench.
• 2 ea. #8 x 1-3/8" FH PS SMS.
• 2 ea. plastic anchors.
- FINISHES:** • 605 (US3) Bright Brass, 613 (US10B) Oil Rubbed Bronze, 626 (US26D) Satin Chrome
- BARREL:** • 15/16" outer diameter x 2" Depth
- CERTIFICATIONS, LISTINGS, COMPLIANCES:** • Complies with ANSI/BHMA156.16, Type L04021
• Meets requirements of Buy American Act



HOW TO ORDER

| SERIES | |
|---|-----|
| 93170 — MANUAL FLUSH BOLT FOR HOLLOW METAL DOOR 93270 — MANUAL FLUSH BOLT FOR WOOD DOORS 93101 — AUTOMATIC FLUSH BOLTS FOR HOLLOW METAL DOORS 93102 — SELF-LATCHING AUTOMATIC FLUSH BOLTS FOR HOLLOW METAL DOORS 93103 — AUTOMATIC FLUSH BOLT WITH BOTTOM FIRE BOLT FOR HOLLOW METAL DOORS 93201 — AUTOMATIC FLUSH BOLTS FOR WOOD DOORS 93202 — SELF-LATCHING AUTOMATIC FLUSH BOLTS FOR WOOD DOORS 93203 — AUTOMATIC FLUSH BOLT WITH BOTTOM FIRE BOLT FOR WOOD DOORS | |
| 93101 | 626 |
| 605 — BRIGHT BRASS 613 — OIL RUBBED BRONZE 626 — SATIN CHROME | |
| FINISH | |

Ordering Example: 93101 626

 - Denotes factory default

CROSS REFERENCE

| | PDQ | ABH | DCI | HAGER | IVES | ROCKWOOD | TRIMCO |
|-----------------------|-------|-------|----------|-------|-------|----------|------------|
| MANUAL FLUSH BOLTS | | | | | | | |
| HOLLOW METAL | 93170 | 1855S | 780F | 282D | FB458 | 555 | 3917-12 |
| COMPOSITE WOOD | 93270 | 1875S | 790F | 283D | FB358 | 557 | 3913 |
| AUTOMATIC FLUSH BOLTS | | | | | | | |
| HOLLOW METAL | 93101 | 1860P | 842 | 292D | FB31P | 2842 | 3810x3810 |
| | 93102 | — | 845 | 293D | FB51P | 2845 | 3820x3810 |
| | 93103 | — | 805/8BFB | 295M | FB52 | 2848 | 3820x3850 |
| COMPOSITE WOOD | 93201 | 1862P | 942 | 291D | FB41P | 2942 | 3815x3815L |
| | 93202 | — | 945 | 293D | FB61P | 2945 | 3825x3815L |
| | 93203 | — | 960/9BFB | 295W | FB42 | 2948 | 3815x3850 |

ACCESSORIES

629030 Universal Bottom Fire Bolt for Metal and Composite Wood Doors

FEATURES:

- Designed for use with all PDQ manual and automatic flush bolts.
- For fire labeled doors, must be used with PDQ UL fire listed automatic flush bolts to maintain UL listing status and fire code compliance.
- For use in door only.

SPECIFICATIONS:

- BASE MATERIAL:** • Stainless Steel
- FINISHES:** • 630 (US32D)



SURFACE BOLTS

460/461 Series Surface Bolts

SPECIFICATIONS:

MATERIAL: • Steel.

MOUNTING

FASTENERS: • 8 ea. #8 x 1-1/4" FH SMS.

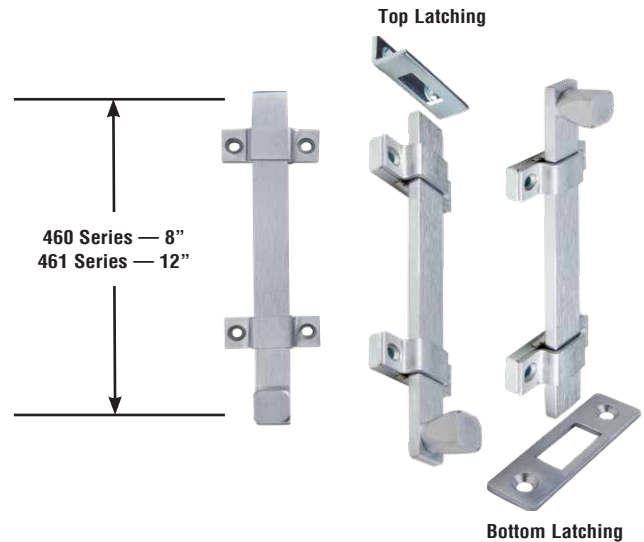
STRIKES: • 1ea. universal top strike, 1ea. mortise bottom strike.

FINISHES: • 626 (US26D) Satin Chrome

CERTIFICATIONS, • Complies with ANSI/BHMA156.16, Type L04151

LISTINGS,

COMPLIANCES:



462 Series Surface Bolt, Concealed Mounting

- Suitable for all types of doors.
- Fully concealed mounting helps guard against vandalism.

SPECIFICATIONS:

DIMENSIONS: • Body: 7/8" W x 8" L x 7/8" D.

- Actuating Knob Projection: 1-1/2"

- Top Strike: 2-1/4" W x 1" H x 15/16"" D.

- Bottom Strike: 3-3/8" W x 1" H x 1/8" Thick

- Steel.

MATERIAL:

SURFACE BOLT

THROW:

• 1".

MOUNTING

FASTENERS: • 5 ea. #12 x 1-1/4" FH PH SMS, 5 ea. 12-24 x 1" FH PH MS,
2 ea. plastic anchors.

- 1ea. universal top strike, 1ea. mortise bottom strike.

- 626 (US26D) Satin Chrome

CERTIFICATIONS, • Complies with ANSI/BHMA156.16, Type L04151

LISTINGS,

COMPLIANCES:



HOW TO ORDER

| SERIES | |
|---|-----|
| 462 — SURFACE BOLT, CONCEALED MOUNTING 461 — SURFACE BOLT, 12" 460 — SURFACE BOLT, 8" | |
| 460 | 626 |
| 626 — SATIN CHROME | |
| FINISH | |

Ordering Example: 460 626

- Denotes factory default

COORDINATORS

COR SERIES COORDINATOR, ANSI TYPE 21A

FEATURES:

- Non-handed.
- Override protection to prevent damage in case of abnormal force on door
- Mechanism and filler bar completely fill width of opening
- Suitable for painting to match door and frame finish



SPECIFICATIONS:

BASE MATERIAL:

- Steel

FASTENERS:

- 8 Ea. 12-24 x 1-1/4 PH PH MS.
- 6 Ea. #8 x 3/4" Combo Screws.
- Strike Plates.

FINISHES:

- 600 (USP) primer

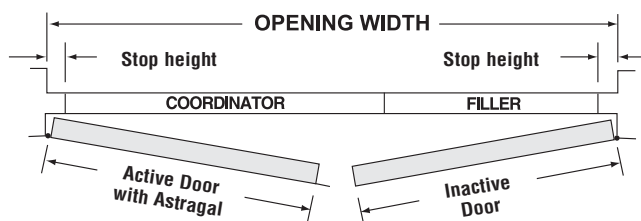
SIZES:

- COR42: 1-5/8W" x 5/8"H x 42L"
- COR52: 1-5/8W" x 5/8"H x 52L"
- COR60: 1-5/8W" x 5/8"H x 60L"

CERTIFICATIONS, LISTINGS, COMPLIANCES:

- UL/CUL 10B and UL/CUL10C listed for 3 hours for use with a pair of swing doors incorporating an astragal
- Complies with ANSI/BHMA156.3 Type 21A
- Meets requirements of Buy American Act

| DOOR OPENING WIDTH | MODEL NUMBER | COORDINATOR PART NUMBER | COORDINATOR LENGTH | FILLER NUMBER | FILLER LENGTH |
|-----------------------|-----------------|----------------------------|-----------------------|------------------|------------------|
| 48"-54" | COORD54 | COR42 | 42" | FB18 | 18" |
| 55"-60" | COORD60 | COR52 | 52" | FB18 | 18" |
| 61"-72" | COORD72 | COR52 | 52" | FB20 | 20" |
| 73"-96" | COORD96 | COR60 | 60" | FB36 | 36" |



NOTE: If stop height dimension is other than 58"
contact PDQ Technical Service

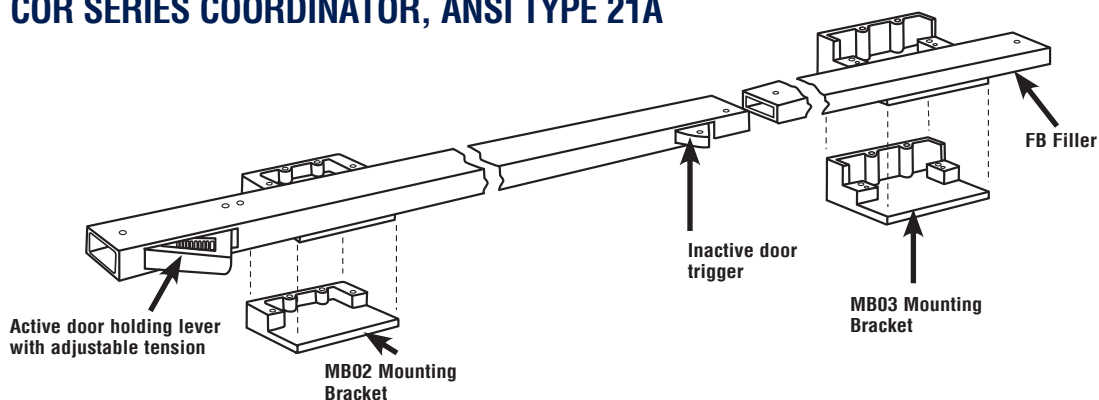
HOW TO SELECT THE RIGHT SIZE COORDINATOR

Coordinator size and length is a function of the active door size.
It is recommended the coordinator extend a min of 6" beyond
the active door width.

EXAMPLES:

- 1 — Active door = 48", inactive door with astragal = 36" Coordinator size = 48 + 6 = 54" = COORD60
- 2 — Active door = 36", inactive door with astragal = 24" Coordinator size = 42 + 6 = 48" = COORD52
- 3 — Active door = 36", inactive door with astragal = 36" Coordinator size = 36 + 6 = 42" = COORD42

COR SERIES COORDINATOR, ANSI TYPE 21A



HOW TO ORDER

| FINISH | | | |
|---|--|--|-----|
| | | 600 — USP PRIMER | |
| COORD72 | | MB02 | 600 |
| COORD54 — FOR DOOR WIDTHS FROM 48" - 54" COORD60 — FOR DOOR WIDTHS FROM 55" - 60" COORD72 — FOR DOOR WIDTHS FROM 61" - 72" COORD96 — FOR DOOR WIDTHS FROM 73 - 96" | | MB02 MOUNTING BRACKET - SOFFIT OVER 2-1/4" MB03 MOUNTING BRACKET - SOFFIT 7/8" - 2-1/4" | |
| SERIES | | MOUNTING BRACKET OPTION¹ | |

Ordering Example Door Opening Width: 72", Soffit width: 7/8": Order COORD72 MB03 600

- Denotes factory default
 Notes: 1 - Includes 2ea Mounting Brackets.

FB SERIES FILLER

SPECIFICATIONS:

- BASE MATERIAL:** • Steel
- FINISHES:** • 2 Ea. 12-24 x 1-1/4" PH PH MS
- DESIGNATOR** • FB18 — 18"
- SIZE:** • FB20 — 20"
 • FB42 — 42"
- For lengths greater than 42" contact PDQ Technical Service.



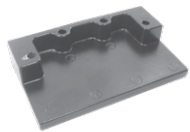
MB SERIES MOUNTING BRACKET

FEATURES:

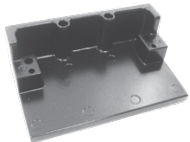
- Required for soffit installations
- Prevents damage to the Coordinator by installation fasteners

SPECIFICATIONS:

- BASE MATERIAL:** • Aluminum
- FASTENERS:** • MB02: 4 Ea. 10-24 x 1-1/2" FH PH MS.
 • MB03: 4 Ea. 10-24 x 2" FH PH MS, 2 Ea. 8-32 x 1-1/2" FH PH MS
- FINISHES:** • 600 (USP) Primer



MB02



MB03

| NO. | SOFFIT SIZE |
|------|---------------|
| MB02 | OVER 2-1/4" |
| MB03 | 7/8" - 2-1/4" |

93590/93591 SERIES DOOR GRAVITY COORDINATOR, ANSI TYPE 21B

FEATURES:

- When active door is open, coordinator prevents the active door from closing until inactive door closes first. Closing the inactive door causes strike plate on top of door to contact cam and lift arm, allowing the active door to close. As inactive door continues closing, the roller travels over strike plate on, holding the arm above active door
- Non-handed. Field reversible
- Prevents the active door from closing until the inactive door is closed.
- 93590 Series: 6-1/2" Projection. For use on a pair of doors.
 - With astragal on the active door up to 4'.
 - With astragal, inactive door up to 3' 4".
 - With astragals, both doors up to 2' 10".
- 93591 Series: 8-1/2" Projection. For use on a pair of doors
 - With astragal on the active door over 4'.
 - With astragal, inactive door over 3' 4".
 - With astragals, both doors up to 2' 10".



SPECIFICATIONS:

- BASE MATERIAL:** • Cast brass
- FASTENERS:** • Body: 2 ea. #10 x 1" FH SMS, 2 ea. #10 - 24 x 1" FH MS. Strike: 5 ea. #8 x 1" FH SMS.
- FINISHES:** • 626 (US26D) Satin Chrome
- CERTIFICATIONS, LISTINGS, COMPLIANCES:**
- UL/CUL 10B and UL/CUL10C listed for 3 hours for use with a pair of swing doors incorporating astragal
 - Complies with ANSI/BHMA156.3 Type 21B
 - Meets requirements of Buy American Act

| MODEL | FINISH | PROJECTION |
|-------|--------------------|------------|
| 53590 | 626 - SATIN CHROME | 6-1/2" |
| 53591 | 626 - SATIN CHROME | 8-1/2" |

Ordering example: 53590 626

910 SERIES CARRY BAR

FEATURES:

- Required for soffit installations used when the inactive door is opened before the active door

SPECIFICATIONS:

- BASE MATERIAL:** • Brass, steel
- FASTENERS:** • 2 ea. 1/4 - 20 x 3/4" RH MS, 2 ea. 1/4 - 20 x 1-11/16" sex bolts (Included).
- FINISHES:** • 689 Aluminum Painted, 693 Black Painted



| MODEL | FINISH | BASE SIZE |
|-------|----------------|-----------------|
| 910 | 689 - ALUMINUM | 1-3/4" X 2-1/4" |
| 910 | 693 - BLACK | 1-3/4" X 2-1/4" |

Ordering example: 910 689

CROSS REFERENCE

| PDQ | DESCRIPTION | ABH | DCI | HAGER | IVES | ROCKWOOD | TRIMCO |
|----------|---------------------|------|-------|-------|----------|----------|--------|
| COR42 | Coordinator | 3710 | N6 | 297D | COR32 | 2660 | 3094A2 |
| COR52 | Coordinator | 3720 | 6 | 297D | COR42/52 | 2672 | 3094B1 |
| COR60 | Coordinator | 3730 | L-6 | 297D | COR60/72 | 2696 | 3094C4 |
| MB03 | Mounting Bracket | 3751 | 601AB | 297M | MB-2 | 1601AB | 3095 |
| MB02 | Mounting Bracket | 3752 | 601C | 297N | MB-1 | 1601C | 3096 |
| 910 | Carry Bar | 3760 | 100 | 297C | CB1 | 1100 | 3090 |
| 93590/91 | Gravity Coordinator | 3790 | 500 | 298D | COR7G/9G | 576 | 3093 |

FINISHES

ARCHITECTURAL



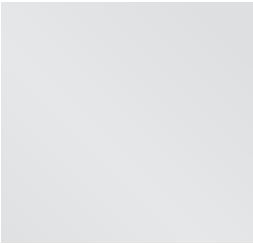
605 (US3)
Bright Brass, Clear Coated



613 (US10B)
Oil Rubbed Bronze,
Oxidized Satin Bronze,
Oil Rubbed, No Coating

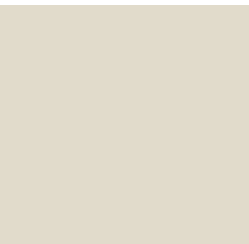


626 (US26D)
Satin Chromium Plated,
No Coating



630 (US32D)
Satin Stainless Steel,
No Coating

PAINTED



600 (USP)
Primed for Painting



689 (US28)
Aluminum



693 Black

Finishes shown are representative only. Not all products are available in all finishes listed.

NOTES:

WHEN TIME EQUALS MONEY

PDQ'S *PRIORITY QUICKSHIP* DELIVERS

AUBURN, WA

SALT LAKE CITY, UT

KANSAS CITY, MO

2754 CREEK HILL ROAD
LEOLA, PA 17540

Our Four Distribution Centers are ideally located to provide quick delivery throughout the entire United States. Priority Quickship items will ship same day or next day after the order is received. Contact your sales representative or PDQ Customer Service for more information.



Headquarters: 2754 Creek Hill Road • Leola, PA 17540 • 800.441.9692 • 717.656.6892 Fax
Regional Distribution Centers: Kansas City, MO, Salt Lake City, UT, Seattle, WA
www.pdqlocks.com

PDQ'S Flush Bolts Brochures are now printed entirely on Forest Stewardship Council™ certified paper. FSC Certification ensures that the paper used in this catalog contains fiber from well-managed and responsibly harvested forests that meet strict environmental and socioeconomic standards. We're proud to be one of the first hardware manufacturers in the country to make this significant move to help our environment. The FSC logo on our brochure signals not only FSC Certification, but also PDQ's commitment to improving the environment.



Mixed Sources

Product group from well-managed forests and other controlled sources
www.fsc.org Cert no. SW-COC-002931
© 1996 Forest Stewardship Council