

Architectural Door Accessories

ASSA ABLOY

PemkoHinge® Continuous Geared Hinges: Full-Surface Hinges: Balanced Pivot

The global leader in
door opening solutions

_FS_BP



LISTED
DOOR HINGE
76Y2



AVAILABLE FINISHES: **BL**, **C**, **D**, **G**, **PW**, **SN**

WIDTH: **2" (50.8 mm)**

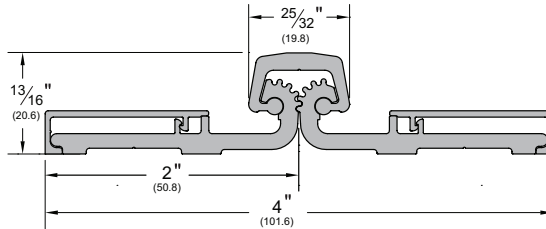
WIDTH: **4" (101.6 mm)**

(total width of hinge)

CAP WIDTH: **25/32" (19.8 mm)**

HEIGHT: **13/16" (20.637 mm)**

(total height of hinge)



BL (Black Anodized) - special request only

C (Clear Anodized)

D (Dark Bronze Anodized)

G (Gold Anodized)

PW (Painted White) - special request only

SN (Satin Nickel Anodized)

TITLE:

PREPARED FOR:

PREPARED BY:

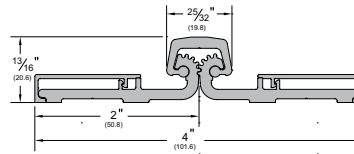
DATE:

COMMENTS:

FS_BP_

PemkoHinge®

Example: C | FS | 83 | BP | -HD1
 Finish Profile# Length Balanced Pivot Heavy Duty



- TYPE:** Full Surface Balanced Pivot
- MATERIAL:** 6063-T6 Aluminum Alloy and Temper Retainer
- FINISH:** C (Clear Anodized Aluminum), D (Dark Bronze Anodized Aluminum)
- WIDTH:** 4" (101.6 mm)
- HEIGHT:** 13/16" (20.637 mm)
- WEIGHT:** 8 lbs.

Product Test Ratings:



**BHMA
CERTIFIED**



**LISTED
DOOR HINGE
76Y2**

See Product Testing
section for more
information.

- LEAD TIME:** 4 working days (or less).
- AVAILABLE:** Ships from Memphis, TN and Ventura, CA locations.
- WARRANTY:** 5 Years from purchase date
- CROSS REFERENCE:** Hager, 780-057HD; ABH, A571HD

INSTRUCTIONS, CAD DRAWINGS, PROFILE DRAWINGS and CUT SHEET
 Available upon request and on website

PRODUCT TESTING:

- **Fire Rated** – Tested to UL10B Standard Fire Tests and UL10C Positive Pressure Fire Tests of Door Assemblies
- **BHMA Certified** – Tested for performance with regards to the requirements in:
 - ANSI/BHMA A156.26 – Continuous Hinges

MATERIAL SAFETY / FIRE HAZARDS

Per OSHA Regulations (Standards – 29 CFR) this Pemko item is considered an “article” as described in section 1910.1200 paragraph (c), meaning that it is a manufactured item other than a fluid and is not a hazard. To help our customers we are providing additional information in this section to cover relevant topics found on Safety Data Sheets (SDS) but not found elsewhere in this document.

FIRE HAZARD:

Aluminum alloy is a non-combustible material. Solid aluminum does not present a fire hazard.

FIRST AID MEASURES

Under normal conditions this item presents no small parts and so this item cannot be inhaled or swallowed and has no adverse reaction when coming in contact with skin. Observe good industrial hygiene after installation.

Note to physician: treat symptomatically and supportively

FIREFIGHTING MEASURES

As in any fire, prevent human exposure to fire, smoke, fumes, or products of combustion. Evacuate non-essential personnel from the fire area. Firefighters should wear face mask with self-contained breathing apparatus (SCBA) and impervious protective clothing. In case of aluminum fire, use class D dry powder to extinguish. DO NOT USE water or halogenated extinguishing media.

- Hazardous combustion products: none.

SPILL PROCEDURES

Sweep up any off-cuts from product and store in a suitable container for disposal

HANDLING, STORAGE, AND DISPOSAL

There are no specific handling instructions. Always store at room temperature and keep away from heat sources. When disposing, if possible, recycle the item and its packaging. Otherwise disposal should be in accordance with local, state, or federal legislation. Bury in an authorized landfill site or incinerate under approved controlled conditions.

EFFECTS OF EXPOSURE

There are no effects under normal conditions of use. Observe good industrial hygiene.

TOXICITY

There is no toxicity hazard under normal conditions of use

HEALTH HAZARD

This product may contain hazardous ingredients; harmful effects are unlikely under normal conditions.

CARE AND MAINTENANCE

CLEANING

Pemko's aluminum products and solid gasket products can be cleaned with a mild soap with warm water. A clean non-abrasive cloth should be used to clean the surface of these products. For removing grease, sealant, or other minimal adhesives a mild solvent such as mineral spirits may be used; then clean with mild soap mixed with warm water. To dry, either allow to air dry or wipe dry with a chamois, squeegee, or lint-free cloth.

For sponge gasket and weatherstrip products, wipe with a damp cloth. Do not use mineral spirits or other chemical as this may cause the plastic to "melt" or deteriorate. To dry, either allow to air dry or wipe dry with a chamois, squeegee, or lint-free cloth.

The use of strong solvents or cleaner concentrations may cause damage to the finish surface and isn't recommended.

MAINTENANCE

Pemko products are generally low-maintenance and require nothing more than general cleaning. Should anything outside of "general cleaning" arise, please consult Pemko Customer Service.

If you have any questions, or if you have a situation outside this scope, please contact Pemko Customer Service.

INSTALLATION INSTRUCTIONS:

Full Surface Balance Pivot Hinges are designed mainly for retrofit work, where door to frame applications exist, or new construction where door to door application is desired. See figure A and B for clearances.

1. a. For Door to Frame Installation
Open the PemkoHinge leaves and position one leaf on the face of the frame. Allow 1/8" clearance between the top of the hinge and the frame header.
- b. For Door to Door Installation
Open the PemkoHinge leaves and position one leaf on the face of the door. Align flush with the top of the door.

Skip Steps 2-3 for Door to Door Installation

2. Mark the top 7/32 hole and install one of the (12) #12-24 x 3/4 self drilling tek screws. Once the top screw is installed, level hinge and install the remaining (5) #12-24 tek screws. In the 4 remaining 5/16" holes, drill a .201 (No. 7) hole. Using the T-27 Torx bit provided, install the (4) 1/4-20 x 5/8 self tapping Torx screws.
3. Position the door in the opening; shim to adjust for proper clearance (See Figures A and B).
4. Install the six (6) #12-24 x 3/4" self drill/tapping screws in the six (6) 7/32" holes located in the door leaf portion of the hinge.
5. Remove shims and open the door. Check for proper swing and clearances. Adjust if required.
6. Close the door. Mark the centers of the remaining holes. Drill holes all the way through the door using a 1/4" diameter drill.
7. Open the door. Enlarge the 1/4" holes on the inside face of the door using a 3/8" dia. drill. Finish attaching door leaf portion of PemkoHinge to the face of the door using the four (4) thru-bolts and shoulder bolts. Thru-bolts attach from inside face; shoulder bolts attach from the outside of face.
8. Repeat Steps 4-7 for Door to Door Installation only
9. To complete the installation, first secure the frame leaf snap cover using a rubber mallet, starting at the top and working down to the bottom. Install the door leaf cover by first hooking the edge away from the gears and then secure the cover on with a rubber mallet. Adjust so top of covers are flush with top of hinge.

OPTION: Firepins are required on 3 hour (A-Label) assemblies. (See reverse side for instructions).

SHORTENING THE HINGE:

If the hinge must be shortened, cut the bottom only using a chop saw. This will allow metal chips to work out after the installation. Although it is not handed, the hinge becomes handed after cutting and the cut edge must be installed at the bottom of the opening.

DRILL SIZE CHART:

MATERIAL	THICKNESS	DRILL SIZE
Aluminum	.090 - .140	13
Metal	20 gauge	17
Metal	16-18 gauge	15
Metal	12-14 gauge	13
Wood	N/A	5/32"

FIGURE A

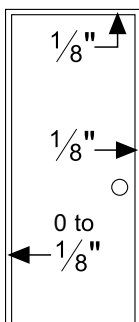
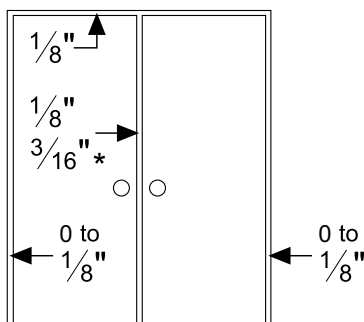


FIGURE B

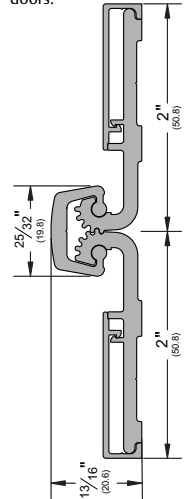


* Allow extra clearance as required per astragal manufacturer. Certain door and frame conditions may require an extra 1/32"-1/16" clearance. Excessive clearance on fire rated assemblies may violate the requirements of NFPA 80.

PEMKOHINGE™
Continuous Geared Hinge

Grade 1 Heavy Duty Full Surface Balance Pivot 3" Between Bearing Centers

- Tested and certified with the best warranty in the industry.
- No restrictions on frame gauge and wall conditions.
- No restriction on cutting hinges in field.
- No special cutting instructions or voided warranties.
- No special door and frame preps up to and including 90 minute doors.



Contains: 1 Door Hinge

Product / Finish

CFS__BP-HD1

Clear Anodized Aluminum

Testing/Ratings



LISTED
Door Hinges
76Y2

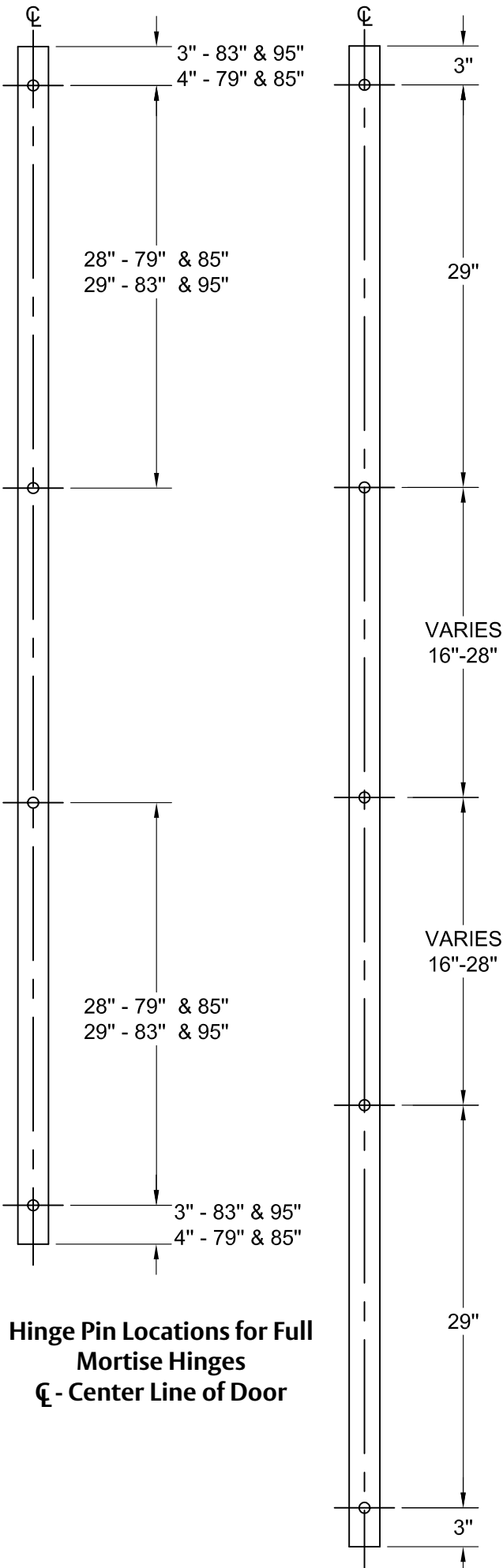
Aluminum continuous hinge for use on swinging type fire doors of the hollow metal, tin-clad, sheet metal and steel covered composite type rated up to 3 hours, wood covered composite type rated up to and including 1-1/2 hours. Also wood core rated up to and including 20 minutes without hose stream. Meet criteria of UBC 7.2 for positive pressure.

Tools Required



www.pemko.com

FIRE PINS ARE REQUIRED ON 3 HOUR RATED DOORS ONLY



Hinge Pin Locations for Full Mortise Hinges
CL - Center Line of Door

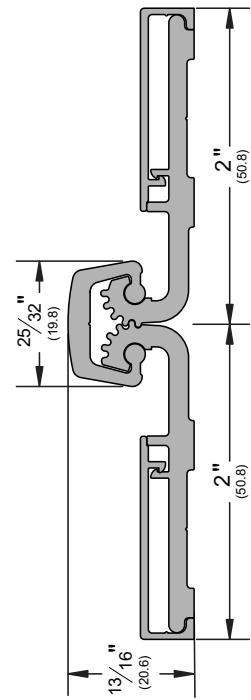
PIN INSTALLATION:

Full Surface (Balance Pivot) Hinge:

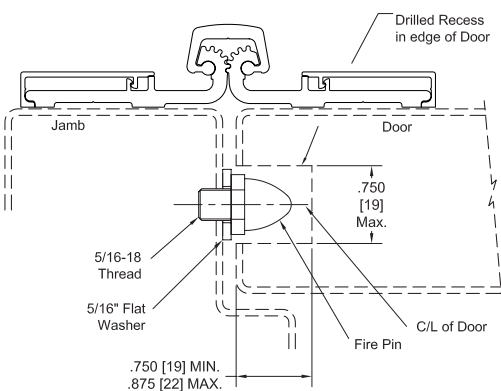
Install hinge on door and frame prior to locating pins.

1. Drill and tap for 5/16-18 threads in frame as indicated on the template or the drilled frame leaf of the hinge. Insert firepin in threaded hole.
2. Drill 3/4" hole 3/4" to 7/8" deep in edge of door where indicated on the template or the drilled door leaf of the hinge.

PEMKO FIREPIN



Actual Size



ASSA ABLOY

ASSA ABLOY, the global leader in door opening solutions

UNITED STATES:

MEMPHIS, TN
 Ph: 800.824.3018
 Fax: 800.243.3656

VENTURA, CA
 Ph: 800.283.9988
 Fax: 800.283.4050

CANADA:

VANCOUVER, BC
 Ph: 877.535.7888
 Fax: 877.535.7444

TORONTO, ON
 Ph: 866.243.9816
 Fax: 866.243.9817